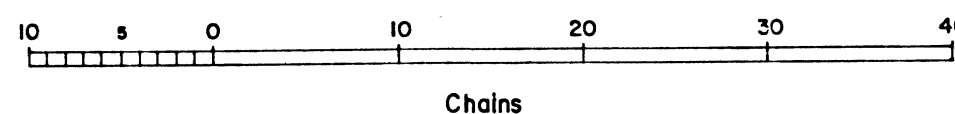
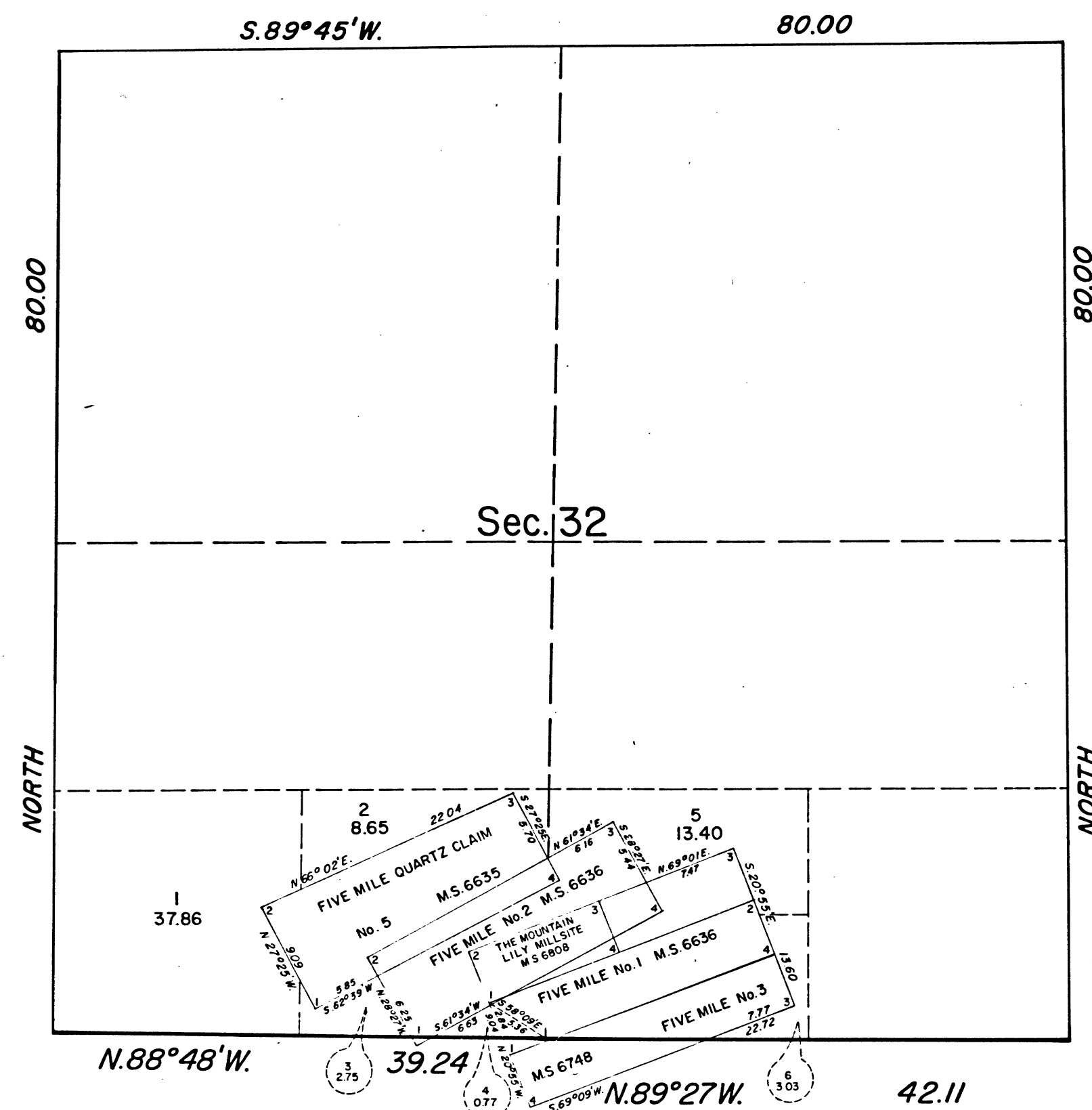
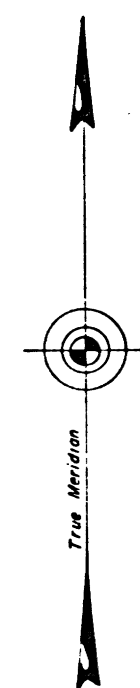


TOWNSHIP 3 NORTH, RANGE 15 EAST, OF THE MOUNT DIABLO MERIDIAN, CALIFORNIA.

SUPPLEMENTAL PLAT OF SECTION 32



This supplemental plat of Section 32, T. 3 N., R. 15 E., Mount Diablo Meridian, California, showing new lottings in the SE $\frac{1}{4}$ and SW $\frac{1}{4}$, is based upon the township plat approved February 7, 1881, the township plat for T. 2 N., R. 15 E., accepted April 2, 1935, and the approved mineral survey records.

UNITED STATES DEPARTMENT OF THE INTERIOR
BUREAU OF LAND MANAGEMENT
Washington, D.C. July 31, 1975

This plat, showing amended lottings, is based upon the official records and, having been correctly prepared in accordance with the regulations of this Bureau, is hereby accepted.

For the Director

Bernard W. Halpern
Chief, Division of Cadastral Survey