

TRACT 5814

BK. 179 OF MAPS AT PAGES 44-47

PARCEL MAP 6156

CITY OF HAYWARD
COUNTY OF ALAMEDA, STATE OF CALIFORNIA

SCALE: 1" = 20' OCT. 1993

Brian Kangas Foulk

CONSULTING ENGINEERS * PLANNERS * SURVEYORS
HAYWARD, CALIFORNIA

BASIS OF BEARINGS

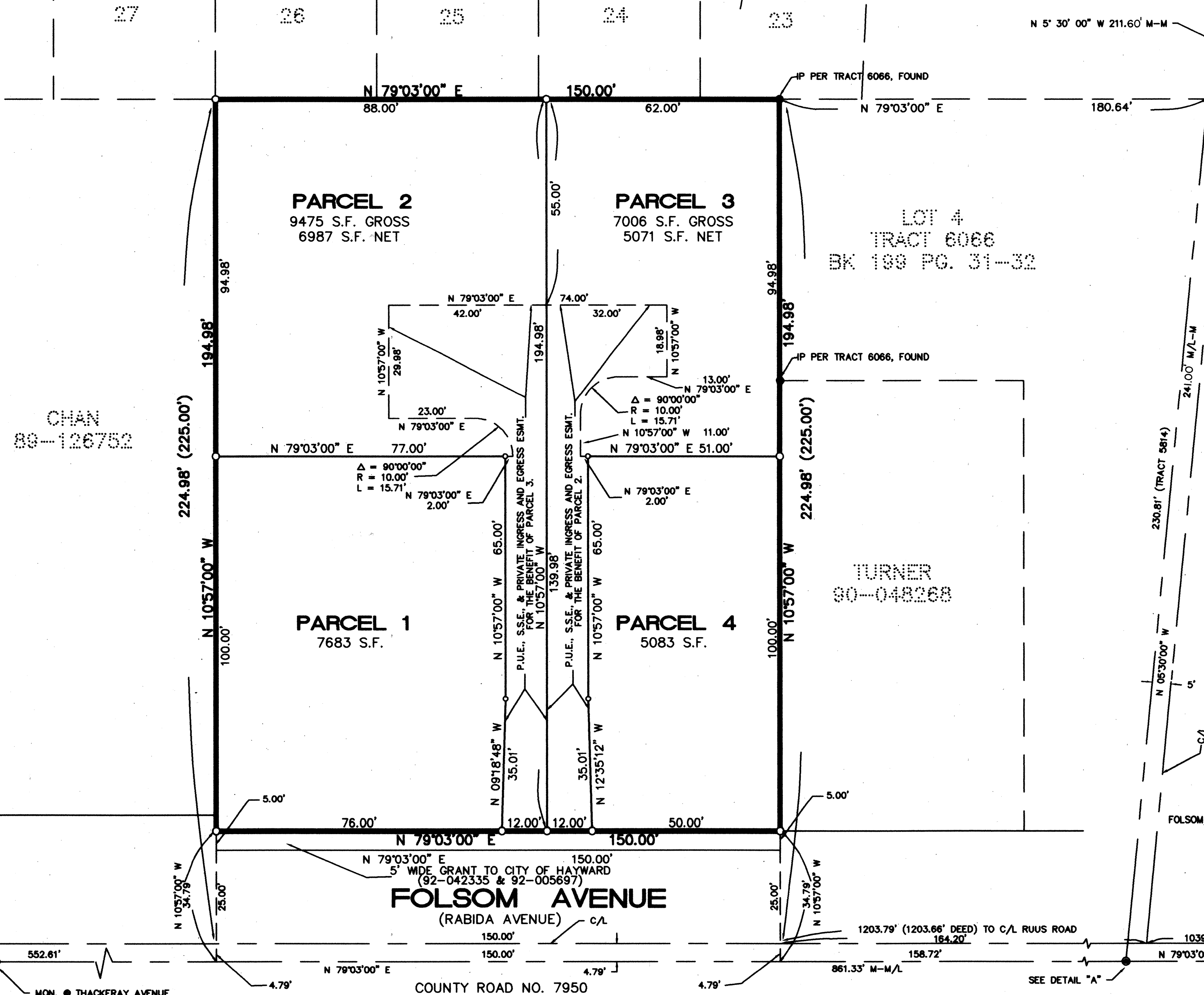
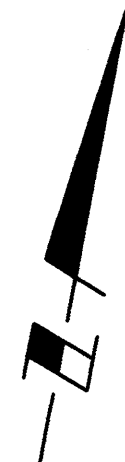
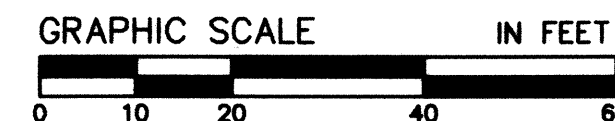
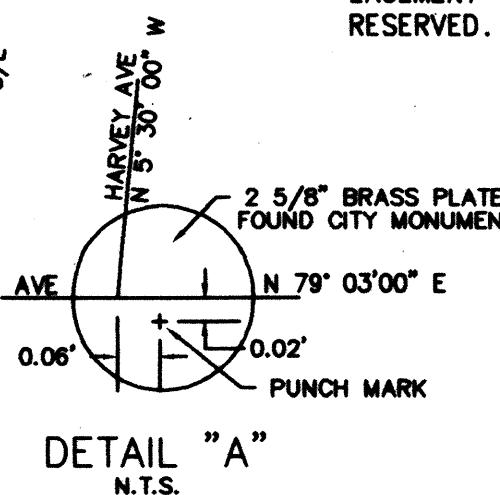
THE BEARING N 79° 03' 00" E OF THE MONUMENT LINE OF FOLSOM AVENUE (FORMERLY RABIDA AVENUE) AS SHOWN ON "PARCEL MAP 5875, CITY OF HAYWARD, COUNTY OF ALAMEDA, STATE OF CALIFORNIA" FILED IN BOOK 194 OF PARCEL MAPS, AT PAGES 99 AND 100, ALAMEDA COUNTY RECORDS.

LEGEND

—	EXTERIOR BOUNDARY
---	MONUMENT LINE
---	CENTER LINE
---	EASEMENT LINE
M-M	MONUMENT TO MONUMENT
M-M/L	MONUMENT TO MONUMENT LINE
●	FOUND CITY MONUMENT
○	SET 1" IRON PIPE, TAGGED RCE 25392
ESMT.	EASEMENT
P.U.E.	PUBLIC UTILITY EASEMENT
S.S.E.	SANITARY SEWER EASEMENT
C/L	CENTER LINE
()	RECORD DATA

NOTE

WHEN TITLE TO PARCEL 2 OR PARCEL 3 PASSES, RECIPROCAL EASEMENTS FOR P.U.E. (PUBLIC UTILITY EASEMENT), S.S.E. (SANITARY SEWER EASEMENT) AND PRIVATE INGRESS AND EGRESS EASEMENT AS INDICATED HEREON, SHALL BE GRANTED AND RESERVED.



HARVEY AVENUE

FOLSOM AVENUE
(RABIDA AVENUE)

BKF JOB No. 917054-50

SHEET 2 OF 2

BK 221 Pg 28