

# FRANKE

## PLK HOODS 4' & 12'

FRANKE FOODSERVICE SYSTEMS AMERICAS, INC.

800 AVIATION PARKWAY  
SMYRNA, TN USA 37167

PHONE: 1-800-877-5178  
WWW.FRANKESUPPLY.COM  
FS-BKSALES.US@FRANKE.COM

HOOD INFORMATION - JOB PLK PHOTO														
HOOD NO	TAG	MODEL	LENGTH	MAX. COOKING TEMP.	TYPE	APPLIANCE DUTY	DESIGN CFM/FT	TOTAL CFM	EXHAUST SYSTEM	HOOD CONSTRUCTION	END	HOW	WHERE EXPOSED	WHERE EXPOSED
1	3347	FR-BD-2	11' 10"	450 DEG	1	MEDIUM	166	1664	4" 14" 1964 1837 -1.142"	430 SS	ALONE	ALONE	WHERE EXPOSED	WHERE EXPOSED
2	3344	FR-BD-2	4' 0"	450 DEG	1	MEDIUM	150	600	4" 6" 800 1719 -0.568"	430 SS	ALONE	ALONE	WHERE EXPOSED	WHERE EXPOSED

HOOD INFORMATION														
HOOD NO	TAG	TYPE	QTY	HEIGHT	LENGTH	EFFICIENCY %	7	QTY	TYPE	WIRE GAUGE	LOCATION	SIZE	TYPE	SIZE
1		HIGH EFFICIENCY	8	14"	16"	>70%	0							
2		HIGH EFFICIENCY	2	14"	20"	>70%	0							

**GREASE DUCT & CHIMNEY SPECIFICATIONS:**  
PROVIDE GREASE DUCT EQUAL TO FRANKE FOODSERVICE SYSTEMS MODEL "FRDW" ROUND 20 GAUGE 430 STAINLESS STEEL DUCTWORK. MODEL "FRDW" IS LISTED TO UL-1978 AND IS INSTALLED USING "N" CLAMP LOCKING CONNECTIONS SEALED WITH 3M FIRE BARRIER 2000 PLUS. MODEL "FRDW" DOES NOT REQUIRE WELDING PROVIDING IT HAS BEEN INSTALLED PER THE MANUFACTURES INSTALLATION GUIDE.  
PROVIDE RATED ACCESS DOORS AT EVERY CHANGE IN DIRECTION AND EVERY 12' ON CENTER. PER MANUFACTURES LISTING MODEL "DW" HORIZONTAL RUNS LESS THAN 75 FT. CAN BE SLOPED 1/16" PER 12", HORIZONTAL RUNS MORE THAN 75 FT. CAN BE SLOPED 3/16" PER 12". DUCT SHOULD BE SLOPED AS MUCH AS POSSIBLE TO REDUCE THE CHANCE OF GREASE ACCUMULATION IN HORIZONTAL RUNS.

IF THE DUCT OR CHIMNEY IS WITHIN 18 INCHES OF COMBUSTIBLE MATERIAL, PROVIDE UL-2221 OR UL-103 HT LISTED DOUBLE WALL GREASE DUCT OR DOUBLE WALL CHIMNEY EQUAL TO FRANKE FOODSERVICE SYSTEMS MODEL "FRDW- 2R, 2R TYPE HT, 3R, OR 3Z" ROUND 20 GAUGE 430 STAINLESS INNER DUCT INSULATED WITH A 24 GAUGE 430 STAINLESS OUTER SHELL.

FRANKE FOODSERVICE SYSTEMS RECOMMENDS THE USE OF LISTED, PRE-FABRICATED ROUND GREASE EXHAUST DUCT TO REDUCE STATIC PRESSURE IN THE SYSTEM, MINIMIZE INSTALLATION AND INSPECTION TIMES, AND ENSURE DUCT IS LIQUID TIGHT

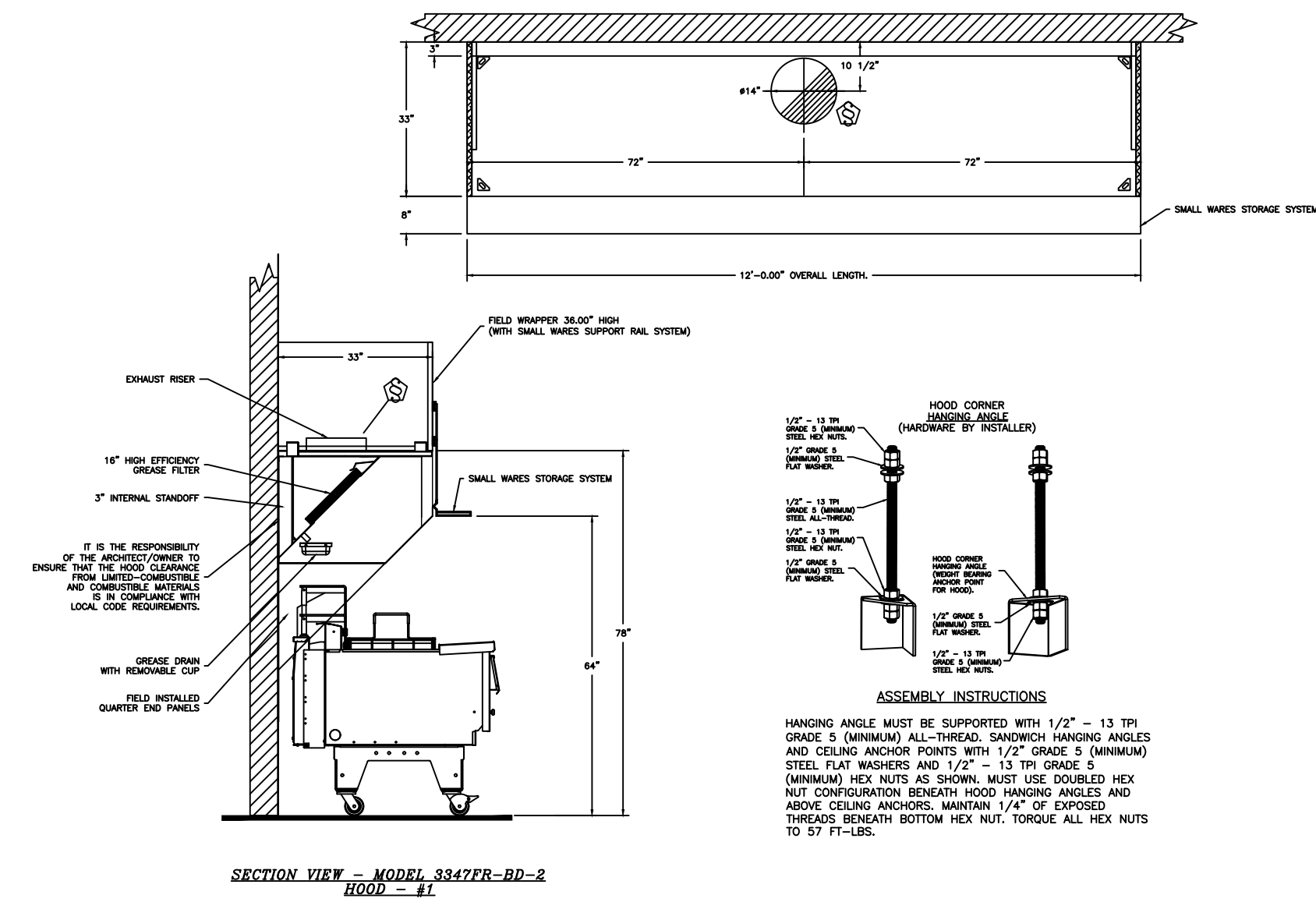
VERIFY CEILING HEIGHT

EXHAUST HOOD DATA  
SCALE: NO SCALE

**HVAC DISTRIBUTION NOTE**  
HIGH VELOCITY DIFFUSERS OR HVAC RETURNS SHOULD NOT BE PLACED WITHIN TEN (10) FEET OF THE EXHAUST HOOD. PERFORATED DIFFUSERS ARE RECOMMENDED.

CUSTOMER APPROVAL TO MANUFACTURE:

APPROVED AS NOTED  
APPROVED WITH AN EXCEPTION TAKEN  
REVISE AND RESUBMIT  
SIGNATURE \_\_\_\_\_ DATE \_\_\_\_\_



CHICKEN HOOD DETAIL  
SCALE: NO SCALE

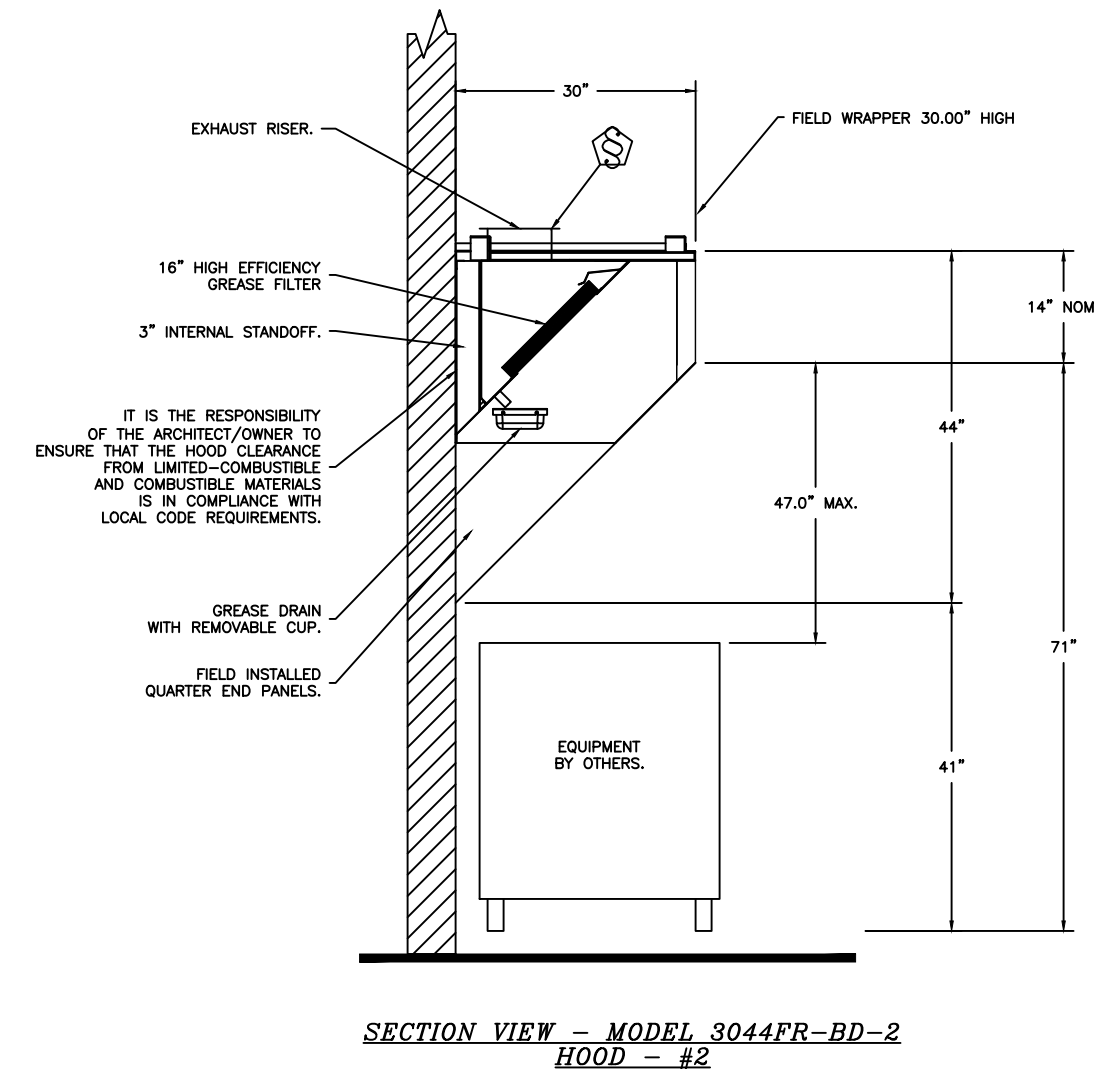
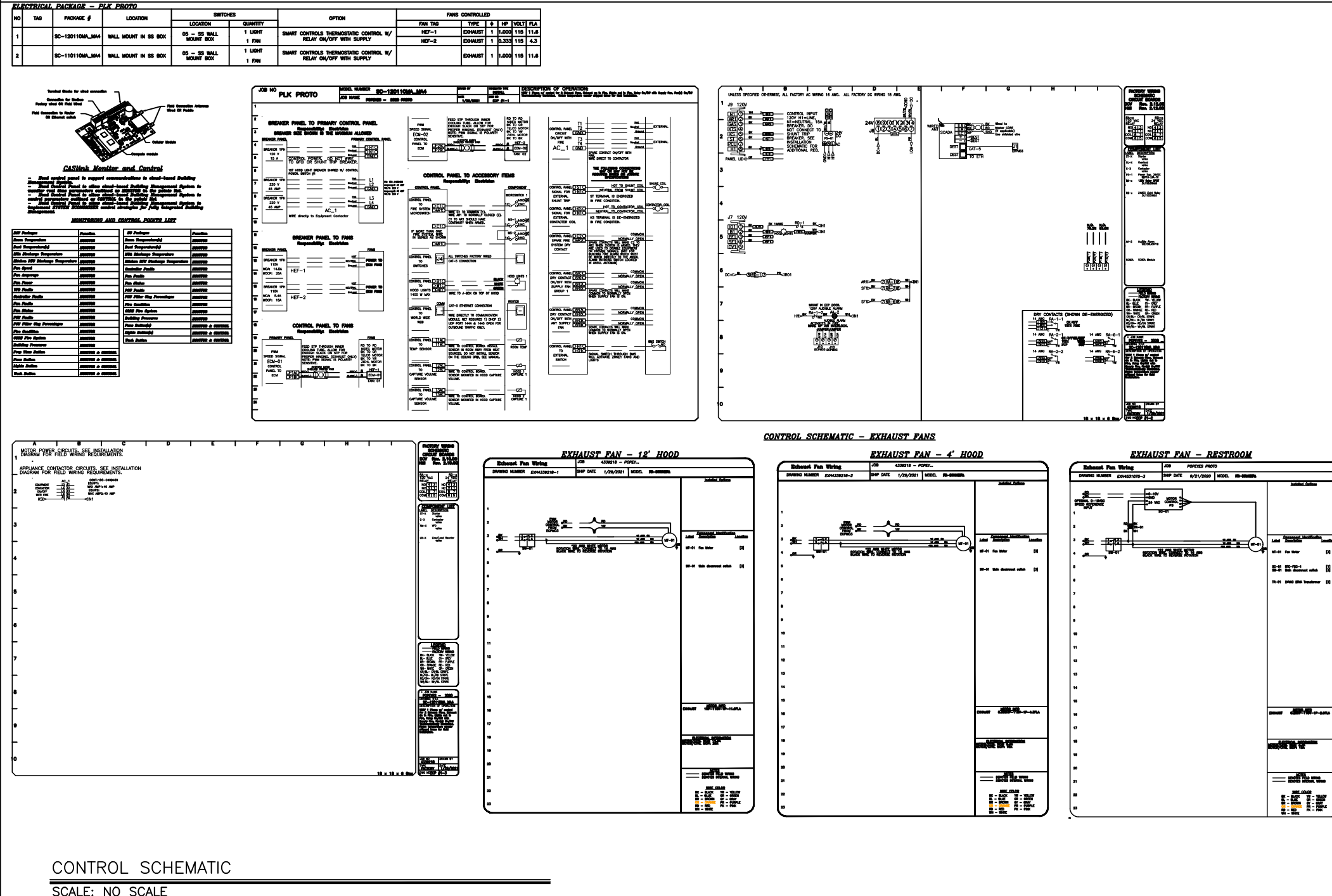
EXHAUST FAN INFORMATION - JOB PLK PHOTO														
FAN UNIT NO	TAG	QTY	FAN UNIT MODEL #	CFM	ESP	RPM	MOTOR END	HP	BHP	#	VOLT	FLA	DISCHARGE VELOCITY	WEIGHT (LBS)
1	EF-1	1	FR-DUBDHA	1964	1.250	1486	TEAD-ECM 1.000	0.8320	1	115	11.6	622 FPM	98	18.4
2	EF-2	1	FR-DUBDHA	800	0.800	1408	TEAD-ECM 0.333	0.1900	1	115	4.3	297 FPM	75	13.2

FAN UNIT NO	TAG	QTY	DESCRIPTION
1	EF-1	1	1 GREASE BOX 1 EXHAUST FAN HEAT Baffle 1 FAN BASE CERAMIC SEAL - SHIP LOOSE - FOR GREASE DUCTS 1 ECM WIRING PACKAGE - FAN SIGNAL FROM ECM03 PREWIRE (TELLO MOTOR) 1 COW ROTATION 1 GREASE BOX 1 EXHAUST FAN HEAT Baffle 1 FAN BASE CERAMIC SEAL - SHIP LOOSE - FOR GREASE DUCTS 1 ECM WIRING PACKAGE - FAN SIGNAL FROM ECM03 PREWIRE (TELLO MOTOR) 1 COW ROTATION
2	EF-2	1	1 GREASE BOX 1 EXHAUST FAN HEAT Baffle 1 FAN BASE CERAMIC SEAL - SHIP LOOSE - FOR GREASE DUCTS 1 ECM WIRING PACKAGE - FAN SIGNAL FROM ECM03 PREWIRE (TELLO MOTOR) 1 COW ROTATION

FAN UNIT NO	TAG	EXHAUST GREASE CLIP	WALL DAMPER	SIDE DISCHARGE	SUPPLY GRAVITY DAMPER	MOTORIZED DAMPER	WALL MOUNT
1	EF-1	YES					
2	EF-2	YES					

NO	ON	TAG	WEIGHT	ITEM	SIZE
1	# 1	HEF-1	36 LBS	CURB	23.000" W X 23.000" H X 20.000" H VENTED HINGED.
2	# 2	HEF-2	34 LBS	CURB	19.500" W X 19.500" H X 24.000" H VENTED HINGED.

HOOD EXHAUST FAN DATA  
SCALE: NO SCALE



FRYER HOOD DETAIL  
SCALE: NO SCALE

EXHAUST FAN INFORMATION - JOB PLK PHOTO														
FAN UNIT NO	TAG	QTY	FAN UNIT MODEL #	CFM	ESP	RPM	MOTOR END	HP	BHP	#	VOLT	FLA	DISCHARGE VELOCITY	WEIGHT (LBS)
1	EF-3	1	FR-DUBDHA	150	0.375	1042	TEAD-ECM 0.250	0.0400	1	115	2.9		49	4.4

FAN UNIT NO	TAG	QTY	DESCRIPTION
1	EF-3	1	1 1/2\"/>

NO	ON	TAG	WEIGHT	ITEM	SIZE
1	# 1	HEF-1	36 LBS	CURB	23.000" W X 23.000" H X 20.000" H VENTED HINGED.
2	# 2	HEF-2	34 LBS	CURB	19.500" W X 19.500" H X 24.000" H VENTED HINGED.

NO	ON	TAG	WEIGHT	ITEM	SIZE
1	# 1	HEF-1	36 LBS	CURB	23.000" W X 23.000" H X 20.000" H VENTED HINGED.
2	# 2	HEF-2	34 LBS	CURB	19.500" W X 19.500" H X 24.000" H VENTED HINGED.

NO	ON	TAG	WEIGHT	ITEM	SIZE
1	# 1	HEF-1	36 LBS	CURB	23.000" W X 23.000" H X 20.000" H VENTED HINGED.
2	# 2	HEF-2	34 LBS	CURB	19.500" W X 19.500" H X 24.000" H VENTED HINGED.

NO	ON	TAG	WEIGHT	ITEM	SIZE
1	# 1	HEF-1	36 LBS	CURB	23.000" W X 23.000" H X 20.000" H VENTED HINGED.
2	# 2	HEF-2	34 LBS	CURB	19.500" W X 19.500" H X 24.000" H VENTED HINGED.

NO	ON	TAG	WEIGHT	ITEM	SIZE
1	# 1	HEF-1	36 LBS	CURB	23.000" W X 23.000" H X 20.000" H VENTED HINGED.
2	# 2	HEF-2	34 LBS	CURB	19.500" W X 19.500" H X 24.000" H VENTED HINGED.

NO	ON	TAG	WEIGHT	ITEM	SIZE
1	# 1	HEF-1	36 LBS	CURB	23.000" W X 23.000" H X 20.000" H VENTED HINGED.
2	# 2	HEF-2	34 LBS	CURB	19.500" W X 19.500" H X 24.000" H VENTED HINGED.

RESTROOM EXHAUST FAN DATA  
SCALE: NO SCALE

TAG	PART #	CFM	SP	WEIGHT	VELOCITY	QTY	DESCRIPTION
P1	DW435LT	1992	-0.0181	16.34	1863.40	1	SINGLE WALL DUCT 14\"/>

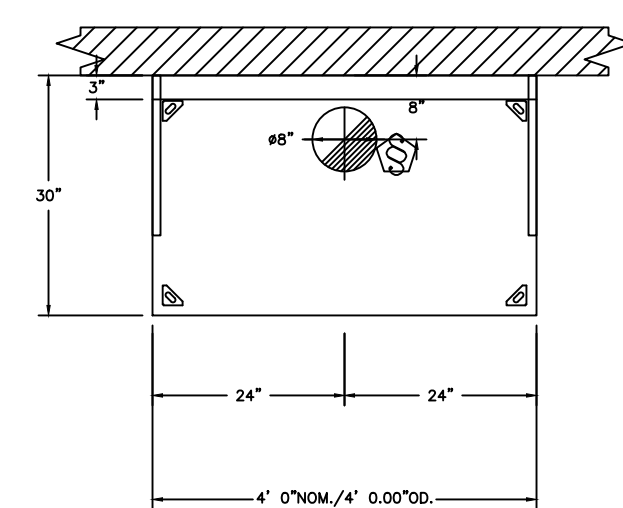
TAG	PART #	CFM	SP	WEIGHT	VELOCITY	QTY	DESCRIPTION
P1	DW435LT	1992	-0.0181	16.34	1863.40	1	SINGLE WALL DUCT 14\"/>

TAG	PART #	CFM	SP	WEIGHT	VELOCITY	QTY	DESCRIPTION
P1	DW435LT	1992	-0.0181	16.34	1863.40	1	SINGLE WALL DUCT 14\"/>

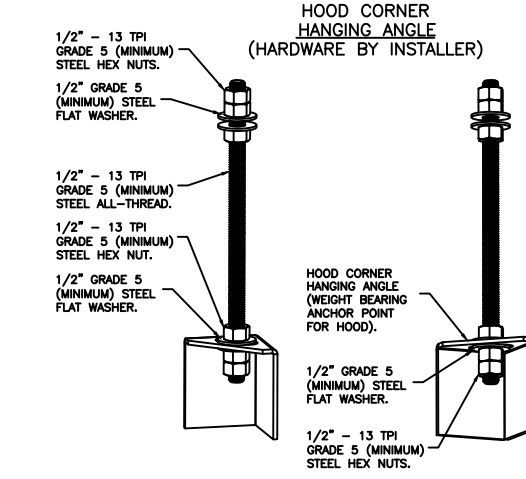
TAG	PART #	CFM	SP	WEIGHT	VELOCITY	QTY	DESCRIPTION
P1	DW435LT	1992	-0.0181	16.34	1863.40	1	SINGLE WALL DUCT 14\"/>

TAG	PART #	CFM	SP	WEIGHT	VELOCITY	QTY	DESCRIPTION
P1	DW435LT	1992	-0.0181	16.34	1863.40	1	SINGLE WALL DUCT 14\"/>

TAG	PART #	CFM	SP	WEIGHT	VELOCITY	QTY	DESCRIPTION
P1	DW435LT	1992	-0.0181	16.34	1863.40	1	SINGLE WALL DUCT 14\"/>



PLAN VIEW - HOOD #2  
4' 0.00\"/>



ASSEMBLY INSTRUCTIONS

HANGING ANGLE MUST BE SUPPORTED WITH 1/2\"/>

FAN UNIT NO	TAG	QTY	DESCRIPTION
1	EF-3	1	1 1/2\"/>

FAN UNIT NO	TAG	QTY	DESCRIPTION
1	EF-3	1	1 1/2\"/>

FAN UNIT NO	TAG	QTY	DESCRIPTION
1	EF-3	1	1 1/2\"/>

FAN UNIT NO	TAG	QTY	DESCRIPTION
1	EF-3	1	1 1/2\"/>

FAN UNIT NO	TAG	QTY	DESCRIPTION
1	EF-3	1	1 1/2\"/>

FAN UNIT NO	TAG	QTY	DESCRIPTION
1	EF-3	1	1 1/2\"/>

FAN UNIT NO	TAG	QTY	DESCRIPTION
1	EF-3	1	1 1/2\"/>

FAN UNIT NO	TAG	QTY	DESCRIPTION
1	EF-3	1	1 1/2\"/>

FAN UNIT NO	TAG	QTY	DESCRIPTION
1	EF-3	1	1 1/2\"/>

FAN UNIT NO	TAG	QTY	DESCRIPTION
1	EF-3	1	1 1/2\"/>

FAN UNIT NO	TAG	QTY	DESCRIPTION
1	EF-3	1	1 1/2\"/>

FAN UNIT NO	TAG	QTY	DESCRIPTION
1	EF-3	1	1 1/2\"/>

FAN UNIT NO	TAG	QTY	DESCRIPTION
1	EF-3	1	1 1/2\"/>

FAN UNIT NO	TAG	QTY	DESCRIPTION
1	EF-3	1	1 1/2\"/>

FAN UNIT NO	TAG	QTY	DESCRIPTION
1	EF-3	1	1 1/2\"/>

FAN UNIT NO	TAG	QTY	DESCRIPTION
1	EF-3	1	1 1/2\"/>

FAN UNIT NO	TAG	QTY	DESCRIPTION
1	EF-3	1	1 1/2\"/>

FAN UNIT NO	TAG	QTY	DESCRIPTION
1	EF-3	1	1 1/2\"/>

FAN UNIT NO	TAG	QTY	DESCRIPTION
1	EF-3	1	1 1/2\"/>

FAN UNIT NO	TAG	QTY	DESCRIPTION
1	EF-3	1	1 1/2\"/>

FAN UNIT NO	TAG	QTY	DESCRIPTION
1	EF-3	1	1 1/2\"/>

FAN UNIT NO	TAG	QTY	DESCRIPTION
1	EF-3	1	1 1/2\"/>

FAN UNIT NO	TAG	QTY	DESCRIPTION
1	EF-3	1	1 1/2\"/>

FAN UNIT NO	TAG	QTY	DESCRIPTION
1	EF-3	1	1 1/2\"/>

FAN UNIT NO	TAG	QTY	DESCRIPTION
1	EF-3	1	1 1/2\"/>

FAN UNIT NO	TAG	QTY	DESCRIPTION
1	EF-3	1	1 1/2\"/>

FAN UNIT NO	TAG	QTY	DESCRIPTION
1	EF-3	1	1 1/2\"/>

POPEYES

LOUISIANA KITCHEN

5505 BLUE LAGOON DRIVE  
MIAMI, FL 33126

THESE DRAWINGS ARE THE PROPERTY OF POPEYES LOUISIANA KITCHEN, INC. AND SHALL NOT BE USED OR REPRODUCED WITHOUT THE EXPRESS WRITTEN PERMISSION FROM THE OWNER.

THESE DOCUMENTS ARE NOT FOR PERMIT OR CONSTRUCTION.

THEY MUST BE COMPLETED AND/OR MODIFIED BY A LICENSED ARCHITECT AND ENGINEER TO CONFORM TO ALL LOCAL, STATE, AND FEDERAL REQUIREMENTS. THERE IS NO WARRANTY, WHETHER IMPLIED OR EXPRESSED, THAT THESE DOCUMENTS MEET THE APPLICABLE CODE REQUIREMENTS. LIABILITY FOR THE DESIGN AND ANY USE OF THE DOCUMENTS IS THE SOLE RESPONSIBILITY OF THE ARCHITECT AND ENGINEER OF RECORD.

POPEYES  
1846 PROTOTYPE  
E.I.F.S./SIMULATED BRICK PANEL  
LOUISIANA KITCHEN PLK DESIGN STANDARDS  
46 SEATS / DUAL-LINE PRODUCTION



POPEYES  
LOUISIANA KITCHEN

REVISIONS

HOOD DETAILS

M3

DATE: 03-02-2021

CHECKED: