

CORNER RECORD

COUNTY OF ~~HYD~~ MONO T. 3N R. 25E M. D. B. MERIDIAN CALIFORNIA
 CORNER TYPE: GOV'T. CORNER ☐ MEANDER ☐ RANCHO ☐ CONTROL ☐ OTHER ☒
 CORNER IDENTIFICATION - DATE OF VISIT NOV. 15, 1988

SEC.
23

Reference Cal Trans R/W Record Map:

Mno 23-I, Sheet 7 of 22, March 1936 (PM 65.11)

CORNER - LEFT AS FOUND ☐ FOUND AND TAGGED ☐ REESTABLISHED OBLITERATED CORNER ☐ REBUILT ☒

PHYSICAL DESCRIPTION OF CORNER FOUND: EVIDENCE AND METHOD USED TO IDENTIFY OR REESTABLISH FOUND 2.5"
ODIP, 0.4' ABOVE GRD., IN 4' ± DIA. SCATTERED ROCK MOUND, 86' ± E. OF
CL MONO 395 AT PM. 65.32, 222' ± SW OF POWER POLE #2307664E, &
149' ± W. OF POWER POLE #2307663E. SET 2" X 2" X 8" HUB + TACK IN CENTER
OF 2.5" ODIP & REBUILT ROCK MOUND TO 3' ± DIA.

PHYSICAL DESCRIPTION OF MONUMENTS REBUILT OR PERPETUATED PHOTO INFO - ROLL # 098700/-1

EXP. # 5- FACING EAST- LOOKING DOWN

EXP. # 6- FACING EAST

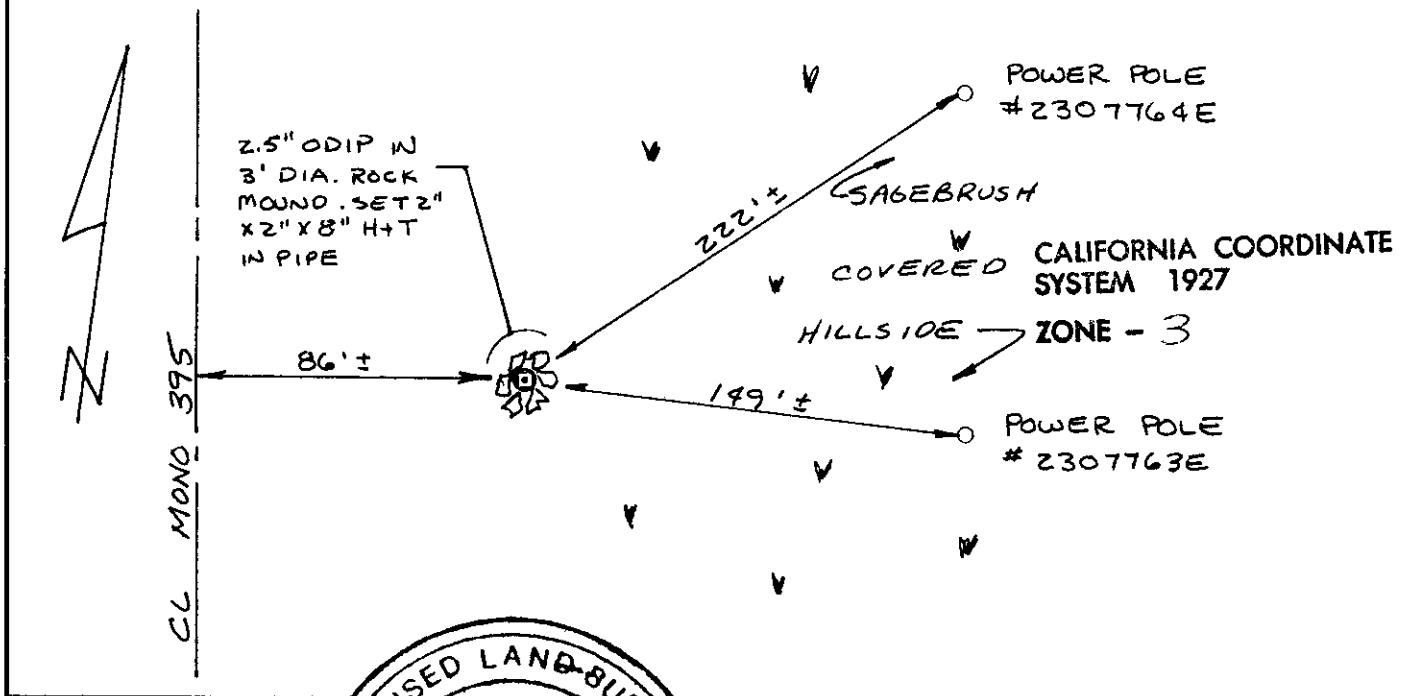
EXP. # 7- FACING NORTH

EXP. # 8- FACING WEST

EXP. # 9- FACING SOUTH

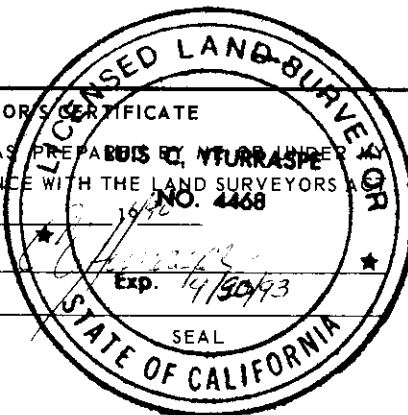
CALIFORNIA COORDINATE SYSTEM ORDER: FIRST ☐ SECOND ☐ THIRD ☒
 STATIONS USED: NGS (USC & GS) ☒ STATE ☐ COUNTY ☐ OTHER ☐ STATION CONWAY STATION BM F-123
 ZONE 3 ELEVATION _____ NORTHINGS (Y) 589,833.0 ± EASTINGS (X) 2,380,764.1 ±

SKETCH: (Include reference tie or witness points, remarks and topo of area)



SURVEYOR'S CERTIFICATE

THIS CORNER RECORD WAS PREPARED BY JOHN C. TURRASPE
 DIRECTION IN CONFORMANCE WITH THE LAND SURVEYORS ACT
 ON 3/8 1990
 SIGNED: [Signature]
 L.S. or R.C.E. No.: _____
 Exp. 14/90/93



COUNTY SURVEYOR'S CERTIFICATE

THIS CORNER RECORD WAS RECEIVED 3-12 1990
 AND EXAMINED AND FILED 5-4 1990
 BY: [Signature]
 TITLE: MONO COUNTY SURVEYOR
 DOCUMENT No. 3N25-23-3
 STATEMENT ON BACK OF SHEET

YES ☐ NO ☒