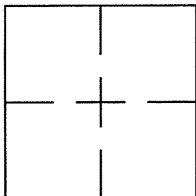


**CORNER RECORD**Document Number CR 8227City of OAKLANDCounty of ALAMEDA, CaliforniaBrief Legal Description WELL MONUMENT LOCATED WITHIN TELEGRAPH AVE AND 23ND STREET.**CORNER RECORD**

Government Corner ☐ Control ☒  
 Meander ☐ Property ☐  
 Rancho ☐ Other ☐  
 Date of Survey 2/18/16

**COORDINATES**  
(Optional)

N. \_\_\_\_\_  
 E. \_\_\_\_\_  
 Zone \_\_\_\_\_ Datum \_\_\_\_\_  
 Elev. \_\_\_\_\_

**Corner** — Left as found ☒ Found and tagged ☐ Established ☐ Reestablished ☐ Rebuilt ☐

Identification and type of corner found: Evidence used to identify or procedure used to establish or reestablish the corner:  
FOUND BRASS DISC IN WELL MONUMENT INTERSECTION OF TELEGRAPH AVE & 23ND ST.

AS SHOWN ON CITY OF OAKLAND MONUMENT MAP, PAGE 238

CITY MONUMENT DESIGNATION NUMBER AT SUBJECT LOCATION 85E03 BM.

THIS POINT WAS FOUND IN GOOD CONDITION AFTER A CONSTRUCTION PROJECT  
IN THE VICINITY.

A description of the physical condition of the monument as found and as set or reset: \_\_\_\_\_

FOUND AND SET POINTS AS SHOWN ON PAGE 2.

THESE TIES ARE FOR THE PURPOSE OF PERPETUATING THE FOUND MONUMENTATION.

NO CLAIM IS MADE AS TO THE RELATIONSHIP OF THE POINTS OR LINES SHOWN HEREON  
TO TRUE BOUNDARY LOCATIONS.

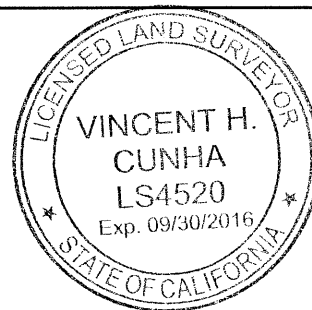
**SURVEYOR'S STATEMENT**

This Corner Record was prepared by me or under my direction in conformance with

the Land Surveyors' Act of MARCH 4, 2016.

Signed Vincent H. Cunha L.S. Number LS 4520

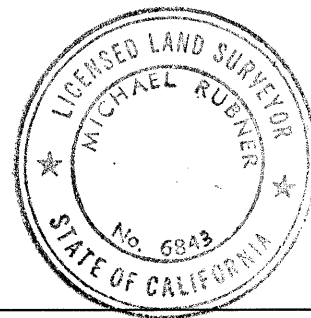
VINCENT H. CUNHA

**COUNTY SURVEYOR'S STATEMENT**

This Corner Record was received 9 MARCH 2016 and examined

and filed 30 MARCH 2016.

Signed Michael Rubner Title COUNTY SURVEYOR



**County Surveyor's Comment** \_\_\_\_\_

SEE CR 6616

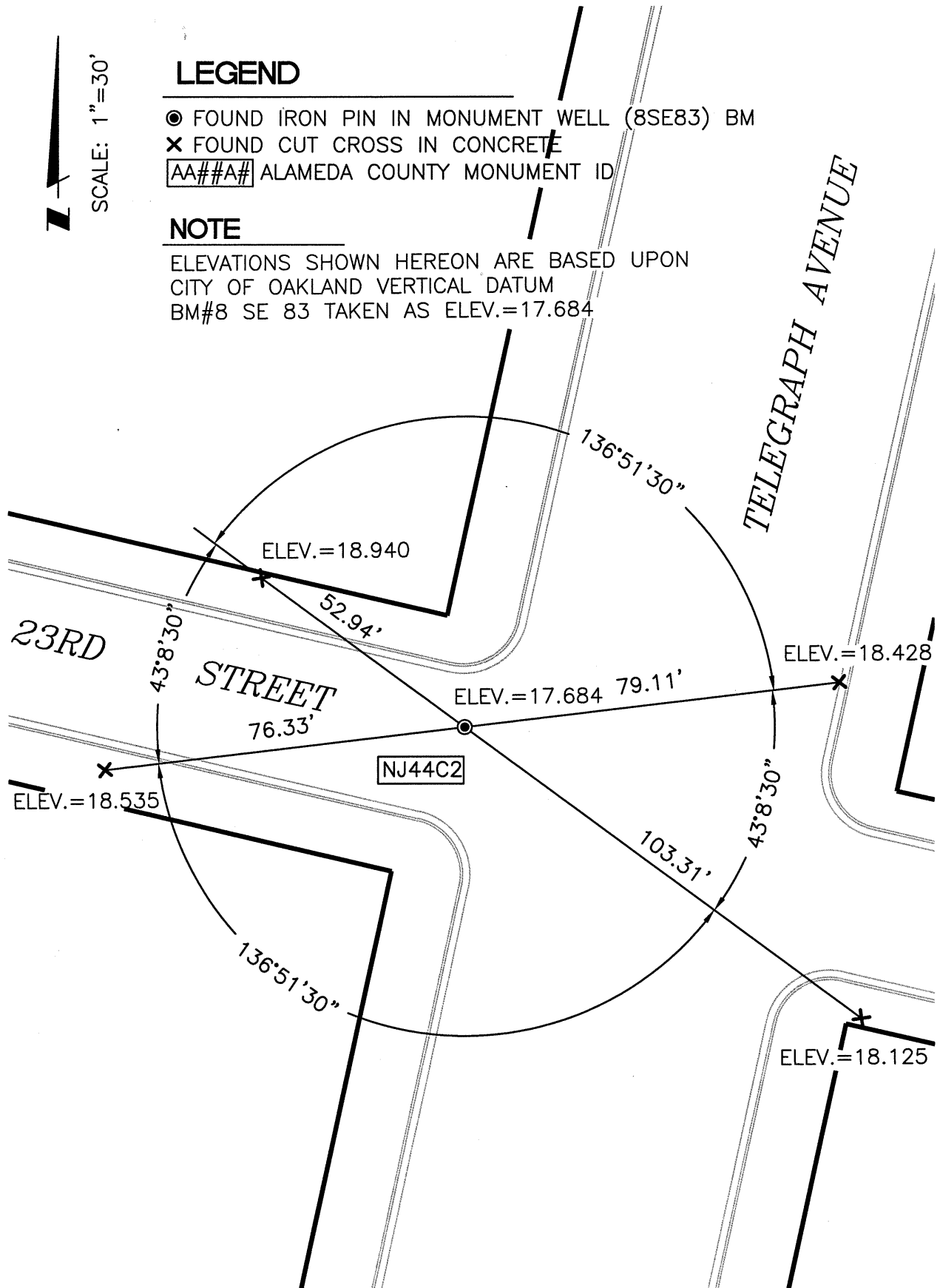
SCALE: 1"=30'

## LEGEND

- FOUND IRON PIN IN MONUMENT WELL (8SE83) BM
- ✕ FOUND CUT CROSS IN CONCRETE
- AA###A# ALAMEDA COUNTY MONUMENT ID

## NOTE

ELEVATIONS SHOWN HEREON ARE BASED UPON  
CITY OF OAKLAND VERTICAL DATUM  
BM#8 SE 83 TAKEN AS ELEV.=17.684



214072-Telegraph-CR13