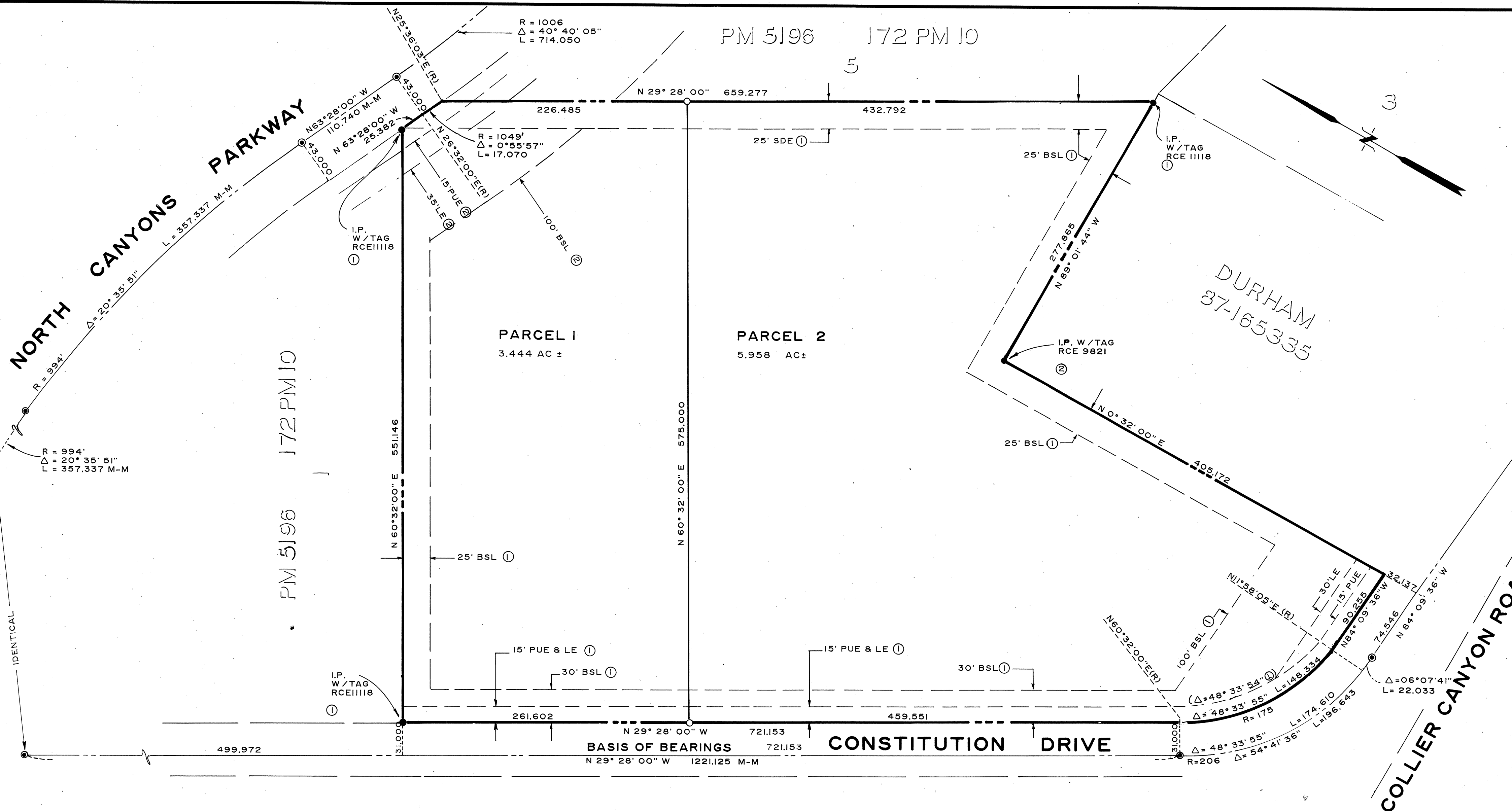


PM 6102  
MAP BK 196 PG 37



**REFERENCE**

- ① PARCEL MAP 5196  
FILED SEPTEMBER 29, 1987  
BOOK 172 OF MAPS AT PAGES 9-10  
ALAMEDA COUNTY RECORDS  
CALIFORNIA.
- ② PARCEL MAP 3994  
FILED DECEMBER 9, 1985  
BOOK 157 OF MAPS AT PAGES 79-90  
ALAMEDA COUNTY RECORDS  
CALIFORNIA.

**BASIS OF BEARINGS**

THE BEARING N 29° 28' 00" W ALONG THE MONUMENT LINE OF CONSTITUTION DRIVE BETWEEN NORTH CANYONS PARKWAY AND COLLIER CANYON ROAD, AS SHOWN ON PARCEL MAP 5196, FILED SEPTEMBER 29, 1987, IN BOOK 172 OF MAPS AT PAGES 9-10, ALAMEDA COUNTY RECORDS, CALIFORNIA, WAS TAKEN AS THE BASIS OF BEARINGS SHOWN HEREON.

**LEGEND**

- EXTERIOR BOUNDARY LINE
- LOT LINE
- MONUMENT LINE
- CITY STANDARD MONUMENT
- IRON PIPE AS NOTED
- SET 1/2" REBAR MARKED LS 4807
- PUE PUBLIC UTILITY EASEMENT
- LE LANDSCAPE EASEMENT
- SDE STORM DRAIN EASEMENT
- BSL BUILDING SETBACK LINE

**PARCEL MAP 6102**  
CITY OF LIVERMORE  
ALAMEDA COUNTY, CALIFORNIA  
ASSOCIATED PROFESSIONS INCORPORATED  
ENGINEERS, ARCHITECTS, SURVEYORS, PLANNERS  
LIVERMORE, CALIFORNIA  
NOVEMBER, 1990

SCALE: 1" = 60'

SHEET 2 OF 2 SHEETS

BK 196 Pg 37