

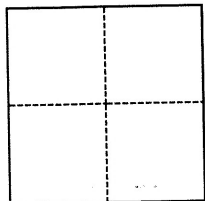
# CORNER RECORD

Agency Index BK 115 PG 66  
Document Number CR-11558

City of Unincorporated County of Alameda, California  
Brief Legal Description 2 Concrete monuments with pin as set per TR 650, 8 MAPS 79

## CORNER TYPE

## COORDINATES (Optional)



☐ Government Corner ☒ Control  
☐ Meander ☐ Property  
☐ Rancho ☐ Other

Date of Survey May 19, 2018

N. \_\_\_\_\_ E. \_\_\_\_\_

Elevation \_\_\_\_\_

Units ☐ Metric ☒ U.S. Survey Foot

Horizontal Datum \_\_\_\_\_

Zone \_\_\_\_\_ Epoch Date \_\_\_\_\_

Vertical Datum \_\_\_\_\_

☐ Complies with Public Resources Code §§8801-8819

☐ Complies with Public Resources Code §§8890-8902

PLS Act Ref.: ☐ 8765(d) ☒ 8771 ☐ 8773 ☐ Other:  
Corner/Monument: ☒ Left as found ☐ Established ☐ Rebuilt ☒ Pre-Construction  
☐ Found and tagged ☐ Reestablished ☐ Referenced ☐ Post-Construction

Narrative of corner identified and monument as found, set, reset, replaced, or removed:

☒ See sheet #2 for description(s):

Tract monuments on Paradise Blvd. between Haven St. and Harmony Dr., adjacent to Lots 21 and 26 of Tract 650.

Referenced as shown on page 2.

## SURVEYOR'S STATEMENT

This Corner Record was prepared by me or under my direction in conformance with

the Professional Land Surveyors' Act on May 22, 2018

Signed [Signature] P.L.S. or R.C.E. No. 7905



## COUNTY SURVEYOR'S STATEMENT

This Corner Record was received 7 JUNE 2018

and examined and filed 16 NOVEMBER 2018

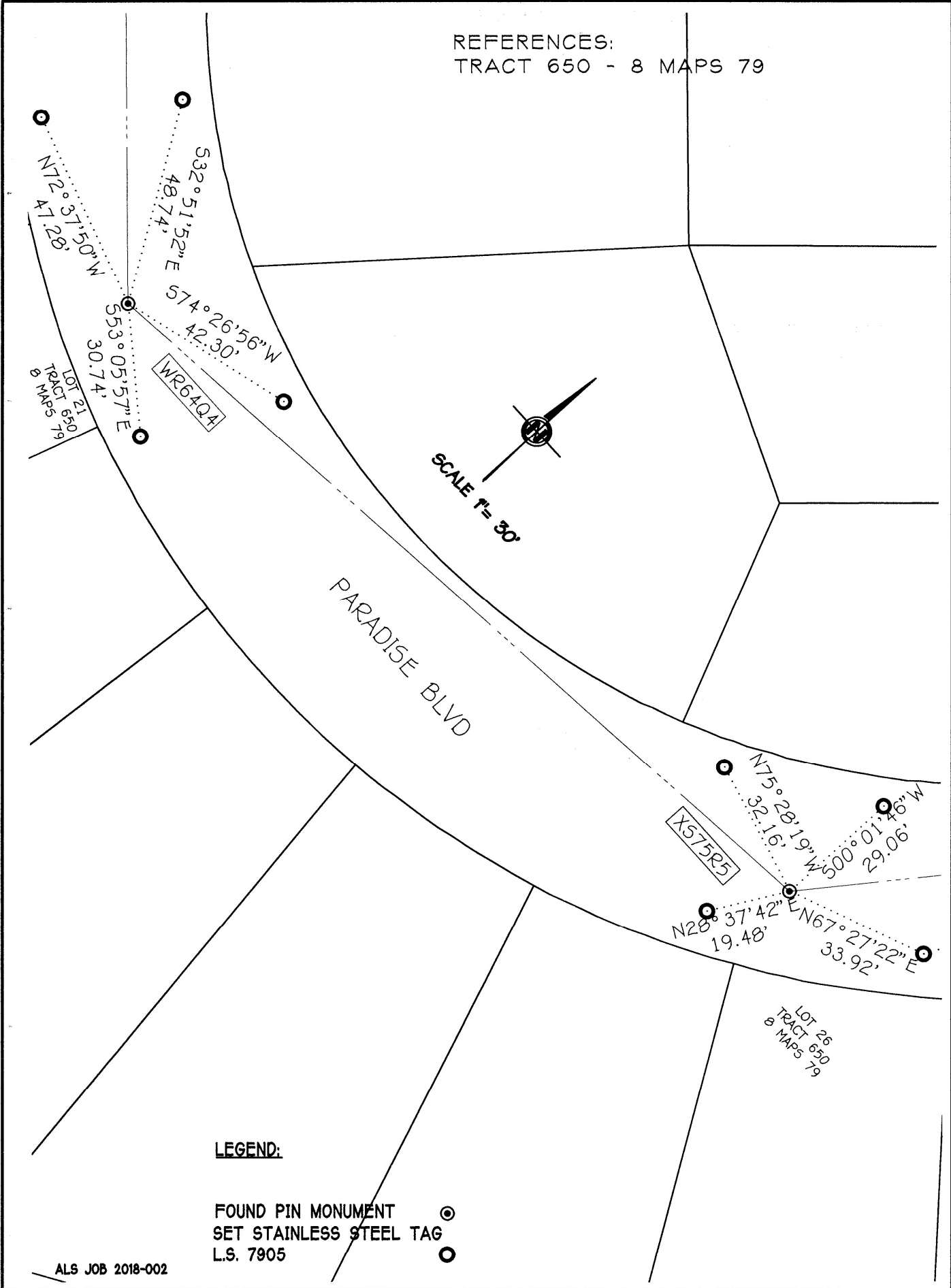
Signed Michael Rubner P.L.S. or R.C.E. No. 6843

Title COUNTY SURVEYOR

County Surveyor's Comment



REFERENCES:  
TRACT 650 - 8 MAPS 79



**LEGEND:**

FOUND PIN MONUMENT  
SET STAINLESS STEEL TAG  
L.S. 7905

ALS JOB 2018-002