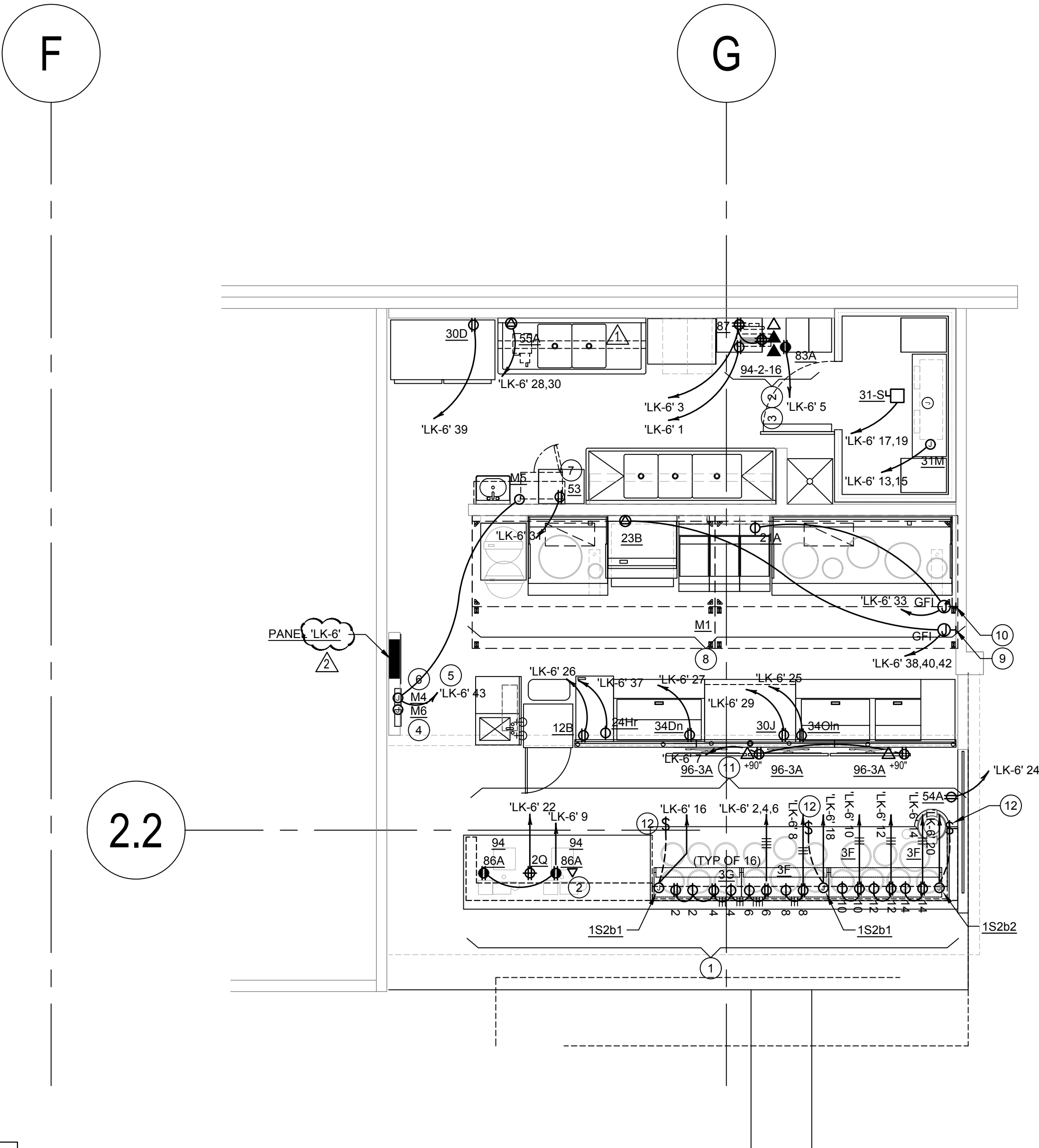


1. VERIFY ALL HVAC & KITCHEN EQUIPMENT PRIOR TO ROUGH IN.		1. ALL CIRCUITRY/CONDUIT FOR FRONT LINE EQUIPMENT TO BE ROUTED IN CASEWORK TO J-BOX IN WALL AND CONCEALED IN WALL.		10. FURNISH AND INSTALL A HUBBELL GFSTBF20 FACELESS GFCI (OR EQUIVALENT) FOR CIRCUIT FEEDING EQUIPMENT BENEATH THE KITCHEN HOOD WHICH UTILIZE SINGLE 20A, 120V RECEPTACLES. INSTALL IN AN ACCESSIBLE LOCATION IN THIS GENERAL AREA, OR AS DIRECTED BY THE OWNER, ARCHITECT OR ENGINEER. PROVIDE ADDITIONAL OUTLETS AS REQUIRED TO FEED ALL SUCH LOADS BENEATH HOOD. FASTEN A PLASTIC LABEL STATING CIRCUIT AND EQUIPMENT SERVED FOR EACH OUTLET.	
2. ALL TELEPHONE/DATA/TV CABLES AND WIRES TERMINATIONS; ALL REQUIRED CABLE; AND JACKS WILL BE INSTALLED BY THIRD PARTY.		2. PROVIDE (2) 1" CONDUITS WITH PULL STRINGS FROM CASH REGISTER TO MANAGER STATION. SEE P.O.S. AND SERVICE LINE ELEVATIONS, SHEET 3/E-200.		11. SEE 3/E-200 FOR SERVICE LINE ELEVATIONS.	
3. POWER SUPPLY FOR COMPUTER, CASH REGISTER (83A, & 86A, OR 87, & 94) SHALL BE ON THE SAME CIRCUIT BREAKER, W/ ISOLATED GROUND & ORANGE RECEPTACLE.		3. SEE 'MANAGER STATION ELEVATION' 1 / E-200 FOR ADDITIONAL OUTLETS AND J-BOXES.		12. CONNECT HEAT LAMPS TO COUNTER-MOUNTED SWITCH PROVIDED AND INSTALLED BY CONTRACTOR. REFER TO PLAN FOR LOCATIONS AND QUANTITIES.	
4. ALL CIRCUITRY SHOWN WITHOUT TICKS SHALL HAVE (2) WIRES PLUS EQUIPMENT GROUNDING CONDUCTOR.		4. ANSUL PULL STATION. REFER TO DETAIL, SHEET 2 / E-400.			
5. WHEN WORKING IN JURISDICTIONS WHICH HAVE ADOPTED THE 2008 NEC OR LATER, ALL MULTI-WIRE BRANCH CIRCUITS SHALL HAVE SEPARATE NEUTRALS TO MEET THE REQUIREMENTS OF 2008 NEC 210.4(B).		5. HOOD CONTROL PANEL/ANSUL SYSTEM CABINET. MOUNT CABINET DIRECTLY BELOW T-BAR CEILING.			
		6. PROVIDE 2-GANG J-BOX @ 48" AFF FOR HOOD CONTROL SWITCHES. REFER TO M-400, M-401 AND M-402.			
		7. PROVIDE WP, IN-USE RED DOT (#CKSUV).			
		8. ALL DEVICES UNDER HOOD TO BE PROVIDED AND INSTALLED WITH SHUNT TRIP CIRCUIT BREAKER AND WATERPROOFING BOX (RED DOT #CKSUV). REFER TO COOKLINE ELECTRICAL ELEVATIONS, SHEET 6/E-200.			
		9. ELECTRIC GRILL '23B': FEED WITH 3 #8, #10 GROUND, 3/4" CONDUIT. PROVIDE A REMOTE GFI TRIP DEVICE IN ACCORDANCE W/ NEC 210.8 (B)(2). INSTALL IN AN ACCESSIBLE LOCATION IN THIS GENERAL AREA, OR AS DIRECTED BY THE OWNER, ARCHITECT OR ENGINEER. SEE DETAIL 2/E-200 FOR ADDITIONAL INFORMATION.			
POWER PLAN GENERAL NOTES		2	#	POWER PLAN KEYED NOTES	
NOT TO SCALE		E-100		NOT TO SCALE	
				E-100	



ALL SINGLE-PHASE RECEPTACLES RATED 150 VOLTS TO GROUND OR LESS; 50 AMPERES OR LESS AND THREE PHASE RECEPTACLES RATED 150 VOLTS TO GROUND OR LESS; 100 AMPERES OR LESS INSTALLED IN KITCHEN AREAS SHALL BE GROUND FAULT PROTECTED AS REQUIRED BY NEC 210.8 (B) (2).

NO UNDER SLAB ELECTRICAL WORK ALLOWED UNLESS OTHERWISE NOTED ON PLAN.



PANDA RESTAURANT GROUP INC.
1683 Walnut Grove Ave.
Rosemead, California 91770
Telephone: 626.799.9898
Facsimile: 626.372.8288

All ideas, designs, arrangement and plans indicated or represented by this drawing are the property of Panda Express Inc. and were created for use on this specific project. None of these ideas, designs, arrangements or plans may be used by or disclosed to any person, firm, or corporation without the written permission of Panda Express Inc.

REVISIONS:	
PLAN REVIEW COMMENTS	03/26/2021
REVISED LABLE	05/11/2021

ISSUE DATE:	
1 95% SUBMITTAL	01/11/2020
2 100% SUBMITTAL	04/16/2021
3 100% RESUBMITTAL	05/14/2021
4 FINAL SUBMITTAL	06/08/2021

DRAWN BY: JMJ

PANDA PROJECT #: D7395
ARCH PROJECT #:



MARSHALL & BOLLWERK
ENGINEERING, INC.
8881 Highway 92, Suite 400
Woodstock, Ga. 30189
p: (878) 795-0333, f: (878) 325-4559
e: mbe@mbeinc.net



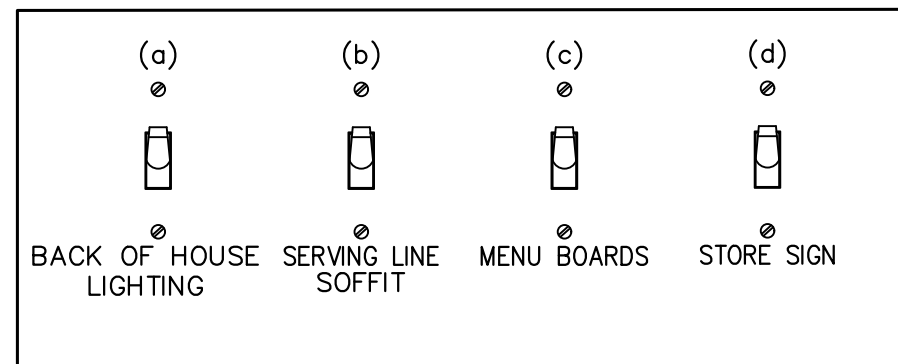
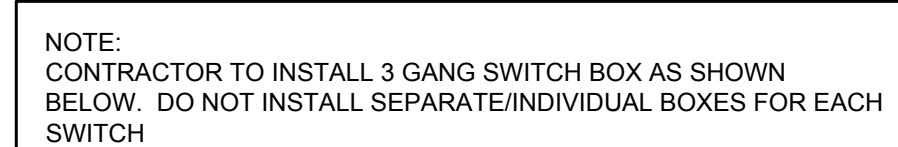
PANDA EXPRESS

ROBINS AFB SHOPPING CENTER
ROBINS AFB, GA

E-100

POWER FLOOR PLAN

BID SET - 2021/06/28

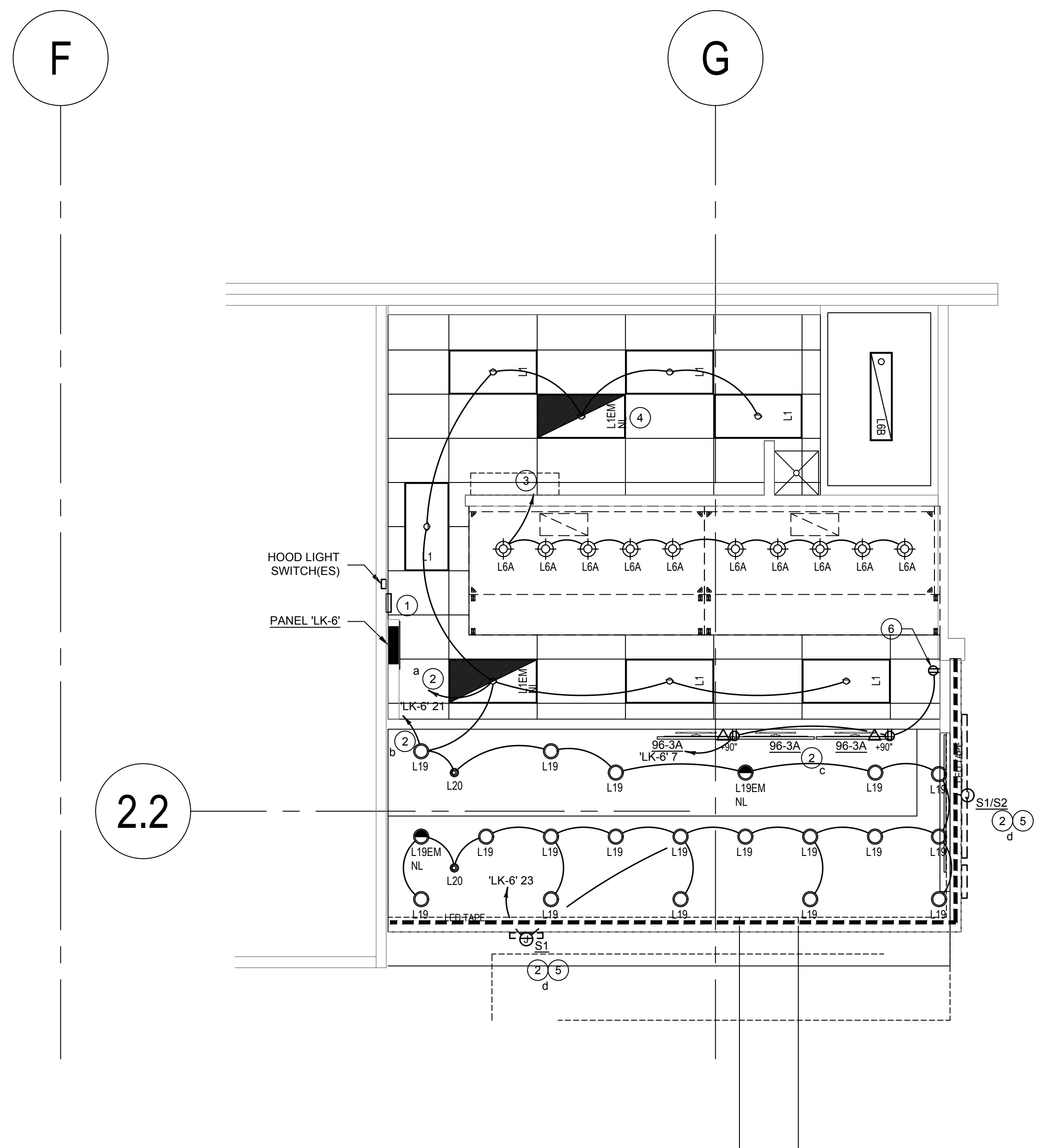


SWITCHBANK 'A' SCHEDULE				
TAG	SWITCH TYPE	AREA SERVED / SWITCH LABEL	CIRCUIT	LOAD
a	TOGGLE SWITCH	BACK-OF-HOUSE	'LK-6' 21	550 VA
b	TOGGLE SWITCH	SERVING LINE SOFFIT	'LK-6' 21	173 VA
c	TOGGLE SWITCH	MENU, LED ACCENTS	'LK-6' 7	900 VA
d	TOGGLE SWITCH	STORE SIGN	'LK-6' 23	1,200 VA

1. SWITCHBANK 'A'. REFER TO SCHEDULE THIS SHEET (4/E-101).
2. ROUTE HOMERUN THROUGH LIGHTING SWITCHBANK 'A' (SWITCHES AS NOTED IN LOWER CASE). REFER TO SCHEDULE (4/E-101) FOR MORE INFORMATION.
3. ROUTE THROUGH CONTACTS IN HOOD CONTROL PANEL 'M4' FOR CIRCUIT POWER. REFER TO DETAILS, SHEETS 8 / E-400.
4. PROVIDE SEPARATE UN-SWITCHED HOT CONDUCTOR TO NIGHT LIGHT 'NL' FIXTURES AND EMERGENCY FIXTURES. CONNECT TO EXISTING EMERGENCY LIGHTING CIRCUIT SERVING THIS AREA.
5. J-BOX FOR SIGNAGE. COORDINATE LOCATION WITH ARCHITECT / OWNER / SIGN PACKAGE. SIGN DISCONNECT PROVIDED BY SIGN CONTRACTOR.
6. DUPLEX RECEPTACLE AT SOFFIT FOR LED ROPE. INSTALL ON BACK OF BULKHEAD. COORDINATE w/ ARCHITECTURAL PLANS & PANDA EXPRESS CONSTRUCTION MANAGER FOR MORE INFORMATION.

1. CONTRACTOR SHALL PROVIDE ALL REQUIRED HARDWARE, BRACKETS, ETC. FOR A COMPLETE INSTALLATION.
2. ALL LIGHTING FIXTURES SHALL BE SUPPORTED PER N.E.C. 410-16(C). SEE DETAIL, SHEET 1 / E-4.00.
3. CONTRACTOR SHALL INSTALL ALL LIGHTING FIXTURES INCLUDING OWNER-FURNISHED FIXTURES.
4. ALL FIXTURE BALLASTS/DRIVERS SHALL BE U.L. LISTED.
5. G.C. SHALL INSTALL OWNER SUPPLIED LED ROPE LIGHT & CUT TO PROPER LENGTH
6. WHEN WORKING IN JURISDICTIONS WHICH HAVE ADOPTED THE 2008 NEC OR LATER, ALL MULTI-WIRE BRANCH CIRCUITS TO HAVE SEPARATE NEUTRALS TO MEET THE REQUIREMENTS OF 2008 NEC 210.4(B).
7. ALL CIRCUITRY SHOWN WITHOUT TICS SHALL HAVE (2) WIRES PLUS EARTH GROUNDING CONDUCTOR.
8. "N.L." DESIGNATION INDICATES NIGHT LIGHT ON UN-SWITCHED CIRCUIT.

LIGHTING SWITCHBANK SCHEDULE		4	Ⓢ LIGHTING KEYED NOTES	3	LIGHTING GENERAL NOTES		2
	NOT TO SCALE	E-101		NOT TO SCALE	E-101		NOT TO SCALE E-101



PANDA RESTAURANT GROUP INC.
1683 Walnut Grove Ave.
Rosemead, California
91770
Telephone: 626.799.9898
Facsimile: 626.372.8288

All ideas, designs, arrangement and plans indicated or represented by this drawing are the property of Panda Express Inc. and were created for use on this specific project. None of these ideas, designs, arrangements or plans may be used by or disclosed to any person, firm, or corporation without the written permission of Panda Express Inc.

REVISIONS:

[illegible]

ISSUE DATE:

1	95% SUBMITTAL	01/11/2020
2	100% SUBMITTAL	04/16/2021
3	100% RESUBMITTAL	05/14/2021
4	FINAL SUBMITTAL	06/08/2021

DRAWN BY: JMJ

PANDA PROJECT #: D7395
ARCH PROJECT #:



**MARSHALL & BOLLWERK
ENGINEERING, INC.**
8681 Highway 92, Suite 400
Woodstock, Ga. 30189
p: (678) 795-0333, f: (678) 325-4559
e: mbe@mbeinc.net



PANDA EXPRESS

ROBINS AFB SHOPPING CENTER
ROBINS AFB, GA

E-101

LIGHTING FLOOR PLAN

LIGHTING FLOOR PLAN	1
---------------------	---

Scale: 1/4"=1'-0"	E-101
-------------------	-------

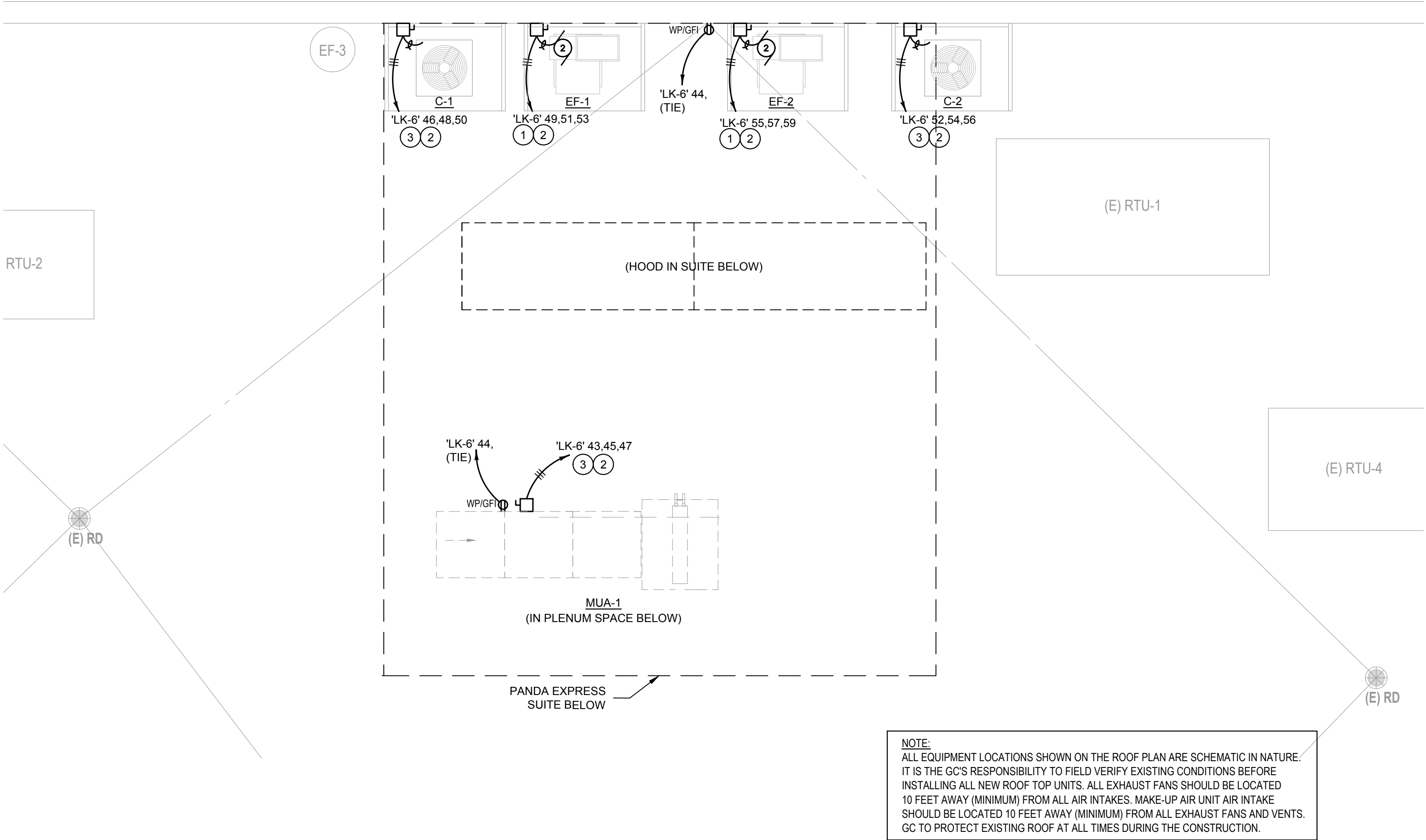
BID SET - 2021/06/28

ROOFTOP EQUIPMENT SCHEDULE											
TAG	DESCRIPTION	KW	H.P.	FLA	VOLT/Ø	WIRE, CONDUIT	CONN	MOUNT HEIGHT	DISC. SW. WITH RK1 FUSES PER MFR'S REQ'S. AND/OR REMARKS		
CU-1	CONDENSING UNIT			21.4	208V.3Ø	3 #10, #10 GND., 3/4" C.		AT UNIT	30A. 3P. 3F. WP ①②④		
CU-2	CONDENSING UNIT			21.4	208V.3Ø	3 #10, #10 GND., 3/4" C.		AT UNIT	30A. 3P. 3F. WP ①②④		
MA-1	MAKE-UP AIR UNIT		△	5.0	15.0	208V.3Ø	3 #10, #10 GND., 3/4" C.	AT UNIT	30A. 3P. 3F. WP ①③		
EF-1	EXHAUST FAN			2.0	5.9	208V.3Ø	3 #12, #12 GND., 3/4" C.	AT UNIT	30A. 3P. 3F. WP ①④		
EF-2	EXHAUST FAN			2.0	5.9	208V.3Ø	3 #12, #12 GND., 3/4" C.	AT UNIT	30A. 3P. 3F. WP ①④		

- ① DISCONNECT SWITCH PROVIDED WITH UNIT.
- ② COMBINATION 30A. 3P. 3F. WP DISCONNECT SWITCH WITH RK5 FUSES PER MANUFACTURER RECOMMENDATION.
- ③ ELECTRICAL FEEDS ARE TO BE ROUTED FROM PLENUM SPACE, UP THROUGH EQUIPMENT CURB, INTO BOTTOM OF EQUIPMENT, THROUGH FACTORY INSTALLED WATER TIGHT CONNECTIONS.
- ④ ELECTRICAL FEEDS ARE TO BE ROUTED FROM TENANT SPACE, THROUGH WALL & PARAPET w/ DUCT, THROUGH WATER TIGHT CONNECTIONS.

1. STUB ELECTRICAL FEED FOR EF-1 & EF-2, THROUGH WALL & PARAPET w/ DUCT, IN LOCATION AS SHOWN ON POWER ROOF PLAN. REFER TO DETAIL 18M-500 FOR ADDITIONAL DETAILS.
2. CIRCUIT FEEDS FROM PANELBOARD - THROUGH HOOD CONTROL PANEL - UP TO ROOF, REFER TO DETAIL, SHEET 8 / E-400 & KITCHEN HOOD SUBMITTAL DATA.
3. FEED THROUGH FACTORY THRU BASE CONNECTION AREA. COORDINATE WITH MECHANICAL.
1. ALL ROOF MOUNTED EQUIPMENT SHALL BE IN NEMA-3R ENCLOSURES.
2. ALL CONDUIT RUNS SHOWN ON THE ROOF SHALL BE RUN BELOW THE ROOF IN THE CEILING SPACE WHERE AMBIENT TEMPERATURE WILL BE BELOW 30° C. FINAL CONNECTIONS TO THE ROOF EQUIPMENT IS LIMITED TO 5'-0" OF DIRECT SOLAR EXPOSURE.
3. G.C. COORDINATE ELECTRICAL, MECHANICAL, FIRE ALARM (IF REQUIRED) FOR INTERLOCK SEQUENCE.
4. VERIFY ALL FUSE SIZES AND TYPES WITH THE EQUIPMENT MANUFACTURER PRIOR TO INSTALLATION.

HVAC EQUIPMENT SCHEDULE				4	# ROOF PLAN KEYED NOTES				3	ROOF PLAN GENERAL NOTES				2
NOT TO SCALE				E-104	NOT TO SCALE				E-104	NOT TO SCALE				E-104



PANDA RESTAURANT GROUP INC.
1683 Walnut Grove Ave.
Rosemead, California
91770
Telephone: 626.799.9898
Facsimile: 626.372.8288

All ideas, designs, arrangement and plans indicated or represented by this drawing are the property of Panda Express Inc. and were created for use on this specific project. None of these ideas, designs, arrangements or plans may be used by or disclosed to any person, firm, or corporation without the written permission of Panda Express Inc.

REVISIONS:		
△	PLAN REVIEW COMMENTS	03/26/2021

ISSUE DATE:		
1	95% SUBMITTAL	01/11/2020
2	100% SUBMITTAL	04/16/2021
3	100% RESUBMITTAL	05/14/2021
4	FINAL SUBMITTAL	06/08/2021

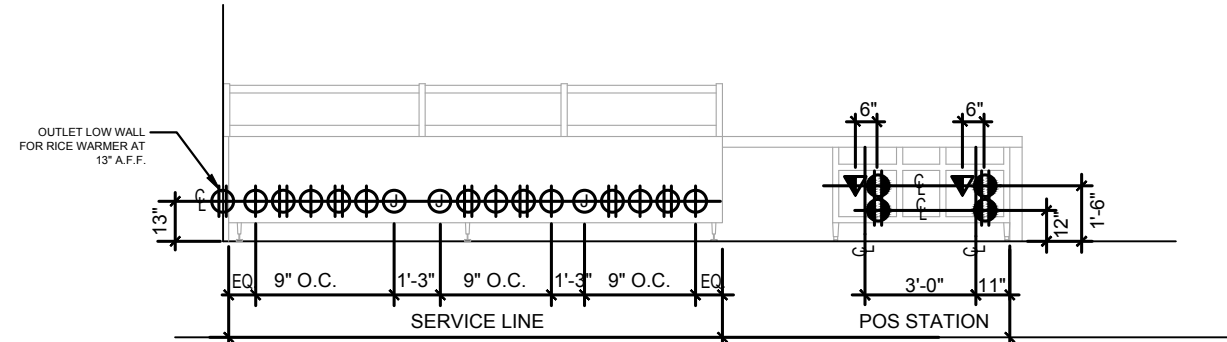
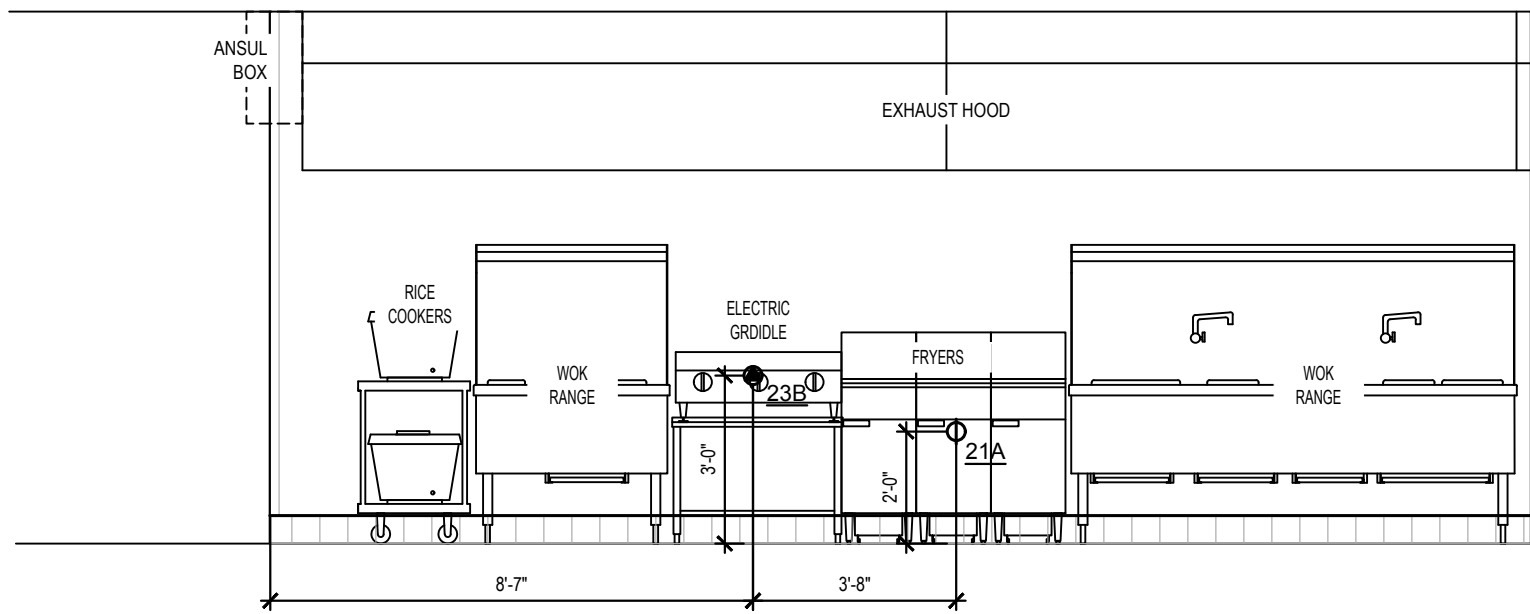
DRAWN BY: JMJ

PANDA PROJECT #: D7395
ARCH PROJECT #:



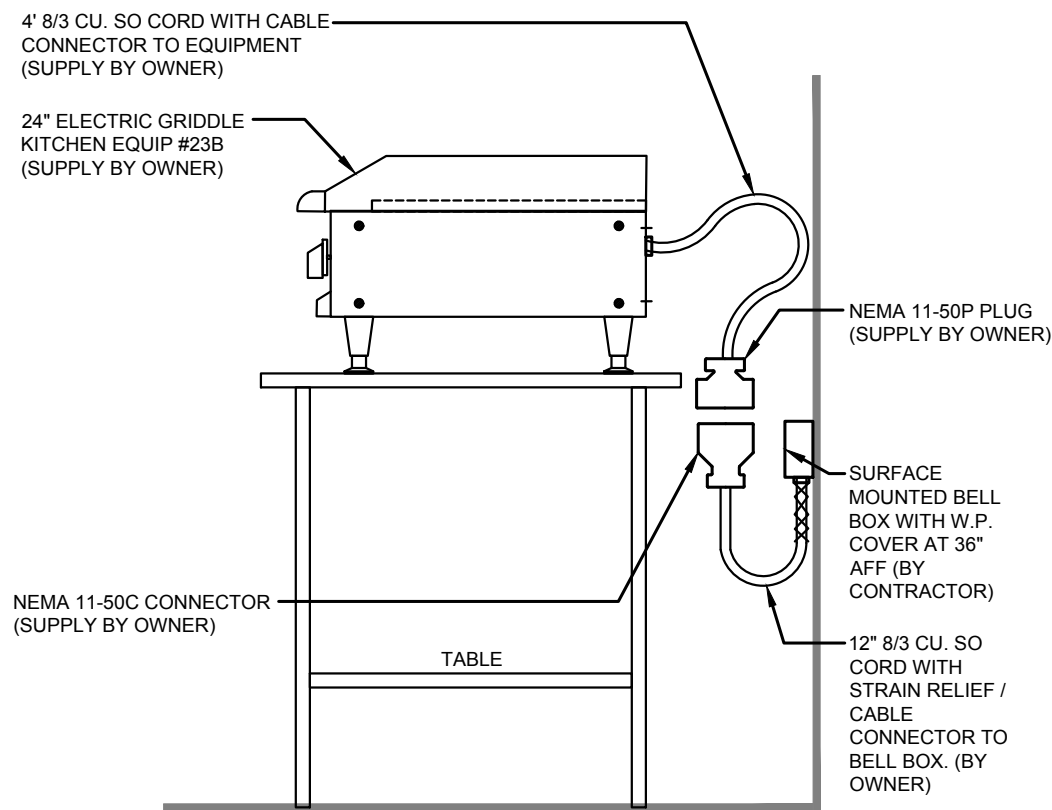
PANDA EXPRESS
ROBINS AFB SHOPPING CENTER
ROBINS AFB, GA

BID SET - 2021/06/28

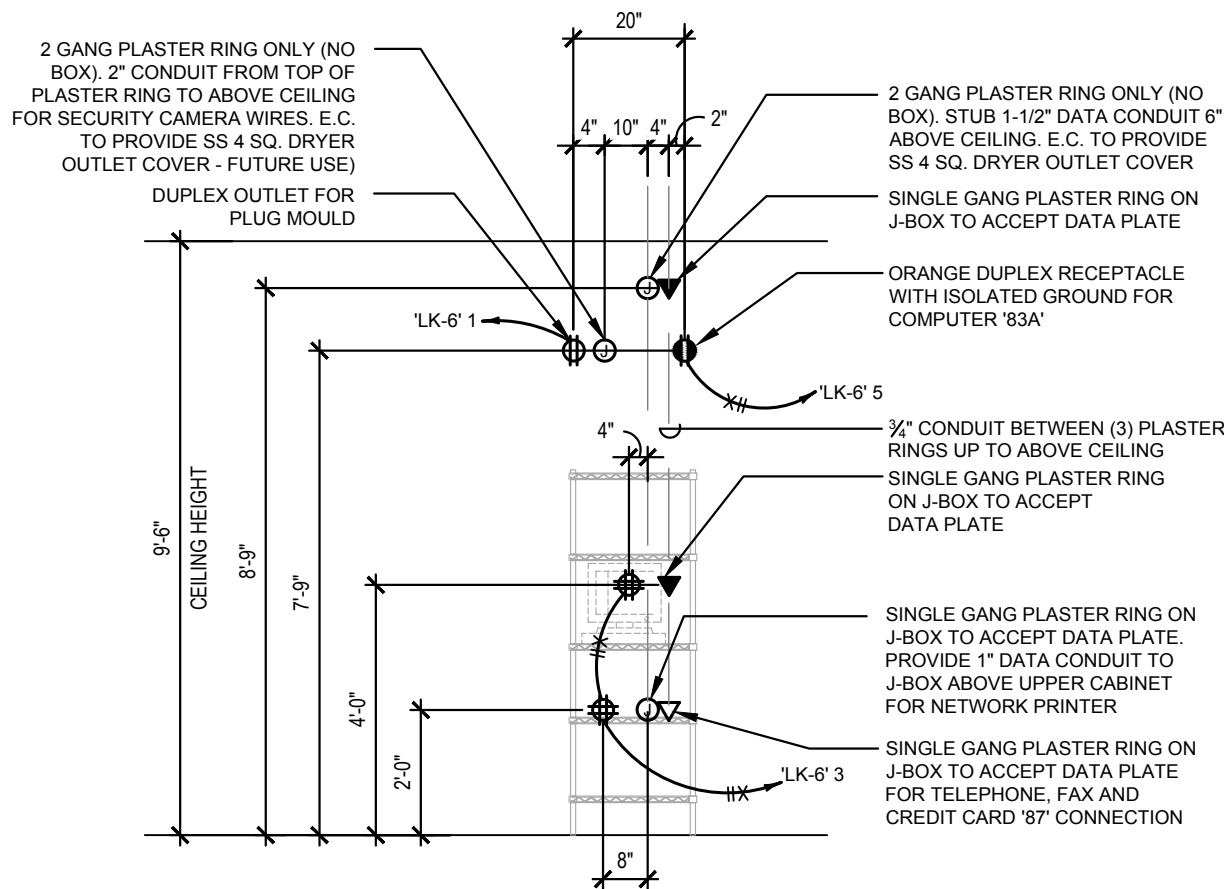


COOKLINE ELECTRICAL ELEVATIONS 4
NOT TO SCALE E-200

P.O.S. & SERVICE LINE ELEVATION 3
NOT TO SCALE E-200



DETAIL AT ELECTRIC GRIDDLE (23B) 2
NOT TO SCALE E-200



MANAGER STATION ELEVATIONS 1
NOT TO SCALE E-200



PANDA RESTAURANT GROUP INC.
1683 Walnut Grove Ave.
Rosemead, California
91770
Telephone: 626.799.9898
Facsimile: 626.372.8288

All ideas, designs, arrangement and plans indicated or represented by this drawing are the property of Panda Express Inc. and were created for use on this specific project. None of these ideas, designs, arrangements or plans may be used by or disclosed to any person, firm, or corporation without the written permission of Panda Express Inc.

REVISIONS:		
1	PLAN REVIEW COMMENTS	03/26/2021

ISSUE DATE:		
1	95% SUBMITTAL	01/11/2020
2	100% SUBMITTAL	04/16/2021
3	100% RESUBMITTAL	05/14/2021
4	FINAL SUBMITTAL	06/08/2021

DRAWN BY: JMJ

PANDA PROJECT #: D7395
ARCH PROJECT #:



MARSHALL & BOLLWERK
ENGINEERING, INC.
8881 Highway 92, Suite 400
Woodstock, Ga. 30189
p: (878) 795-0333, f: (878) 325-4559
e: mbe@mbelinc.net



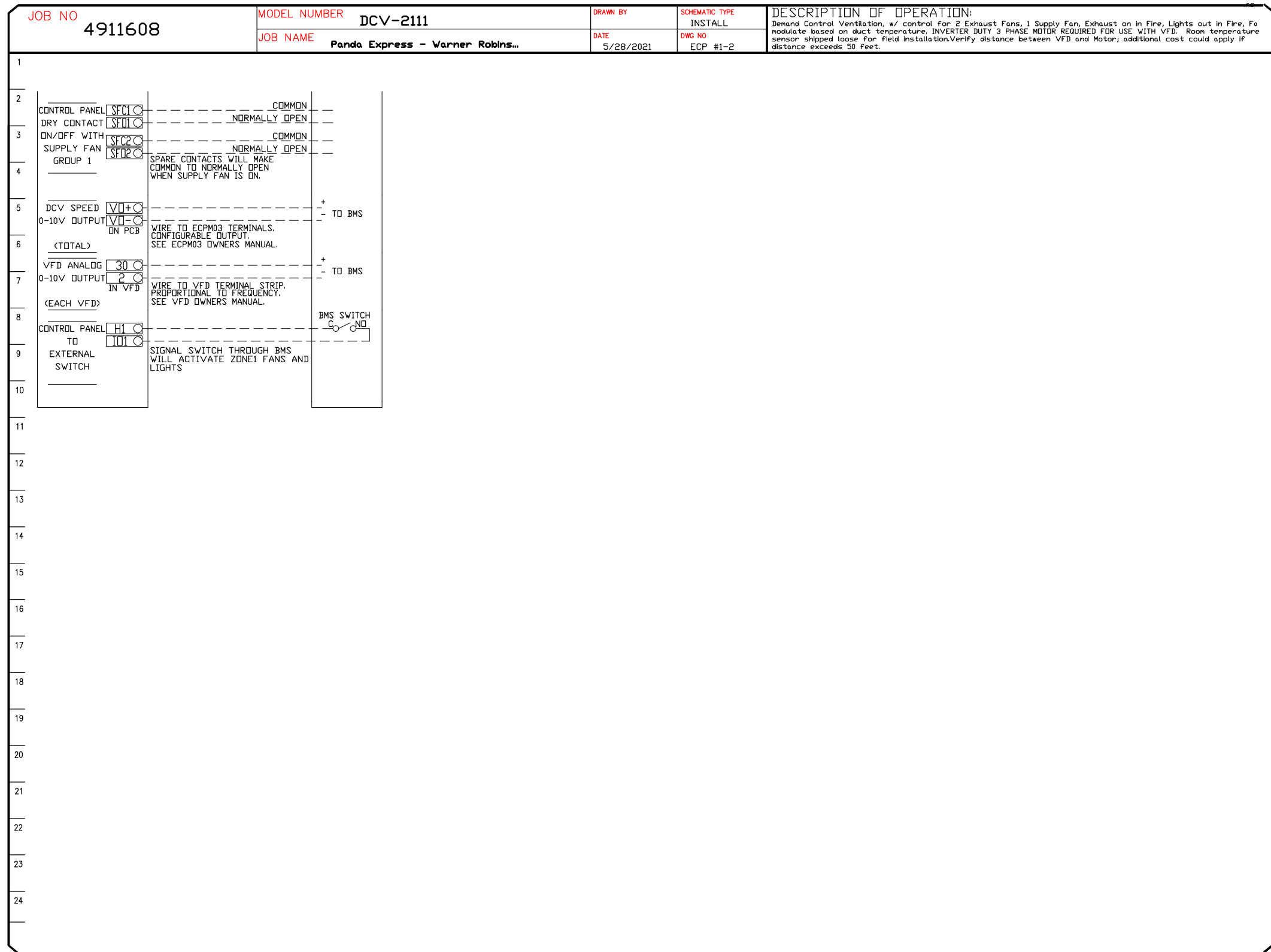
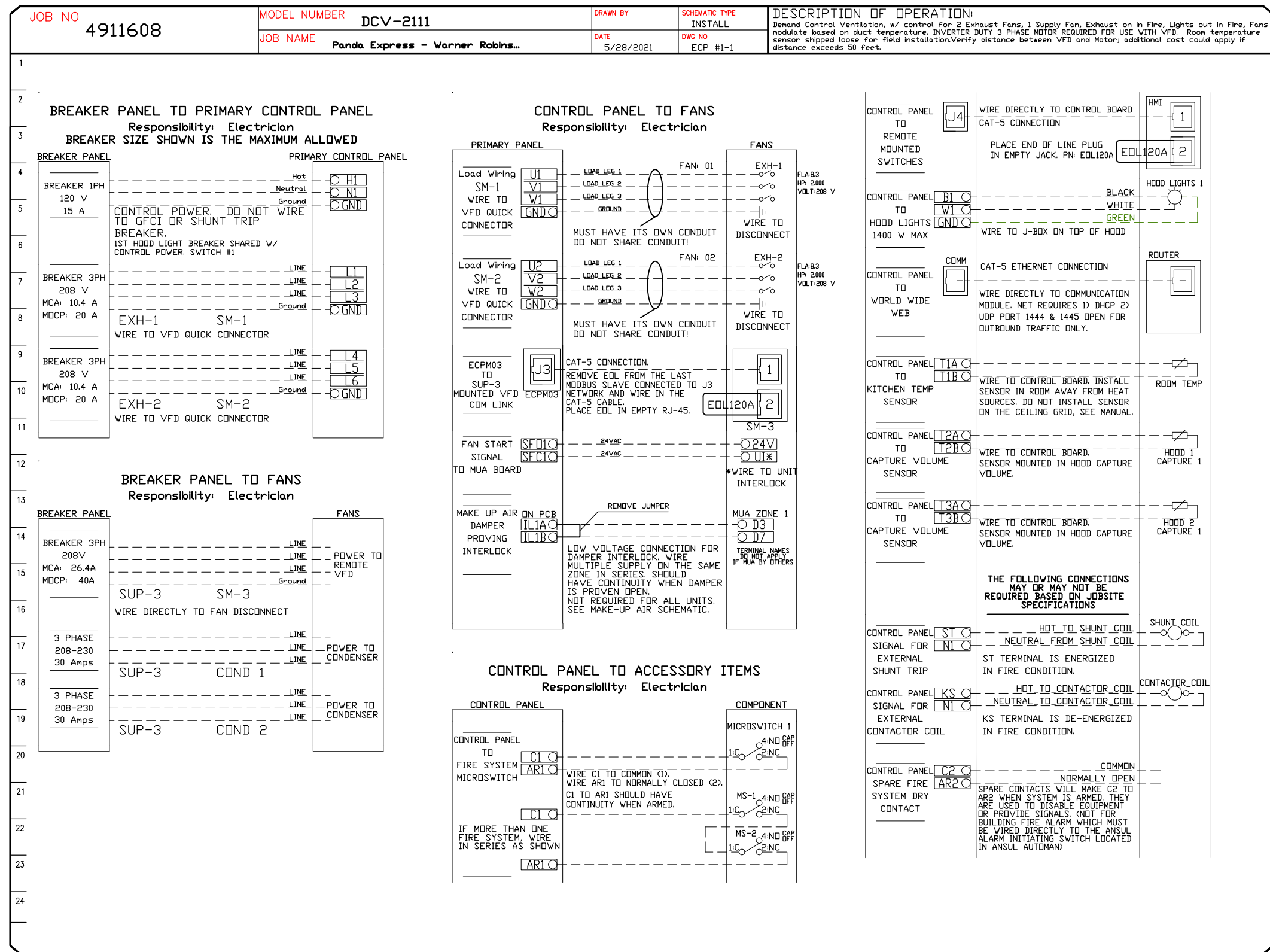
PANDA EXPRESS

ROBINS AFB SHOPPING CENTER
ROBINS AFB, GA

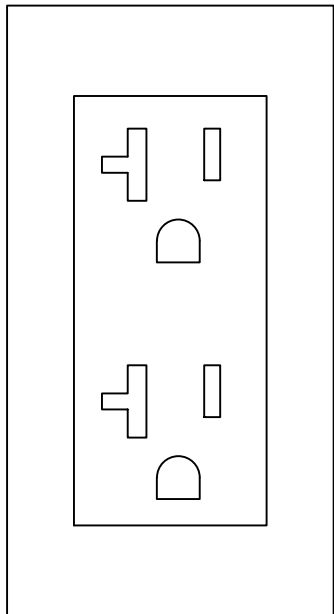
E-200

ELECTRICAL ELEVATIONS

BID SET - 2021/06/28



NOT USED	4
NOT TO SCALE	E-400



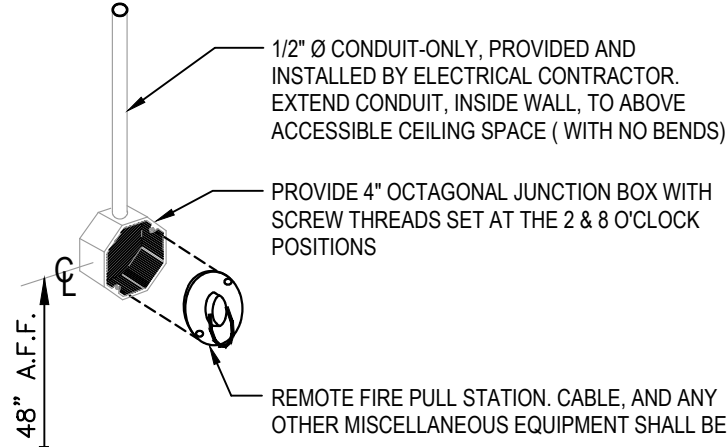
ALL OUTLETS TO MOUNT VERTICALLY WITH GROUND PLUG @ LOW POSITION, TYP. U.N.O.

ALL OTHER OUTLETS IN KITCHEN, SERVICE AREA, DINING AREA AND RESTROOMS TO BE GREY DEVICES WITH STAINLESS STEEL COVERPLATES.

NOT USED	7
NOT TO SCALE	E-400

RECEPT. DIAGRAM

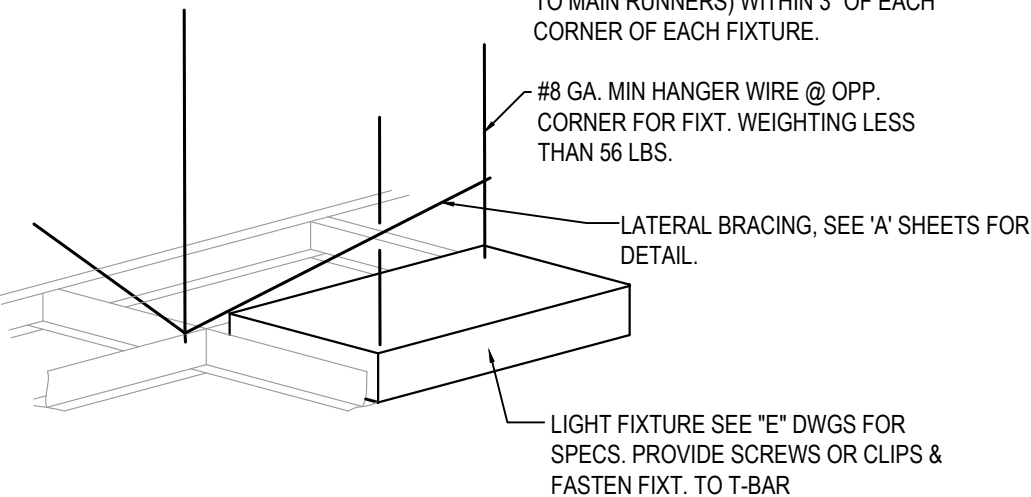
3



NOT USED	6
NOT TO SCALE	E-400

ANSUL PULL STATION DETAIL

2



NOT USED	5
NOT TO SCALE	E-400

LIGHT FIXTURE DETAIL

1

KITCHEN EXHAUST SYSTEM DIAGRAM

8

NOT TO SCALE E-400



PANDA RESTAURANT GROUP INC.

1683 Walnut Grove Ave.
Rosemead, California
91770

Telephone: 626.799.9898
Facsimile: 626.372.8288

All ideas, designs, arrangement and plans indicated or represented by this drawing are the property of Panda Express Inc. and were created for use on this specific project. None of these ideas, designs, arrangements or plans may be used by or disclosed to any person, firm, or corporation without the written permission of Panda Express Inc.

REVISIONS:

PLAN REVIEW COMMENTS	03/26/2021
----------------------	------------

ISSUE DATE:

1	95% SUBMITTAL	01/11/2020
2	100% SUBMITTAL	04/16/2021
3	100% RESUBMITTAL	05/14/2021
4	FINAL SUBMITTAL	06/08/2021

DRAWN BY: JMJ

PANDA PROJECT #: D7395

ARCH PROJECT #:



**MARSHALL & BOLLWERK
ENGINEERING, INC.**
8881 Highway 82, Suite 400
Woodstock, Ga. 30189
p: (678) 795-0333, f: (678) 325-4559
e: mbe@mbeinc.net



PANDA EXPRESS

ROBINS AFB SHOPPING CENTER
ROBINS AFB, GA

E-400

ELECTRICAL DETAILS, DIAGRAMS

BID SET - 2021/06/28



PANDA RESTAURANT GROUP INC.

1683 Walnut Grove Ave.
Rosemead, California
91770

Telephone: 626.799.9898
Facsimile: 626.372.8288

All ideas, designs, arrangement and plans indicated or represented by this drawing are the property of Panda Express Inc. and were created for use on this specific project. None of these ideas, designs, arrangements or plans may be used by or disclosed to any person, firm, or corporation without the written permission of Panda Express Inc.

REVISIONS:

PLAN REVIEW COMMENTS	03/26/2021
PLAN REVIEW COMMENTS	04/22/2021

ISSUE DATE:

1	95% SUBMITTAL	01/11/2020
2	100% SUBMITTAL	04/16/2021
3	100% RESUBMITTAL	05/14/2021
4	FINAL SUBMITTAL	06/08/2021

DRAWN BY: JMJ

PANDA PROJECT #: D7395

ARCH PROJECT #:



**MARSHALL & BOLLWERK
ENGINEERING, INC.**
8881 Highway 92, Suite 400
Woodstock, Ga. 30189
p: (678) 795-0333, f: (678) 325-4559
e: mbe@mbeinc.net



PANDA EXPRESS

ROBINS AFB SHOPPING CENTER
ROBINS AFB, GA

E-601

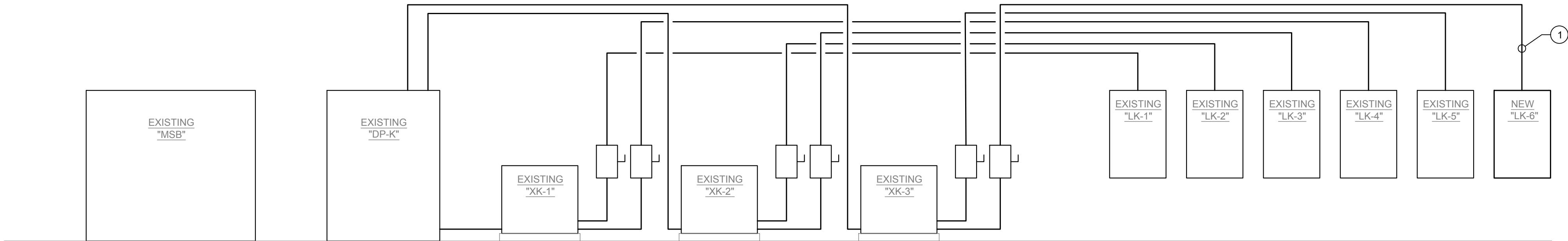
PANEL SCHEDULES & LOAD CALC'S

"LK-6" (NEW)					PANELBOARD					208Y/120V, 3φ, 4W, 225A MCB RATED 10 k A.I.C. GROUND BUS				
MOUNTING: FLUSH LOCATION: BACK OF HOUSE. TYPE: BOLT ON BKRS. w/ GROUND BUS NEMA RATING: 1					PROVIDE AN ARC FLASH WARNING SIGN PER NEC 110.16.									
BRKR	DESCRIPTION	WIRE	BKR	PL	kVA			PL	BKR	WIRE	DESCRIPTION	BRKR		
					A	B	C							
1	PLUGMOLD, MGR STA '49A'	12	20	1	0.90	1.30		1	20	10	INDUCTION DRY WELL 3F, 3G-GFI	2		
3	VCR MONITOR '92-2-16'	12	20	1		0.36	1.30	1	20	10	INDUCTION DRY WELL 3F, 3G-GFI	4		
5	COMP '83A', MGR STA '49A'	12	20	1			0.18	1.30	1	20	10	INDUCTION DRY WELL 3G-GFI	6	
7	MENU BOARDS - RECPS '96-3A'	12	20	1	0.54	1.95			1	20	10	INDUCTION DRY WELL 3F, 3G-GFI	8	
9	SER. AREA POS'S 94, PTRS '86A'	12	20	1		0.36	1.30		1	20	10	INDUCTION DRY WELL 3G-GFI	10	
11	SPARE	12	20	1			0.00	1.30	1	20	10	INDUCTION DRY WELL 3G-GFI	12	
13	WALK-IN COOLER EVAP. - '31M'	12	15	2	0.25	1.30			1	20	10	INDUCTION DRY WELL 3G-GFI	14	
15						0.25	0.84		1	20	12	RADIANT TOP HEATER '1S2B1'- GFI	16	
17	WALK-IN COOLER COND. - '31-S'	12	15	2			1.04	0.84	1	20	12	RADIANT TOP HEATER '1S2B1'- GFI	18	
19	LIGHTS	12	20	1	1.04	1.10			1	20	12	RADIANT TOP HEATER '1S2B2'- GFI	20	
21						0.72	1.80		1	20	12	SERVING COUNTER '2Q'	22	
23	LOGO 'S2/I.D. SIGN '81'	12	20	1			1.20	0.18	1	20	12	RICE WARMER '54A'	24	
25	REF. PREP TABLE '34CH'- GFI	12	20	1	1.44	0.80			1	20	12	COKE REFRIG. '12B'- GFI	26	
27	REF. PREP TABLE '34DY'- GFI	12	20	1		1.08	0.90		2	15	12	MICROWAVE - '55A'- GFI	28	
29	WORKTOP FRZR '3QJ'- GFI	12	20	1			1.44	0.90					30	
31	FOOD PROCESSOR '53'	12	20	1	0.34	0.00			1	20	-	SPARE	32	
33	FRY. CONTROL '21A'	12	20	1		1.20	0.00		1	20	-	SPARE	34	
35	(SHUNT)	-	-	-			0.00	0.00	-	-	-	(SHUNT TRIP)	36	
37	RICE HOLDING CABINET '24H'- GFI	10	20	1	1.78	3.00							38	
39	2 DR UPRIGHT FREEZER '30D'- GFI	12	20	1		0.76	3.00		3	35	10	24" ELECTRIC GRIDDLE - '23B'	40	
41	HOOD/ANSUL CONT PNL '1M' & '1M5'	12	20	1			1.00	3.00					42	
43					1.80	1.50			1	20	12	RECEPT. ON ROOF	44	
45	MAKE-UP AIR UNIT - 'MJA-1'	10	30	3		1.80	2.09						46	
47							1.80	2.09	3	30	10	CONDENSING UNIT - 'C-1'	48	
49					1.42	2.09							50	
51	HOOD EXHAUST FANS - 'EF-1' & 'EF-2'	12	20	3		1.42	2.09						52	
53							1.42	2.09	3	30	10	CONDENSING UNIT - 'C-2'	54	
55					0.00	2.09							56	
57	SPARE	-	15	3		0.00	0.00		-	-	-	SPACE	58	
59							0.00	0.00	-	-	-	SPACE	60	
TOTAL					24.62	21.26	19.77	kVA						
					205	177	165	AMPS						
PER NEC ARTICLE 220					65.66	kVA	182	AMPS						
NOTES: FURNISH w/ FEED-THRU LUGS, ISOLATED GROUND, & SOLID GROUND BUS. * LOAD SHOWN IS ADJUSTED BY 125% PER NEC IN THE FEEDER LOAD CALCULATION. ■ PROVIDE SHUNT TRIP TYPE CIRCUIT BREAKER. IG PROVIDE ISOLATED GROUND CONDUCTOR WITH THIS CIRCUIT. GFI PROVIDE A GFI TYPE CIRCUIT BREAKER. 1 KITCHEN LOAD SHOWN IS ADJUSTED BY 65% PER NEC IN THE FEEDER LOAD CALCULATION. 2 LOAD IS NON-SIMULTANEOUS TO OTHER KITCHEN EQUIPMENT AND IS NOT FIGURED IN FEEDER LOAD TOTALS.														

NEW PANEL "LK-6" SHALL BE OF PANELBOARD CONSTRUCTION. THE BASIS OF DESIGN IS ABB-GE RQ SERIES, 60 POLE PANELBOARD (THIS IS THE NEW VERSION OF THE A-SERIES II PANELBOARD) TO MATCH THE SPECIFICATION OF THE EXISTING TO BE REMOVED WITH THE EXCEPTION OF HAVING 60 POLES.

PANEL SCHEDULES 1

NOT TO SCALE E-601



- THE CONTRACTOR SHALL FIELD VERIFY ACTUAL CONDITIONS TO LOCATE WHERE THE PANEL SERVING THE PANDA EXPRESS SUITE IS SERVED FROM AND THE EXISTING FEEDERS & BREAKER SIZES PRIOR TO THE START OF WORK.
- THE PANELBOARDS ARE EXISTING TO REMAIN, UNO.
- ALL WIRE #8 AND SMALLER TO BE THWN/THHN CU.; #6 AND LARGER TO BE XHHW CU.
- UNLESS NOTED, ALL DEVICES AND TERMINATIONS 100 AMPS AND LESS TO BE RATED FOR 60°C WIRE, OVER 100 AMPS, 75°C WIRE.

SINGLE LINE DIAGRAM GENERAL NOTES 4

NOT TO SCALE E-601

- EXISTING PANEL "LK-6" SHALL BE DISCONNECTED AND TURNED OVER TO BASE CIVIL ENGINEERING. THE CONTRACTOR SHALL FURNISH & INSTALL THE NEW PANEL. THE CONTRACTOR SHALL FIELD VERIFY THE EXISTING DISCONNECT AND FEEDER THE PANEL IS FED FROM. FURNISH w/ THREE (3) NEW 200A TYPE "RK-1" FUSES AND CIRCUIT WITH, MINIMUM 4#30, 1#6EG., 1#6IG. CU., 2"C. THE EXISTING FEEDER MAY BE REUSED IF IN GOOD CONDITION, APPROVED BY BASE CIVIL ENGINEERING, AND MEETS THE MINIMUM FEEDER SIZE REQUIRED.

SINGLE LINE DIAGRAM KEYED NOTES 3

NOT TO SCALE E-601

EXISTING SINGLE LINE DIAGRAM 2

NOT TO SCALE E-601

BID SET - 2021/06/28