

PM 4743

MAP BR 159

PG 64

PARCEL MAP 4743

A SUBDIVISION OF PARCEL 1 OF PARCEL MAP NO. 4476

IN THE CITY OF UNION CITY
ALAMEDA COUNTY CALIFORNIA
SCALE: 1" = 100'
DECEMBER 1985



BASIS OF BEARINGS

The bearing N00°16'53"E of the centerline of Dowe Avenue as shown on the Parcel Map 1067, recorded in Book 83 of Parcel Maps at pages 2 & 3, Alameda County Records, was taken as the basis of bearings for this map.

NOTE AND LEGEND

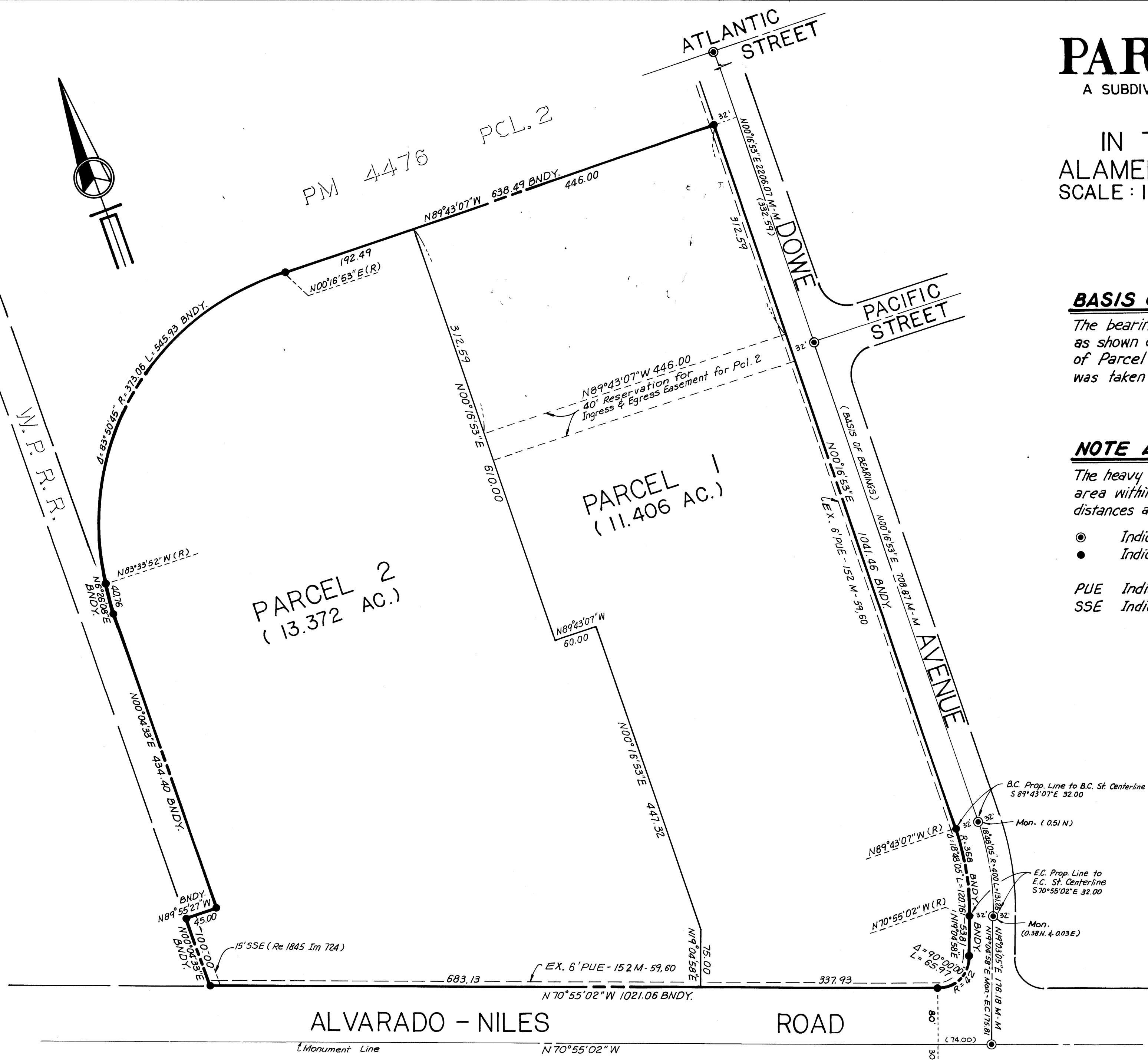
The heavy broken line indicates the boundary of land. The area within the heavy broken line is 24.778 acres. All distances and dimensions are shown in feet and decimals thereof.

- Indicates standard City Monument of record.
- Indicates 3/4" Iron Pipe of record.

PUE Indicates Public Utility Easement.
SSE Indicates Sanitary Sewer Easement.

★ USE WITH CAUTION
THIS IS A PRELIMINARY MAP
WORKING COPY. AN OFFICIAL MAP
ON FILE IN THE OFFICE OF THE COUNTY
RECORDS, COUNTY OF ALAMEDA, OF
RECORD MAP NO. 4743, MAY HAVE BEEN ADDED HEREON.

MacKay & Somo
CIVIL ENGINEERS
2610 CENTRAL AVENUE
UNION CITY CALIFORNIA



Series # 86-065185

SHEET 2 OF 2 SHEETS

10482-0

filed 3-20-86

159/64