

# CORNER RECORD

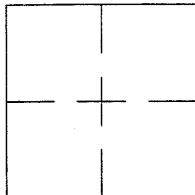
96-51 4 Cr 51

Document Number CR 700

City of SAN LORENZO

County of ALAMEDA, California

Brief Legal Description STREET MONUMENT. PIN IN CONC POST. VIA ALAMITOS & VIA ESPERANZA.



## CORNER TYPE

Government Corner ☐ Control ☐  
 Meander ☐ Property ☐  
 Rancho ☐ Other ☒  
 Date of Survey JULY 7, 1993

## COORDINATES (Optional)

N. \_\_\_\_\_  
 E. \_\_\_\_\_  
 Zone \_\_\_\_\_ Datum \_\_\_\_\_  
 Elev. \_\_\_\_\_

Corner - Left as found ☒ Found and tagged ☐ Established ☐ Reestablished ☐ Rebuilt ☐

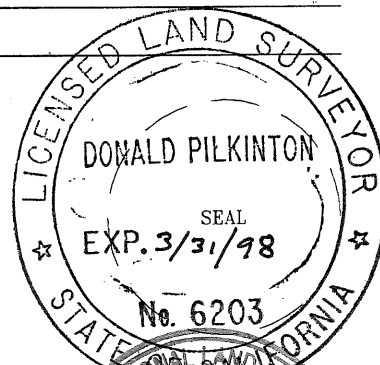
Identification and type of corner found: Evidence used to identify or procedure used to establish or reestablish the corner:  
THE MONUMENT DESCRIBED BELOW WAS REFERENCED BY USING INTERSECTING LINES. THE  
ENDS OF THE LINES WERE ESTABLISHED BY CHISELED CROSSES IN CONCRETE. TWO OF THE  
CROSSES ARE LOCATED ON THE TOP OF CURB NEAR THE CURB RETURNS. THE OTHER TWO  
ARE LOCATED ON THE SIDEWALK.

A description of the physical condition of the monument as found and as set or reset: A PIN IN CONC. POST WAS  
FOUND IN GOOD CONDITION AT THE CENTERLINE INTERSECTION OF VIA ALAMITOS AND VIA  
ESPERANZA. THE MONUMENT WAS IN A MONUMENT WELL BUT WAS IN DANGER OF BEING  
DESTROYED DUE TO STREET CONSTRUCTION.

## SURVEYOR'S STATEMENT

This Corner Record was prepared by me or under my direction in conformance with  
 the Land Surveyors' Act on JANUARY 2, 19 96.

Signed Donald C. Pilkinton S. or R.C.E. Number L.S. 6203



## COUNTY SURVEYOR'S STATEMENT

This Corner Record was received 1-8. 19 96 and examined  
 and filed 3-18. 19 96.

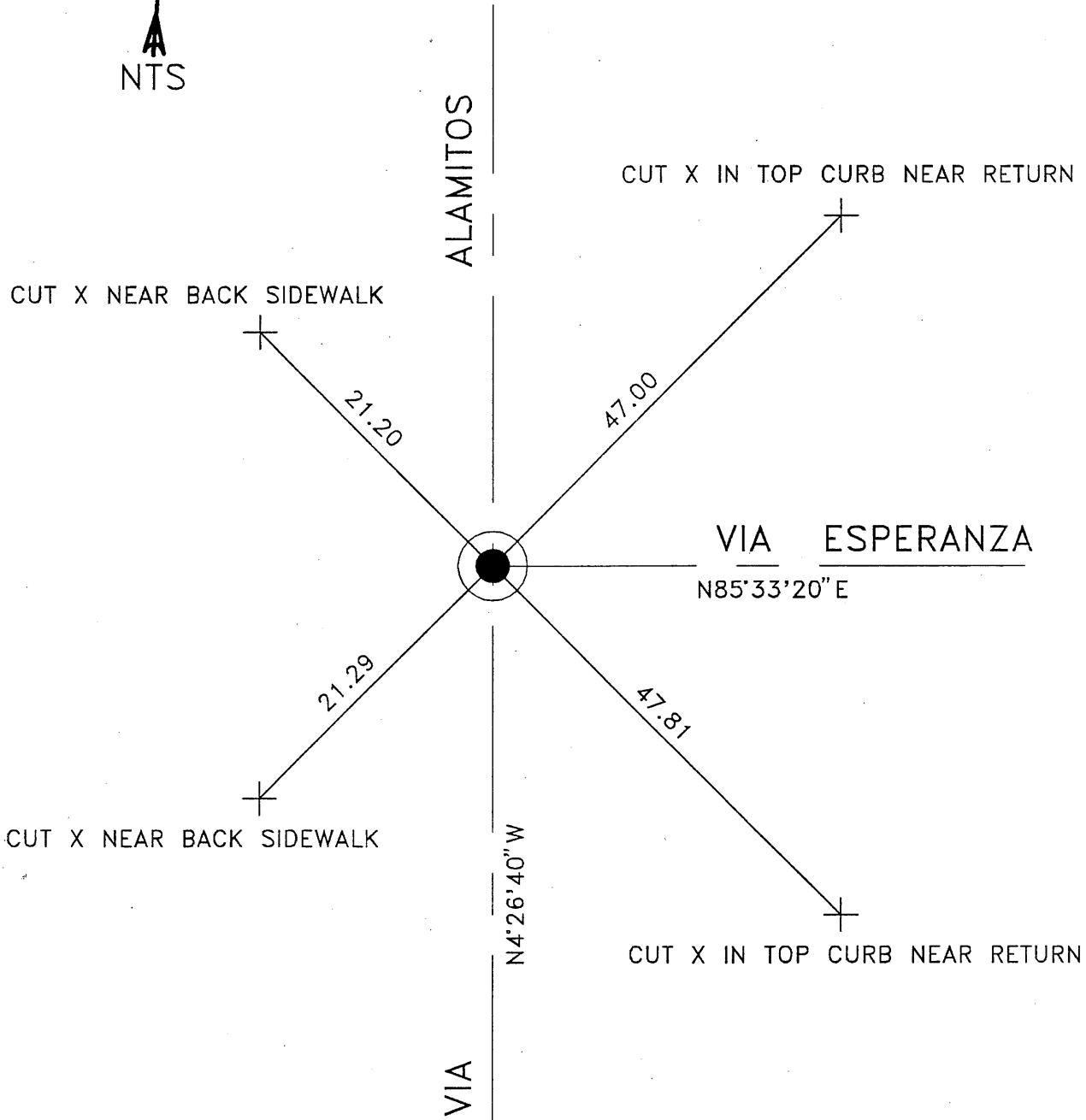
Signed Russell R. Penland, Jr. Title Deputy County Surveyor



Expiration Date: \_\_\_\_\_

County Surveyor's Comment \_\_\_\_\_

4305-1505



REFERENCE: TRACT NO. 788, BOOK 27-PAGE 62.

FIELD NOTES LL-2014-8.