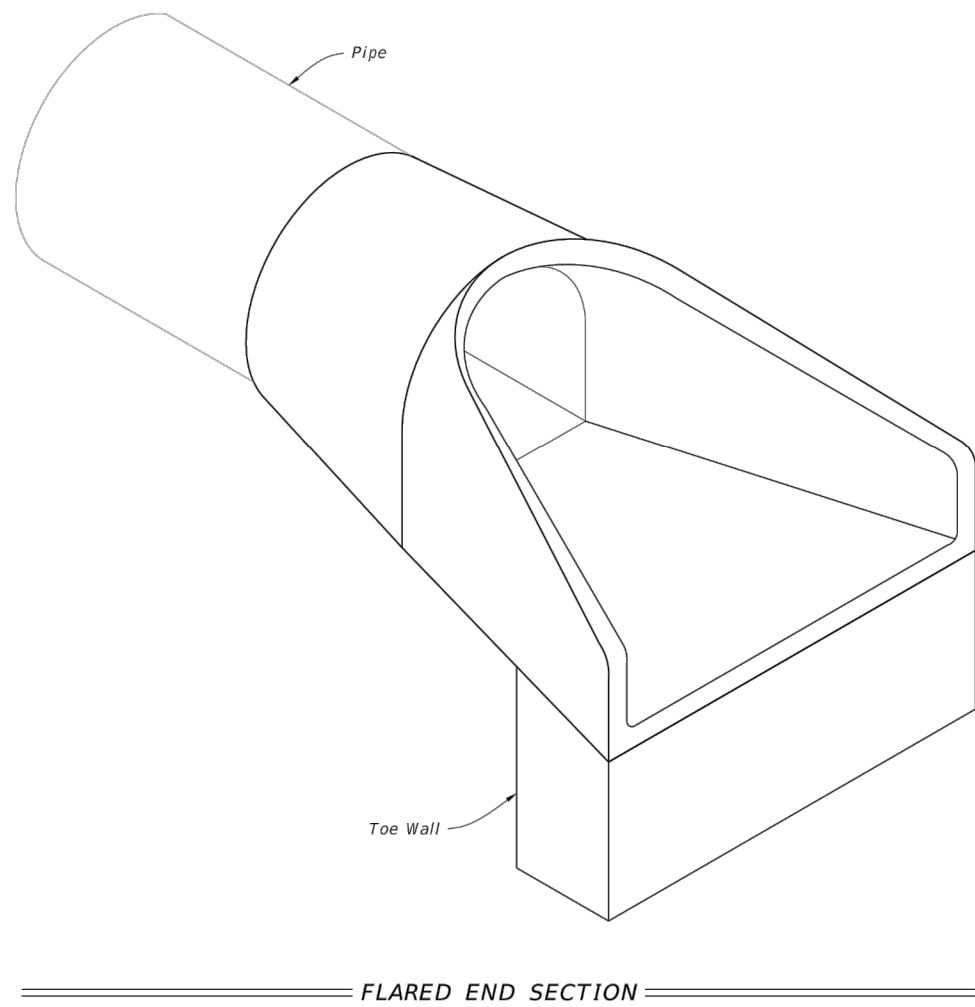


\\D:\R3\MDrive\Projects\NTR\2021110707\CS+0.dwg, 1/28/2022 11:39:48 AM, Ryan Brady

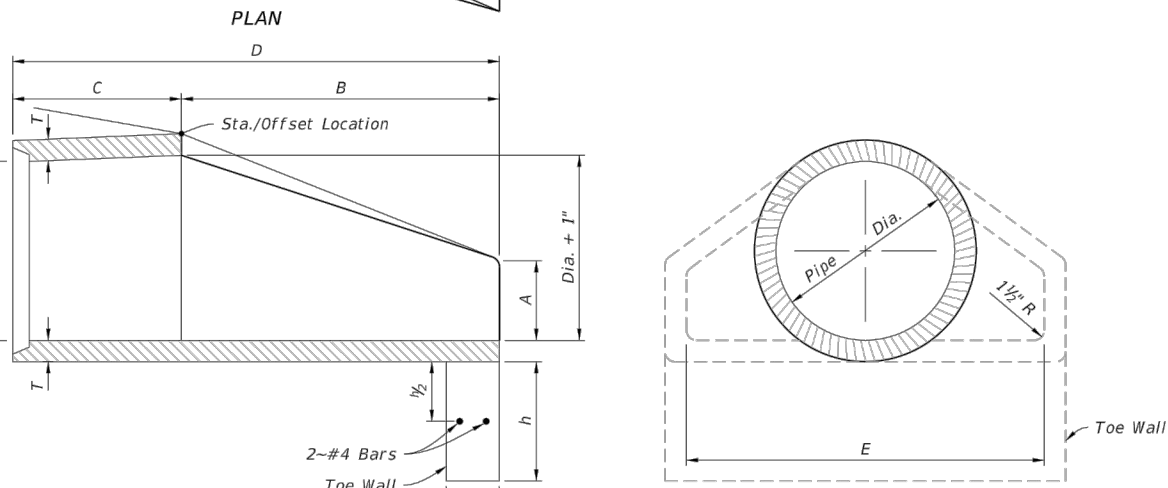
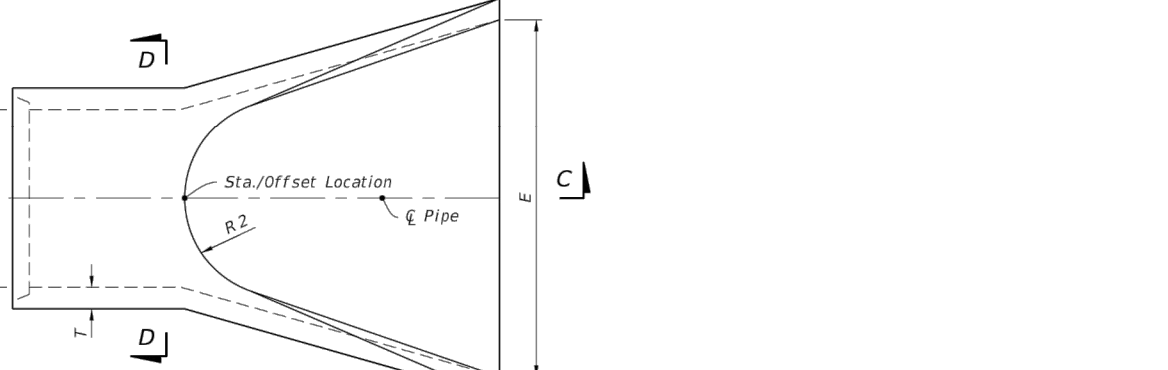
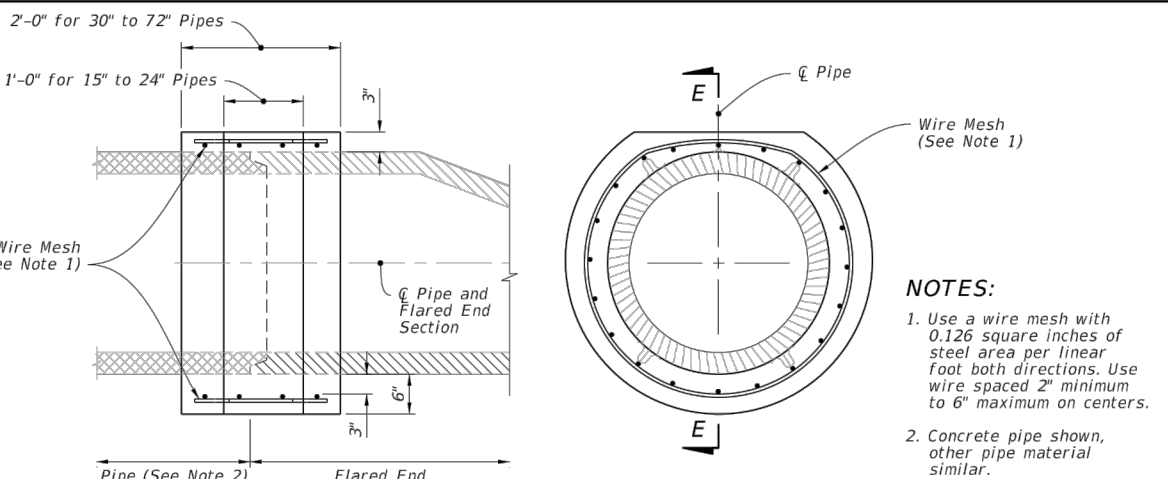
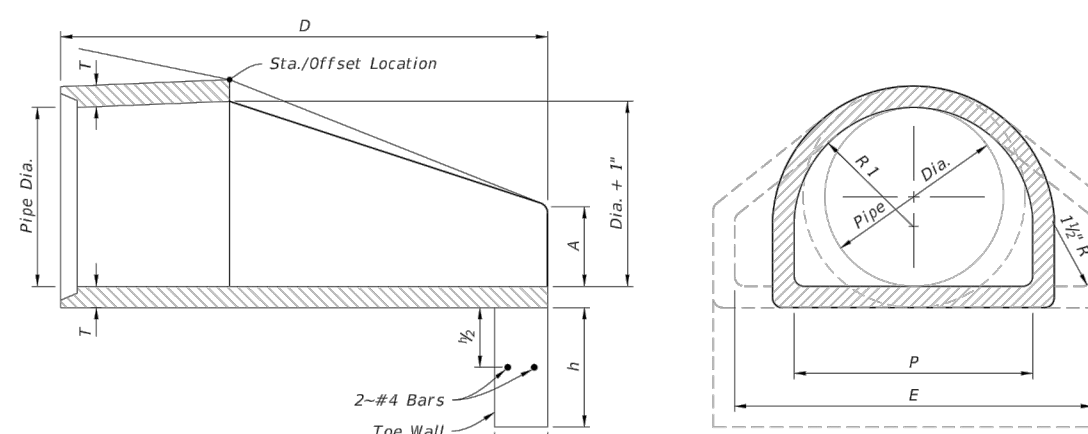
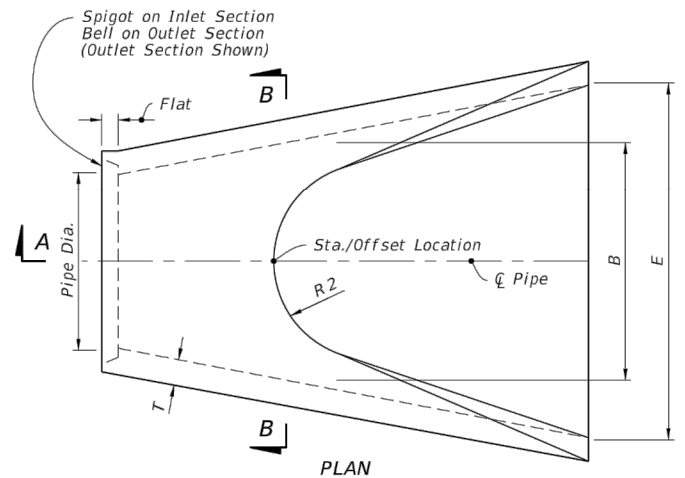
- GENERAL NOTES:**
1. Provide flared end sections meeting the requirements of ASTM C76 with the exception that dimensions and reinforcement meet the criteria in the table on sheet 2. Circumferential reinforcement may consist of either one cage or two cages of steel. Use concrete compressive strength of 4000 psi.
 2. Connections between the flared end section and the pipe culvert may be any of the following types unless otherwise shown on the plans.
 - a. Joints meeting the requirements of Section 449 of the Standard Specifications (O-Ring Gasket). Flared end section joint dimensions and tolerances shall be identical or compatible to those used in the pipe culvert joint. When pipe culvert and flared end section manufacturers are different, the manufacturer of the flared end sections must certify the compatibility of joint designs.
 - b. Joints sealed with preformed plastic gaskets. Use gaskets that meet the requirements Specification 942-2 of the Standard Specifications and the minimum sizes for gaskets as specified for equivalent sizes of elliptical pipe.
 - c. Reinforced concrete jackets, as detailed on sheet 2. When non-coated corrugated metal pipe is called for in the Plans, use bituminous coated pipe in the jacketed area as specified on Index 430-001. Construct concrete jacket as specified in Index 430-001.
 3. Toe walls are to be cast-in-place using Class I Concrete.
 4. On skewed pipe culverts place the flared end sections in line with the pipe culvert. Warp the side slopes as required to fit the flared end sections.
 5. Quantities shown are for estimating purposes only.

TABLE OF CONTENTS:	
Sheet	Description
1	General Notes and Contents
2	Straight Flare, Optional Shape Details, and Reinforced Concrete Jacket Detail



LAST REVISION 11/01/19	DESCRIPTION: REVISED	FDOT FY 2021-22 STANDARD PLANS	FLARED END SECTION	INDEX 430-020	SHEET 1 of 2
---------------------------	-------------------------	--------------------------------------	--------------------	------------------	-----------------

Pipe Dia.	T	Reinf. Req. in Per Foot	Bell or Spigot	A	B	C	D	E	P	R 1	R 2	FLAT	h	Toe Wall Class I Conc. (CY)
12"	2"	0.07	1 1/2"	4"	2'-0"	4'-0 1/2"	6'-0 1/2"	2'-0"	19 3/4"	10 1/2"	9"	3 1/2"	12"	.06
15"	2 1/2"	0.07	2"	6"	2'-3"	3'-10"	6'-1"	2'-0"	24 1/2"	12 1/2"	11"	3 1/2"	12"	.07
18"	2 1/2"	0.07	2 1/2"	9"	2'-3"	3'-10"	6'-1"	3'-0"	29"	13 1/2"	12"	4"	15"	.11
21"	2 1/2"	0.07	2 1/2"	9"	2'-11"	3'-2"	6'-1"	3'-0"	31 1/2"	16 1/2"	13"	4"	15"	.12
24"	3"	0.07	2 1/2"	9 1/2"	3'-7 1/2"	2'-4"	6'-1 1/2"	4'-0"	33 1/2"	18 1/2"	14"	4 1/2"	18"	.17
27"	3 1/2"	0.148	2 1/2"	10 1/2"	4'-0"	2'-1 1/2"	6'-1 1/2"	4'-0"	36"	18 1/2"	14 1/2"	4 1/2"	18"	.19
30"	3 1/2"	0.148	3"	1'-0"	4'-6"	1'-7 1/2"	6'-1 1/2"	5'-0"	37"	18 1/2"	15"	5"	21"	.24
36"	4"	0.148	3 1/2"	1'-3"	5'-3"	2'-10 1/2"	6'-1 1/2"	6'-0"	47 1/2"	24 1/2"	20"	5 1/2"	21"	.29
42"	4 1/2"	0.148	3 1/2"	1'-9"	5'-3"	2'-11"	8'-2"	6'-0"	53 1/2"	27 1/2"	22"	5 1/2"	24"	.36
48"	5"	0.148	4 1/2"	2'-0"	6'-0"	2'-2"	8'-2"	7'-0"	56 1/2"	28 1/2"	22"	5 1/2"	24"	.39
54"	5 1/2"	0.174	4 1/2"	2'-3"	5'-9"	2'-11"	8'-4"	7'-0"	63 1/2"	33 1/2"	24"	6 1/2"	24"	.42
60"	6"	0.174	5"	2'-6"	5'-0"	3'-3"	8'-3"	8'-0"	72 1/2"	36 1/2"	24"	6 1/2"	24"	.44
66"	6 1/2"	0.174	5 1/2"	2'-0"	6'-6"	1'-8"	8'-3"	8'-0"	72"	36"	24"	7 1/2"	24"	.47
72"	7"	0.174	6"	2'-0"	6'-0"	1'-9"	8'-3"	9'-0"	77 1/2"	38 1/2"	24"	7 1/2"	24"	.50



LAST REVISION 11/01/19	DESCRIPTION: REVISED	FDOT FY 2021-22 STANDARD PLANS	FLARED END SECTION	INDEX 430-020	SHEET 2 of 2
---------------------------	-------------------------	--------------------------------------	--------------------	------------------	-----------------

McADAMS
The John R. McAdams Company, Inc.
2905 Meridian Parkway
Durham, NC 27713

phone 919. 361. 5000
fax 919. 361. 2269
FL license number: 32983

www.mcadamsco.com

CLIENT
N3 REAL ESTATE
1240 N KIMBALL AVE
SOUTHLAKE, TX, 76092
PHONE: 817.348.8748

N3 REAL ESTATE

**STRICKLAND BROTHERS OIL
CHANGE - PACE
SITE PLAN SUBMITTAL**
4354 US HWY 90
PACE, FLORIDA 32571

RAY WATSON
No. 38427
ST
SIGNATURE

Ray Watson
Jan 28 2022 1:47 PM

REVISIONS

NO.	DATE
1	-
2	-
3	-
4	-
5	-
6	-

PLAN INFORMATION

PROJECT NO.	2021110707
FILENAME	2021110707-CS+D
CHECKED BY	NRW
DRAWN BY	RMB
SCALE	N/A
DATE	01.28.2022

SHEET

STORM DETAILS

C8.02