



PANDA RESTAURANT GROUP INC.
1683 Walnut Grove Ave.
Rosemead, California
91770
Telephone: 626.799.9898
Facsimile: 626.372.8288


All ideas, designs, arrangement and plans indicated or represented by this drawing are the property of Panda Express Inc. and were created for use on this specific project. None of these ideas, designs, arrangements or plans may be used by or disclosed to any person, firm, or corporation without the written permission of Panda Express Inc.

REVISIONS:		

ISSUE DATE:		
1	CHECK SET	10-23-20
2	PERMIT SET	03-15-21
3	BID SET	04-02-21

DRAWN BY: KTF / EJP

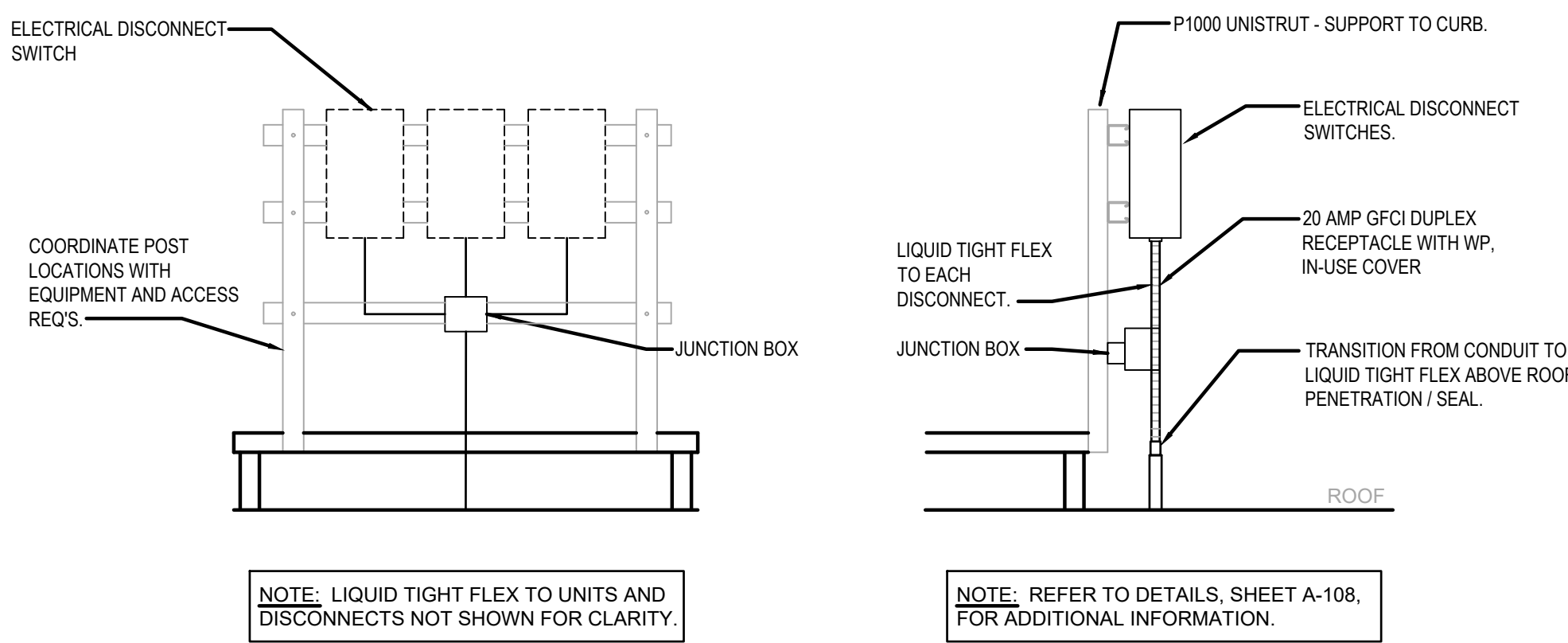
PANDA PROJECT #: S4-21-D7864
ARCH PROJECT #: P7350



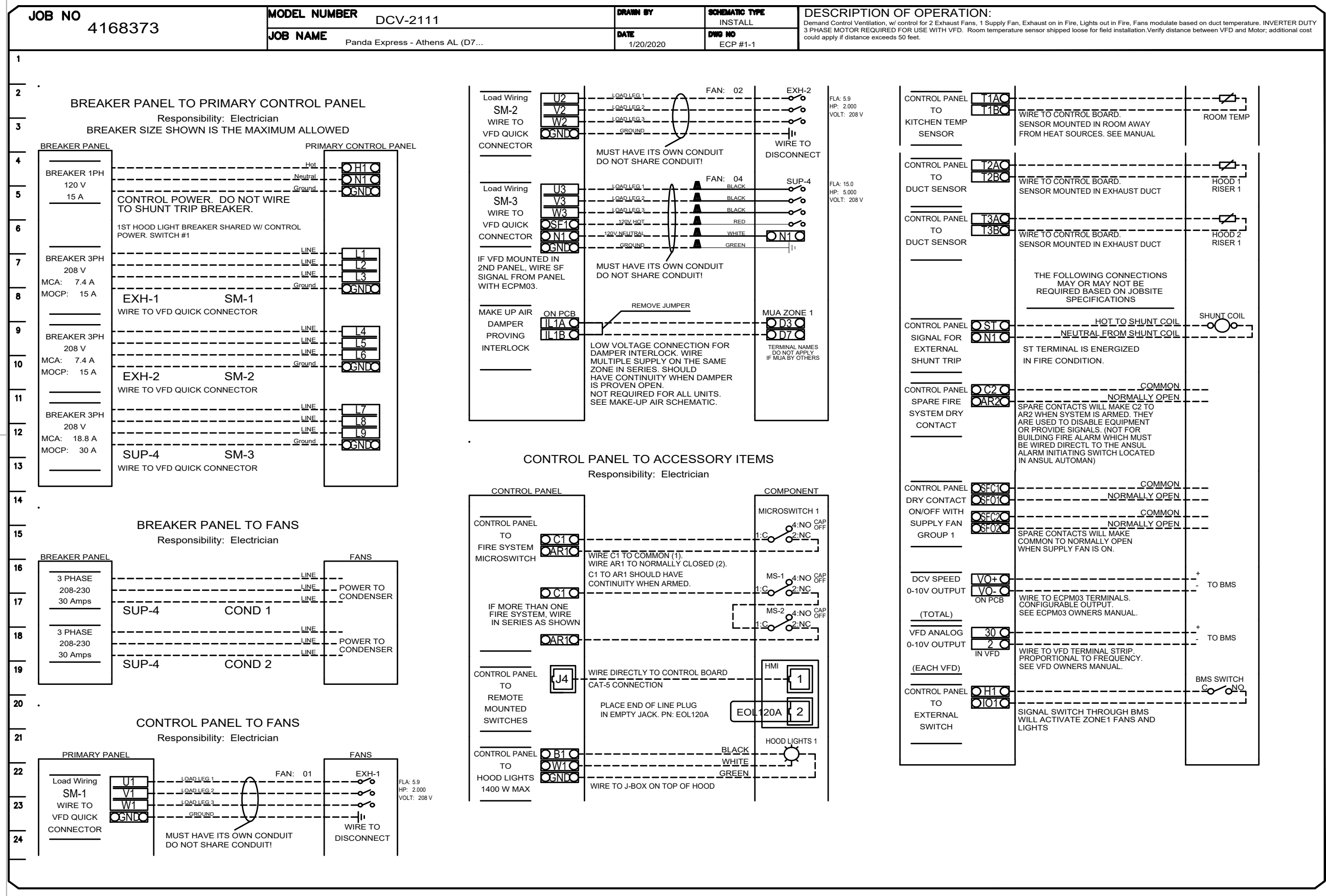
www.cphcorp.com
A Full Service A & E Firm

Plans Prepared By:
CPH Design, Inc.
500 West Fulton St.
Sanford, FL 32771
Ph: 407.322.6841
State of Virginia Licenses:
Engineer No. 407066317
Surveyor No. N/A
Architect No. 407066317
Landscape No. 407066317

PANDA EXPRESS
END CAP - TENANT BUILD OUT
4501 S LABURNUM AVE
RICHMOND VA, 23231



EQUIPMENT DISCONNECT SWITCH SUPPORT 2
NOT TO SCALE E-401



KITCHEN EXHAUST SYSTEM DIAGRAM 3
NOT TO SCALE E-401