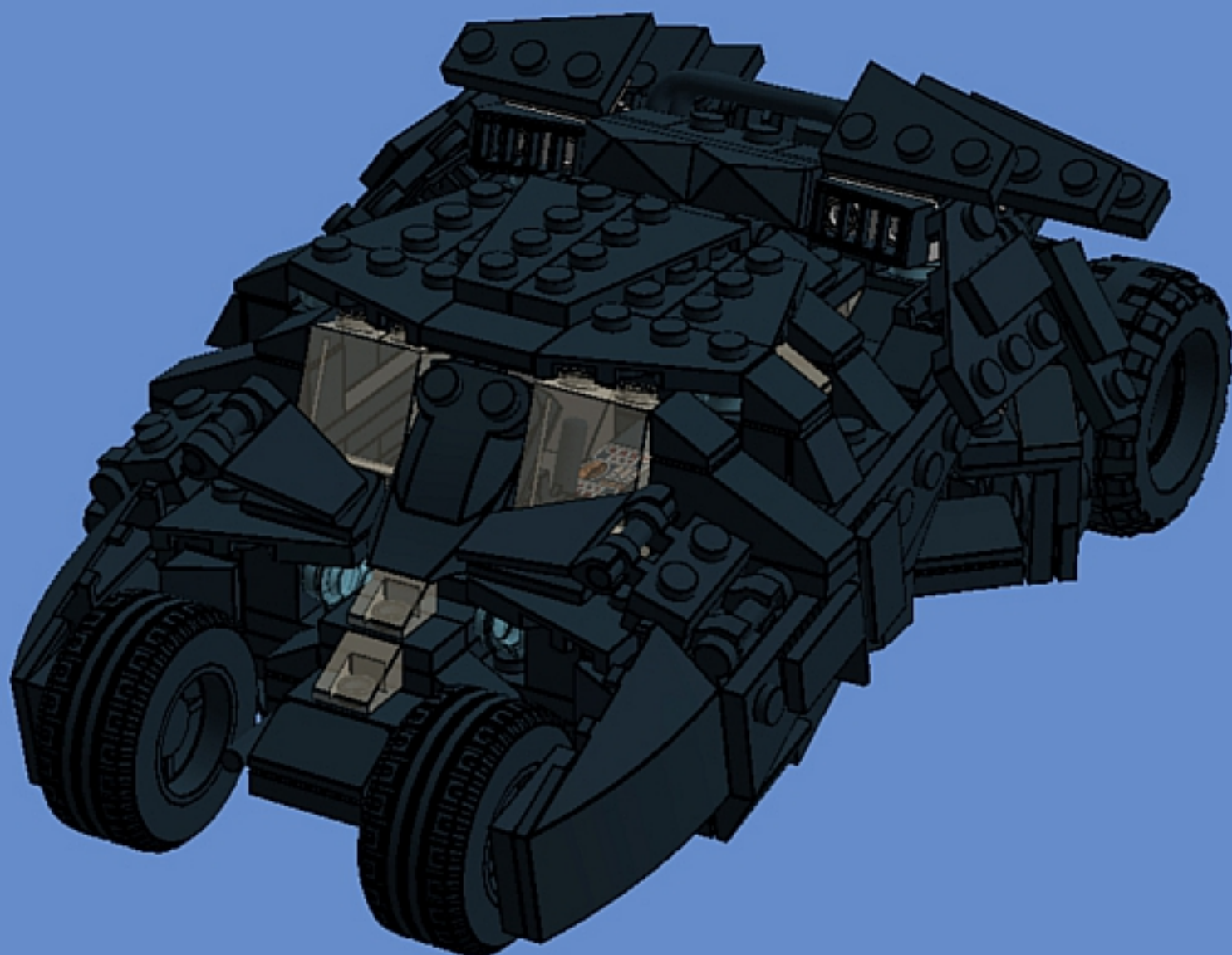


BATMAN 2 Seater Tumbler

By Buggyirk



*Includes instructions for alternate front axles and wheels



1 / 216



2 / 216





3 / 216



4 / 216

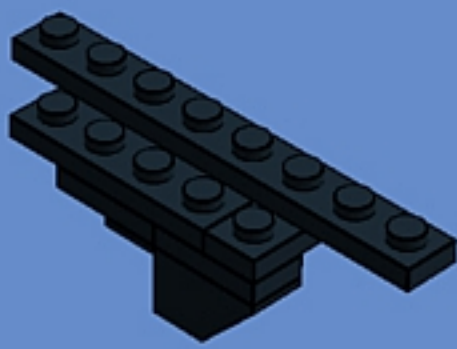


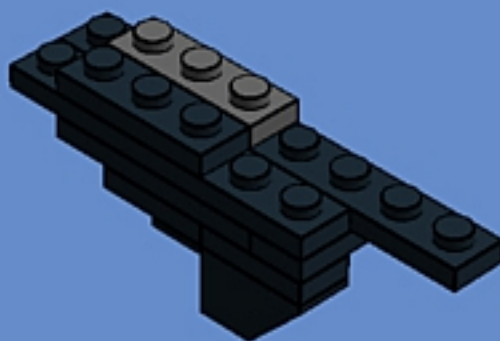
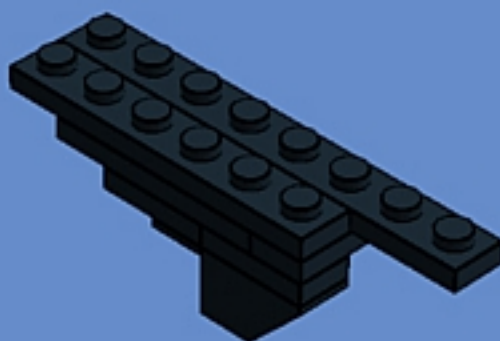


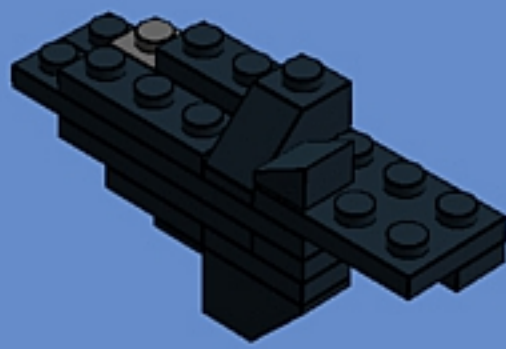
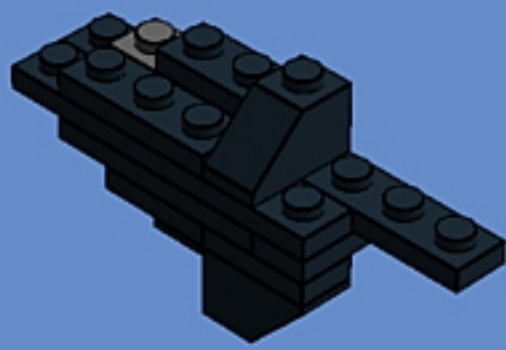
5 / 216



6 / 216

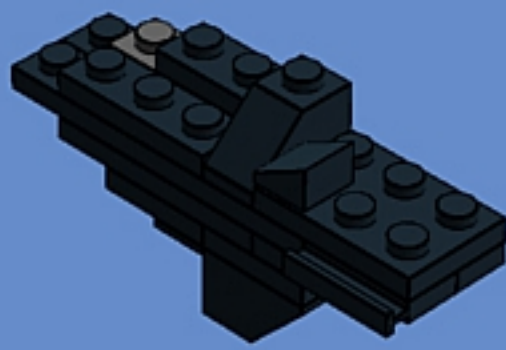




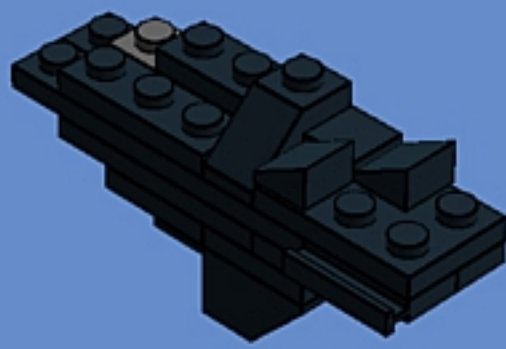




11 / 216

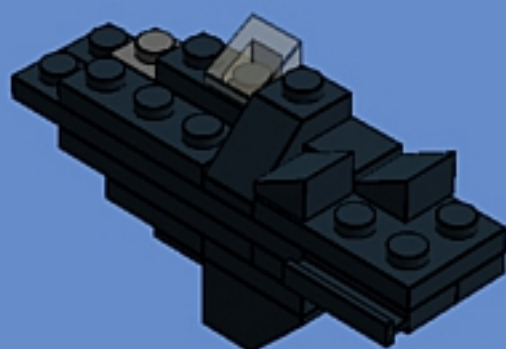


12 / 216

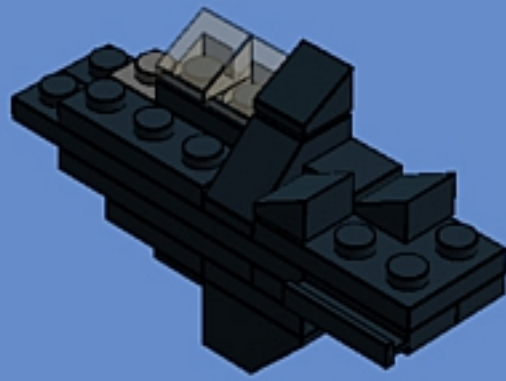




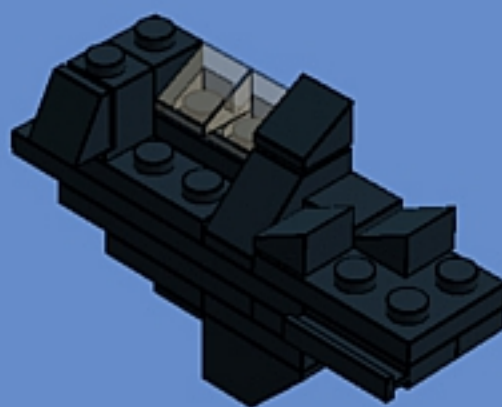
13 / 216



14 / 216

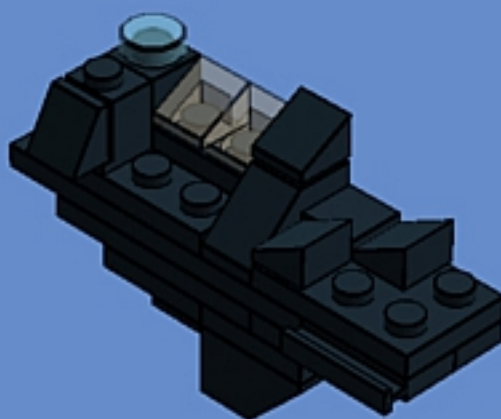




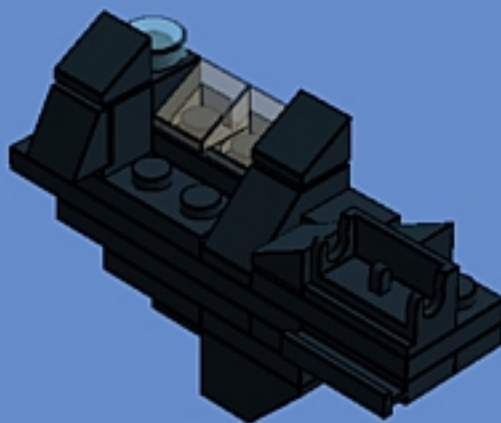




19 / 216



20 / 216

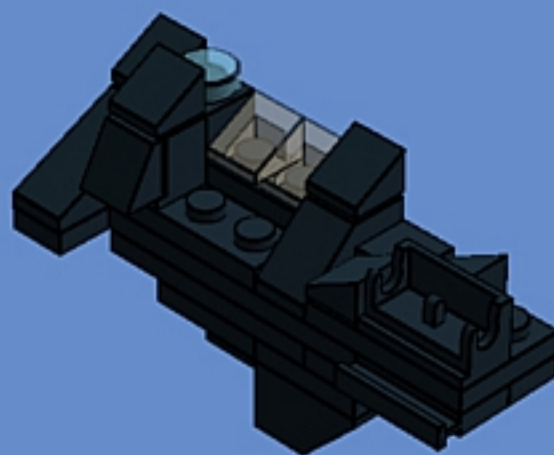


21 / 216

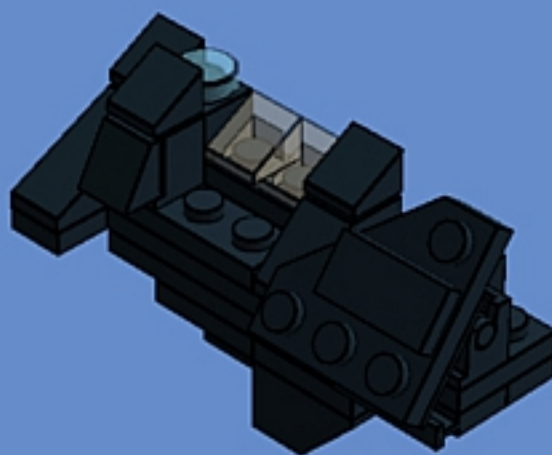


22 / 216



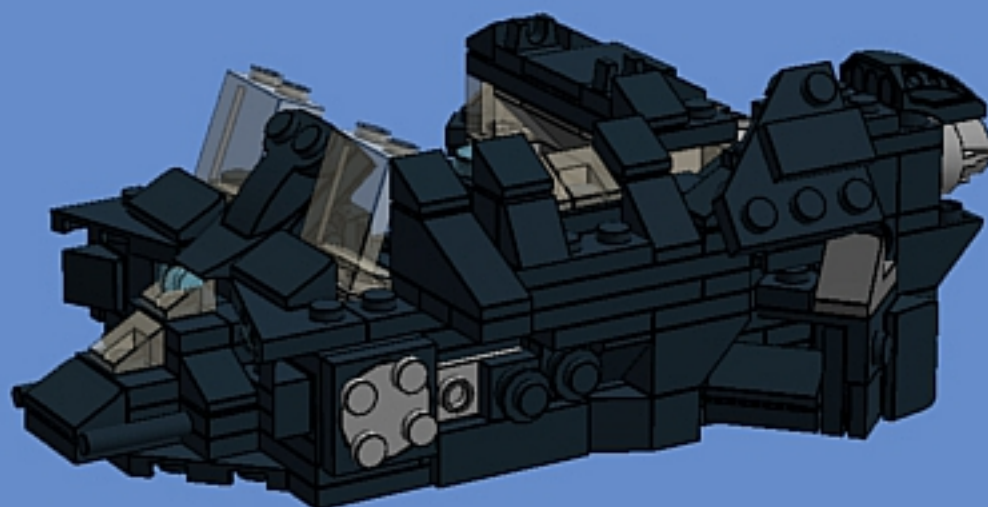








29 / 216



30 / 216





31 / 216



32 / 216



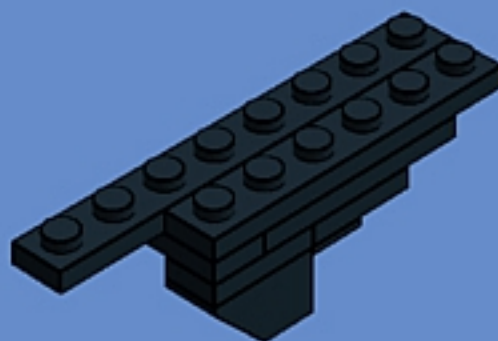
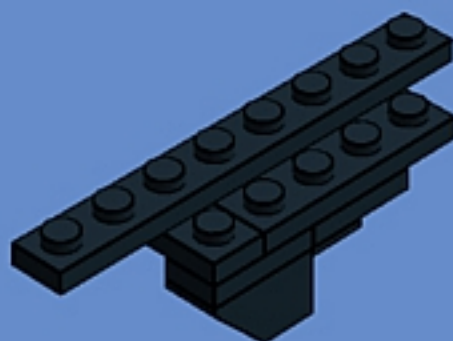


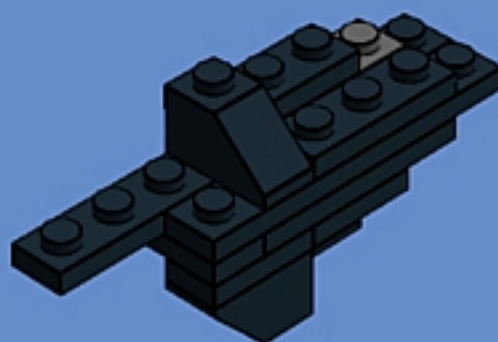
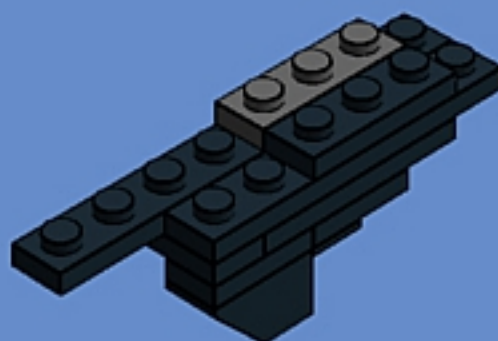
33 / 216



34 / 216

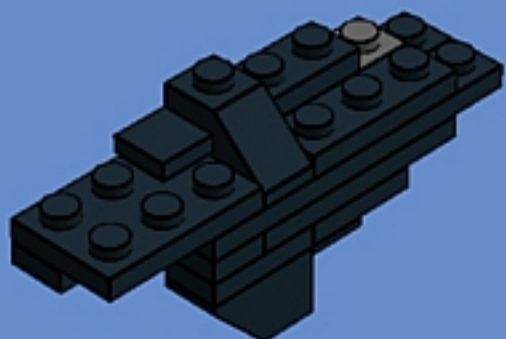




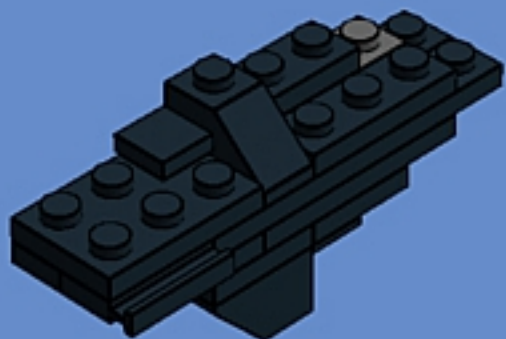


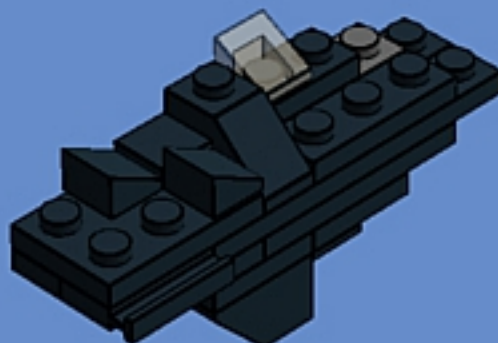
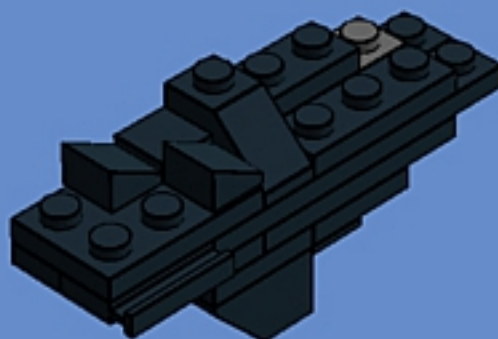


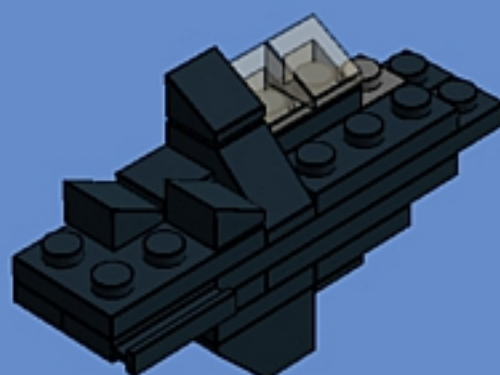
39 / 216



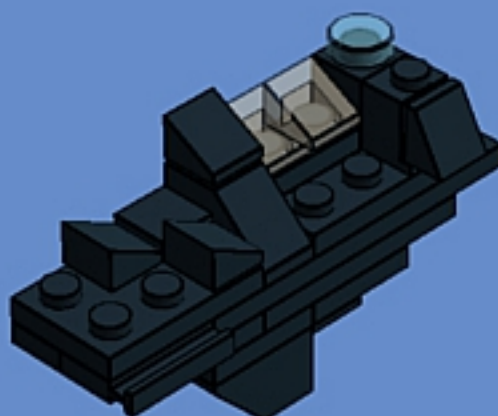
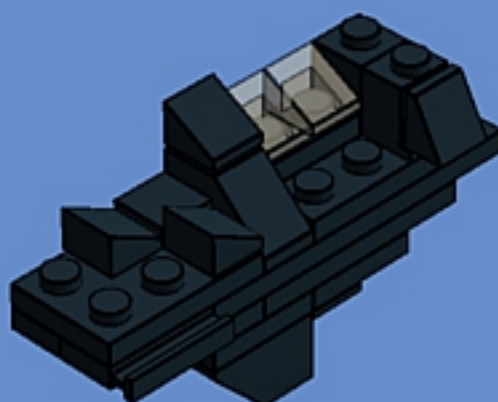
40 / 216

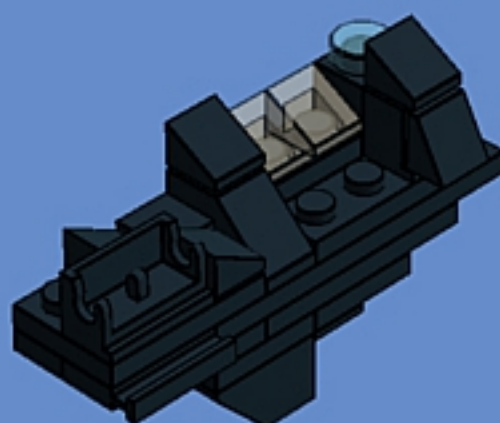




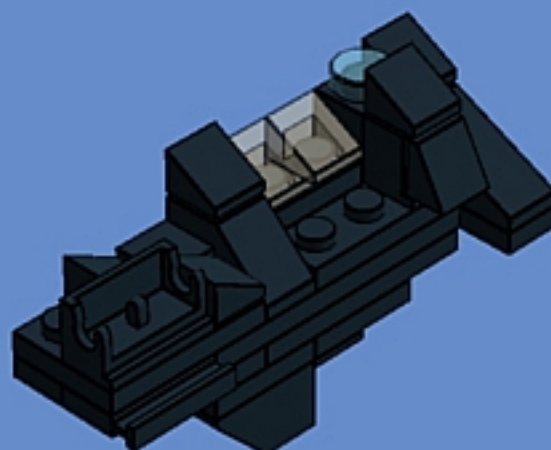








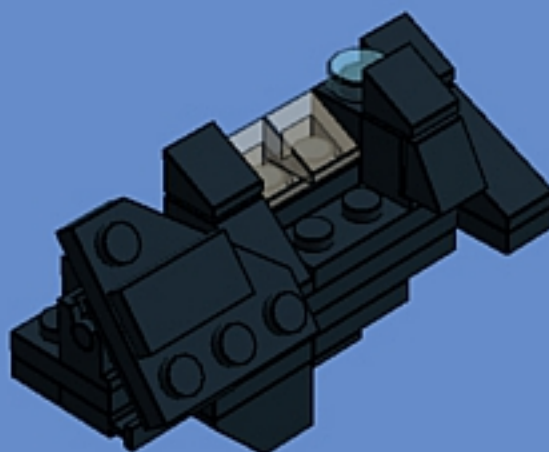




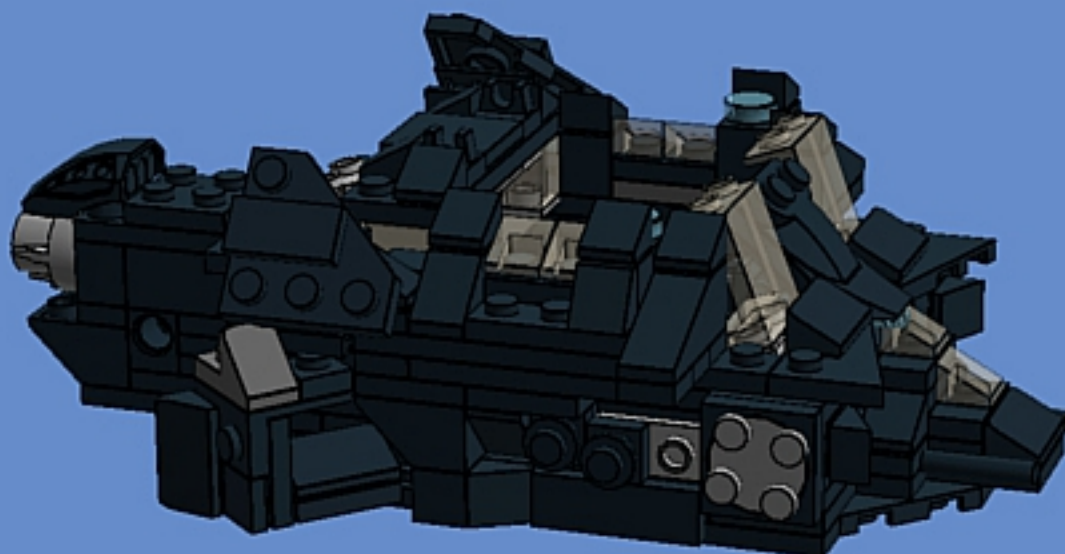




57 / 216



58 / 216







61 / 216



62 / 216







65 / 216



66 / 216



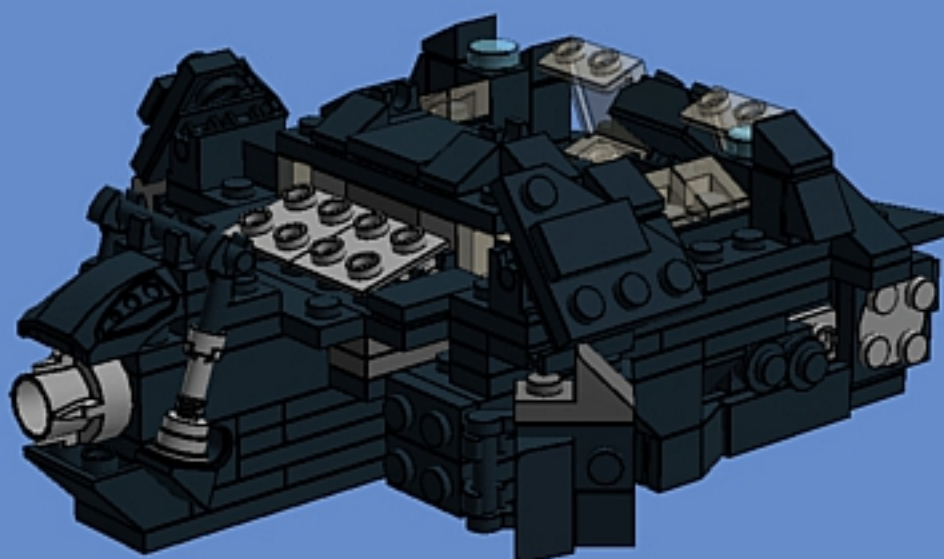








73 / 216

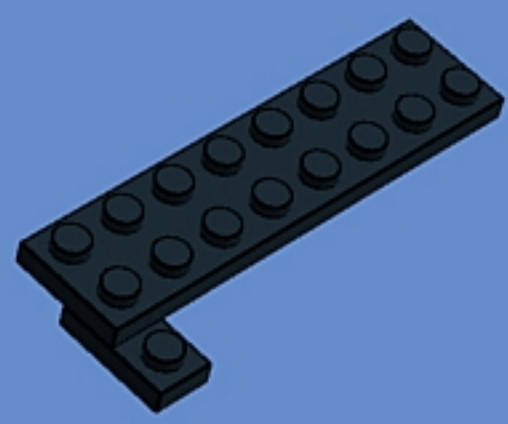


74 / 216

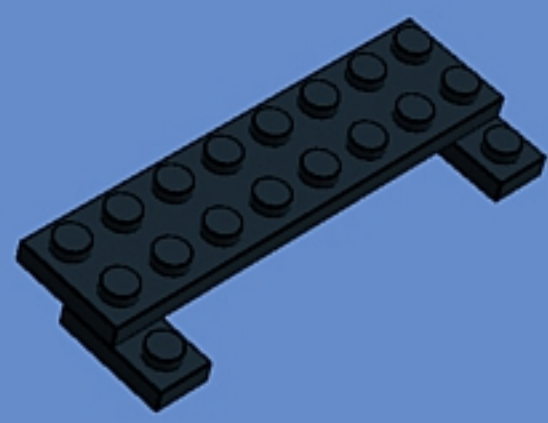




75 / 216

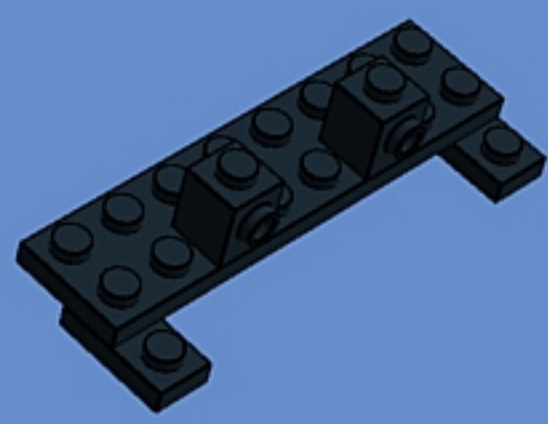


76 / 216

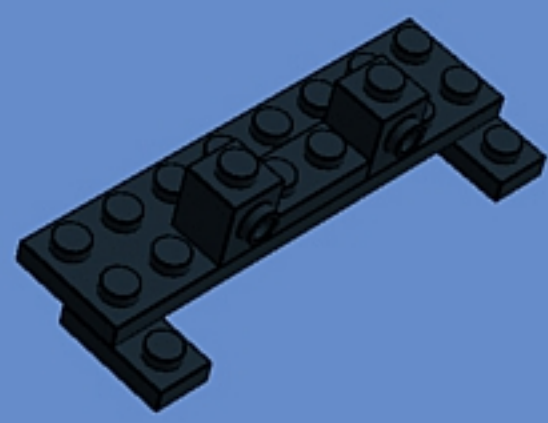




77 / 216

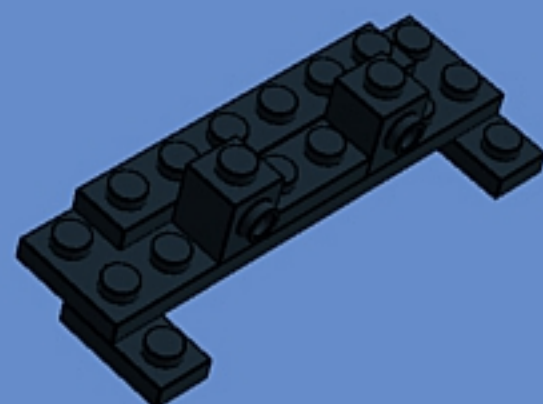


78 / 216

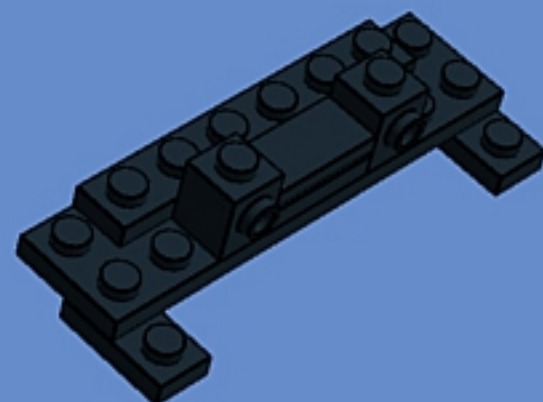




79 / 216

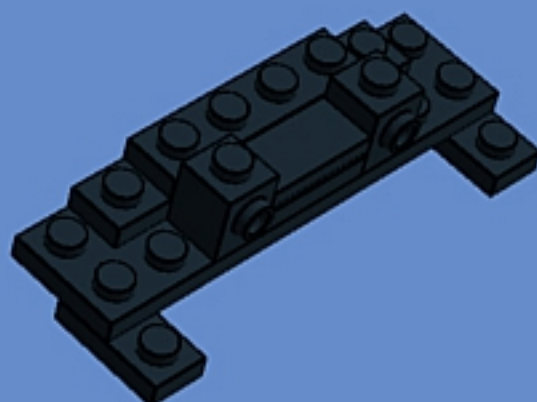


80 / 216

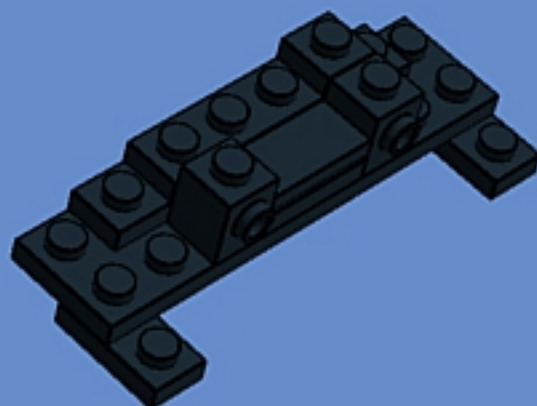


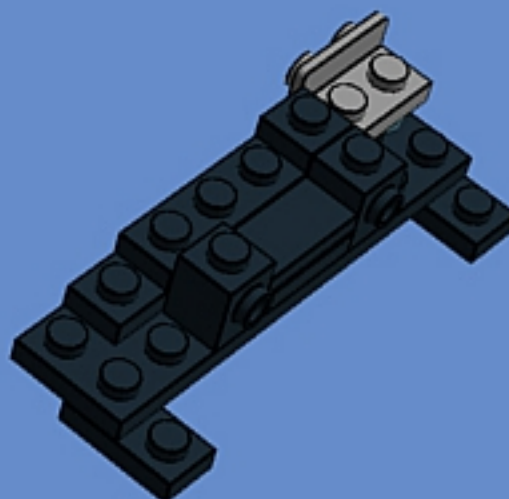
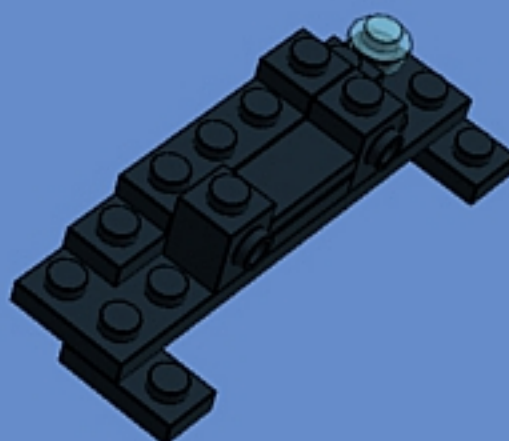


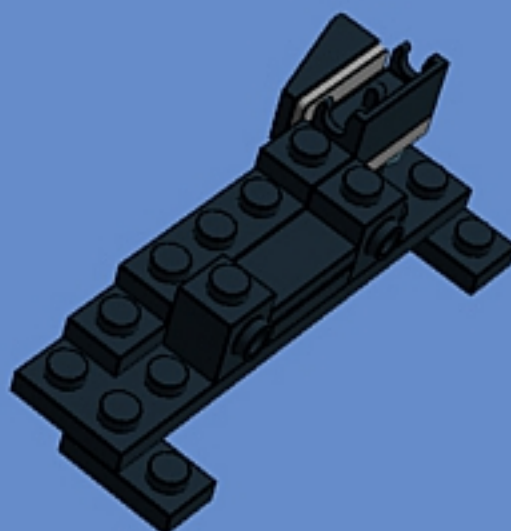
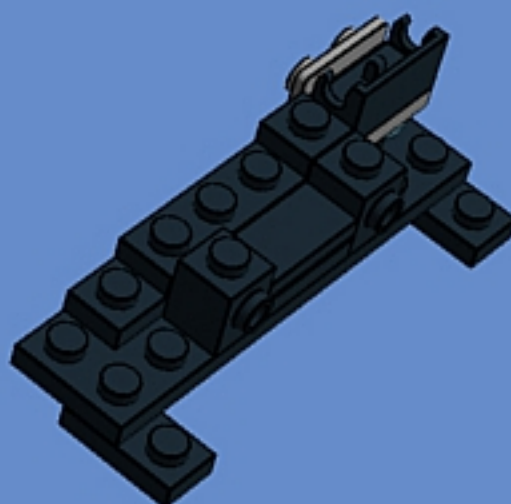
81 / 216

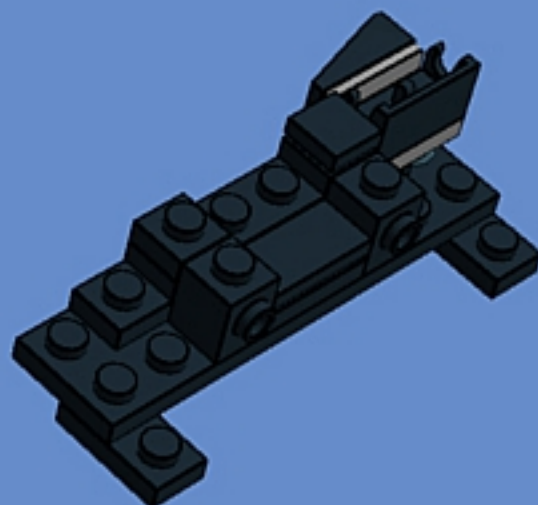
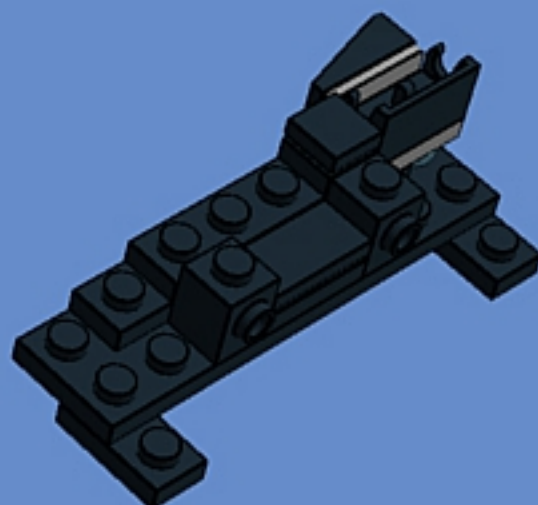


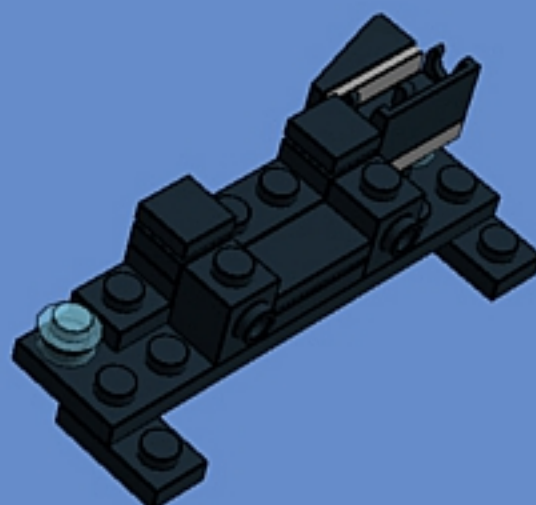
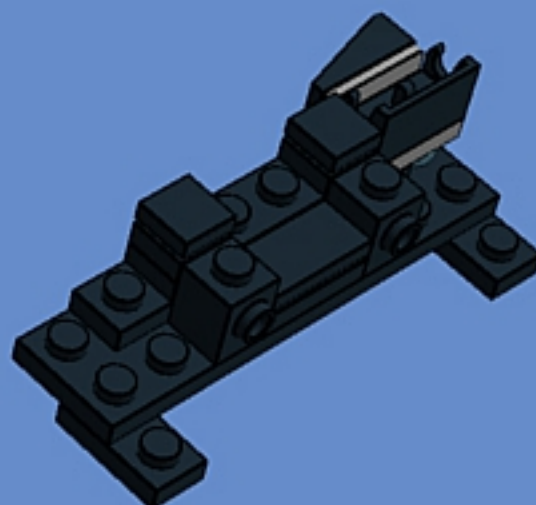
82 / 216

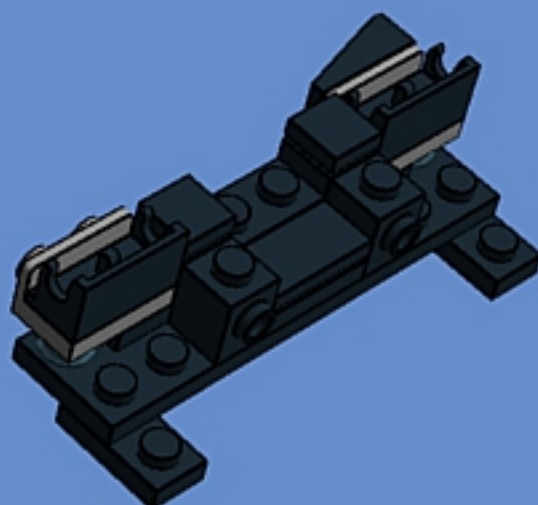
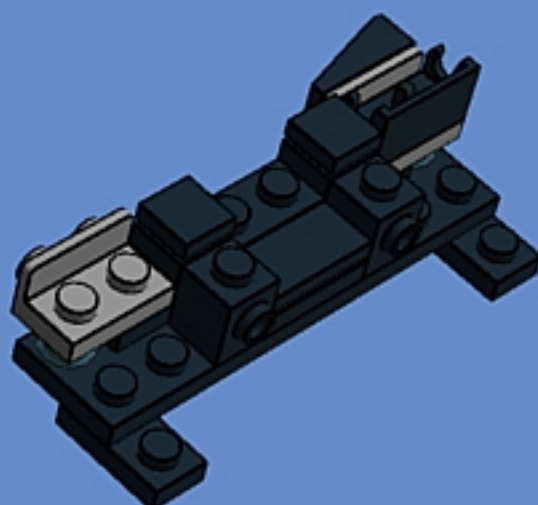


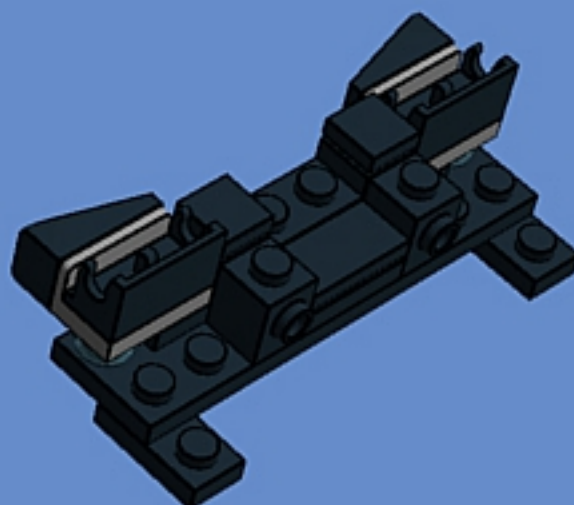


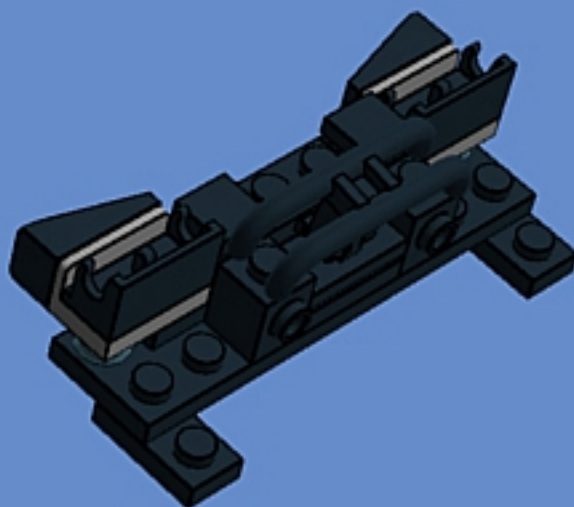








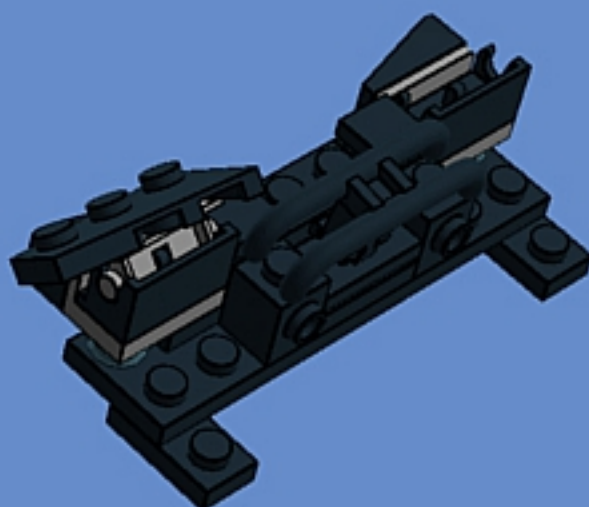








99 / 216



100 / 216

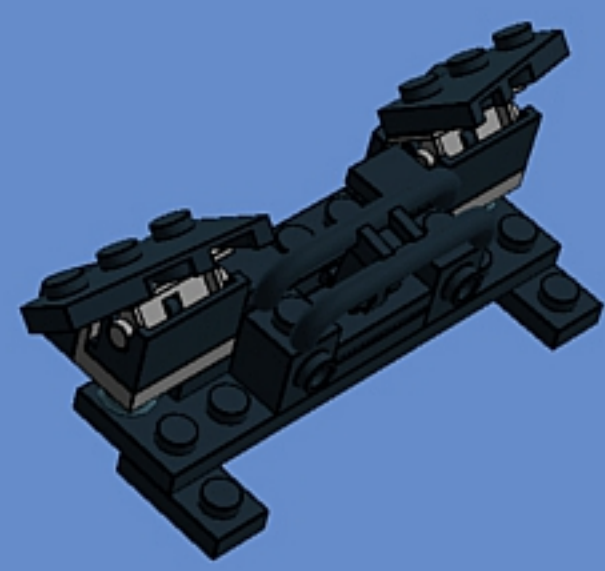




101 / 216



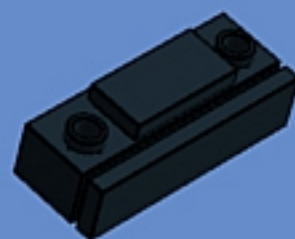
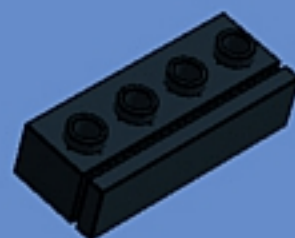
102 / 216





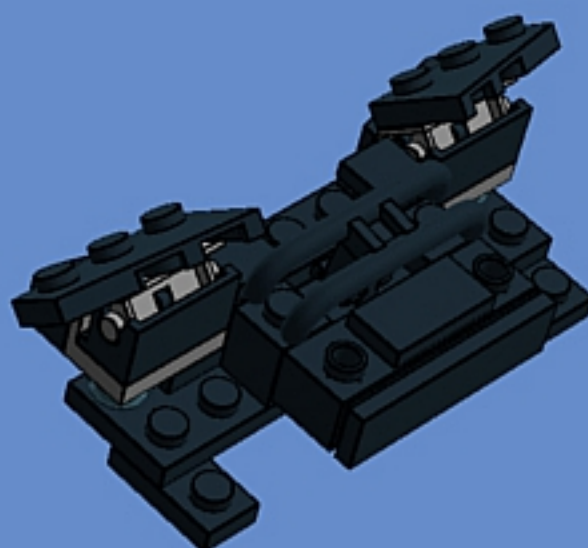
=







107 / 216



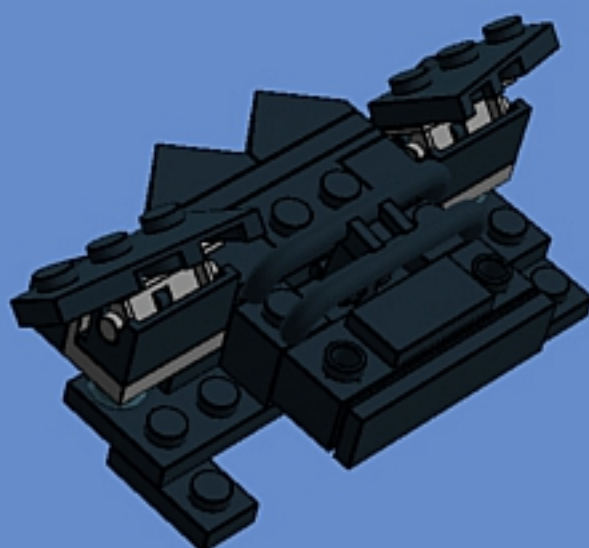
108 / 216







111 / 216



112 / 216



113 / 216



114 / 216









121 / 216



122 / 216





123 / 216



124 / 216





125 / 216



126 / 216





127 / 216



128 / 216





129 / 216



130 / 216









135 / 216



136 / 216







139 / 216



140 / 216

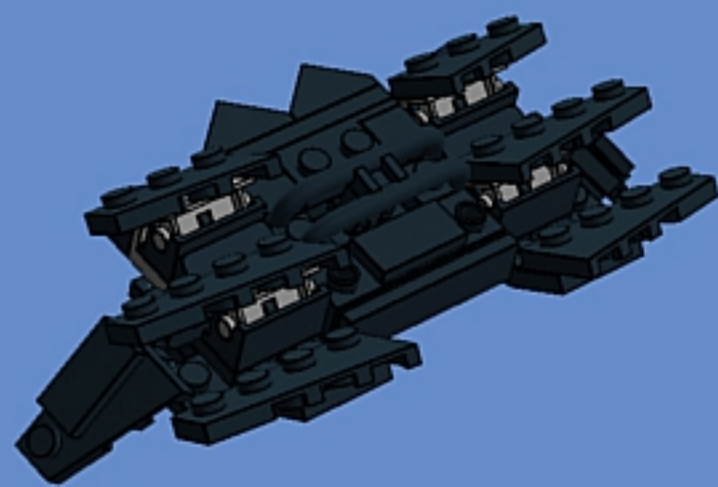




141 / 216



142 / 216





143 / 216



144 / 216





145 / 216



146 / 216





147 / 216



148 / 216





149 / 216



150 / 216







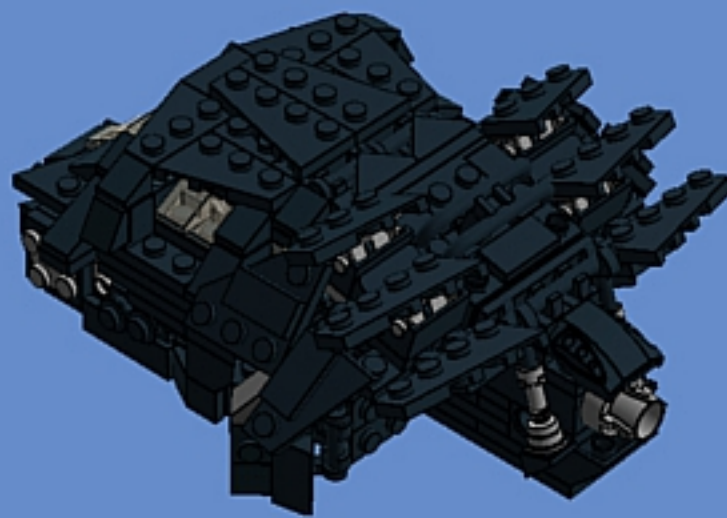




157 / 216

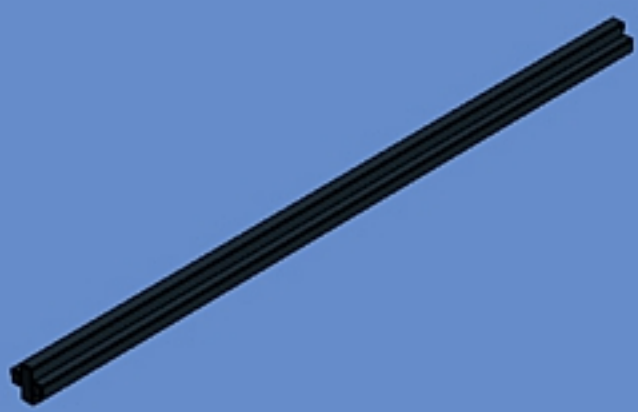


158 / 216

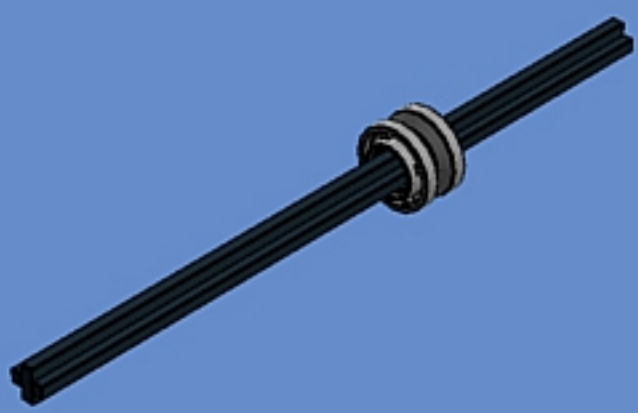




159 / 216

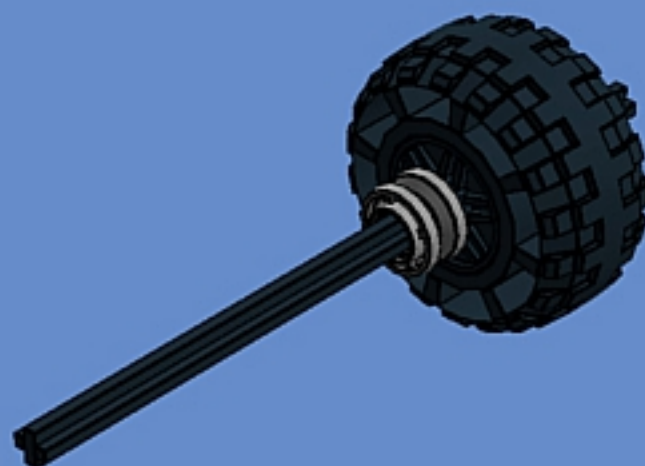


160 / 216



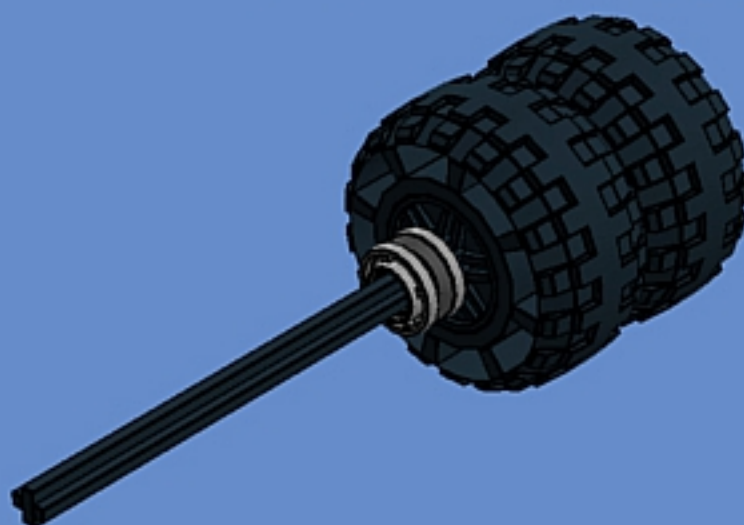


163 / 216



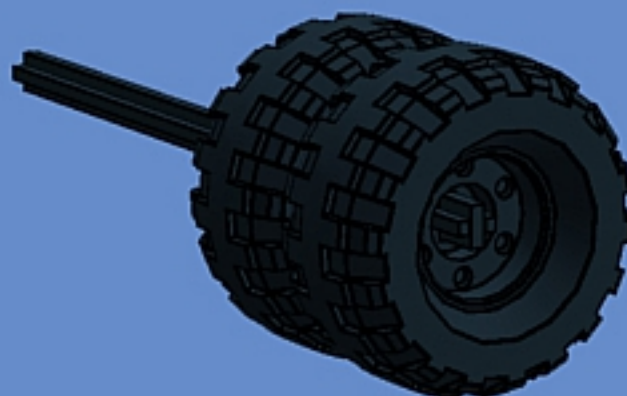
164 / 216







167 / 216

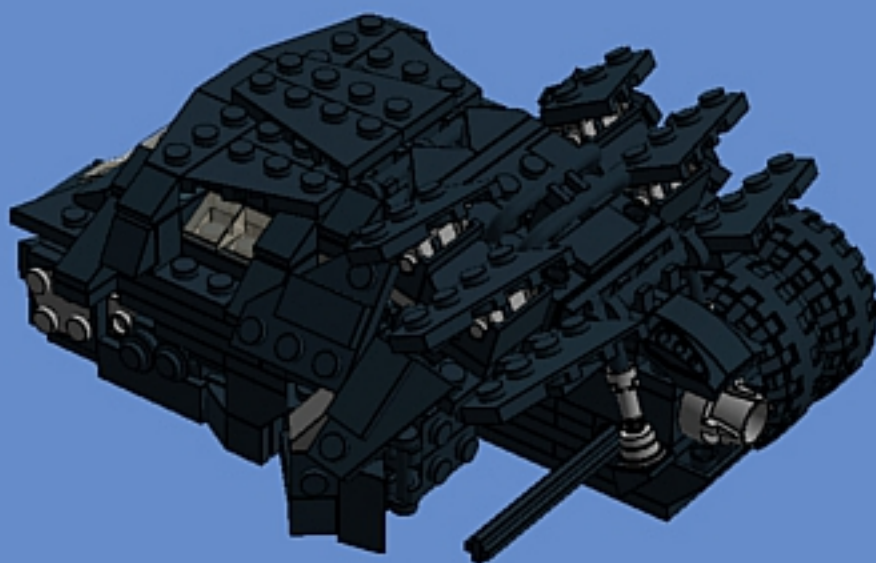


168 / 216

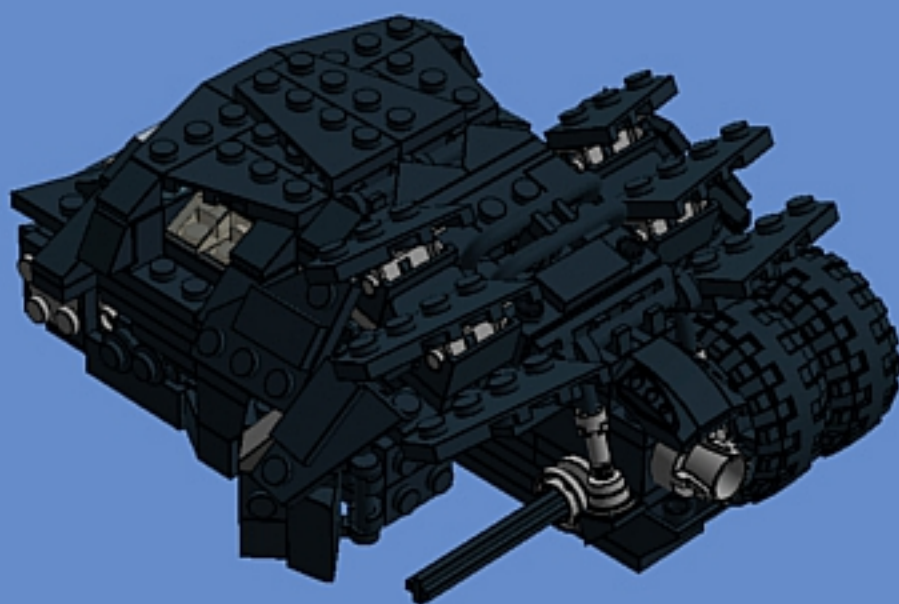




169 / 216

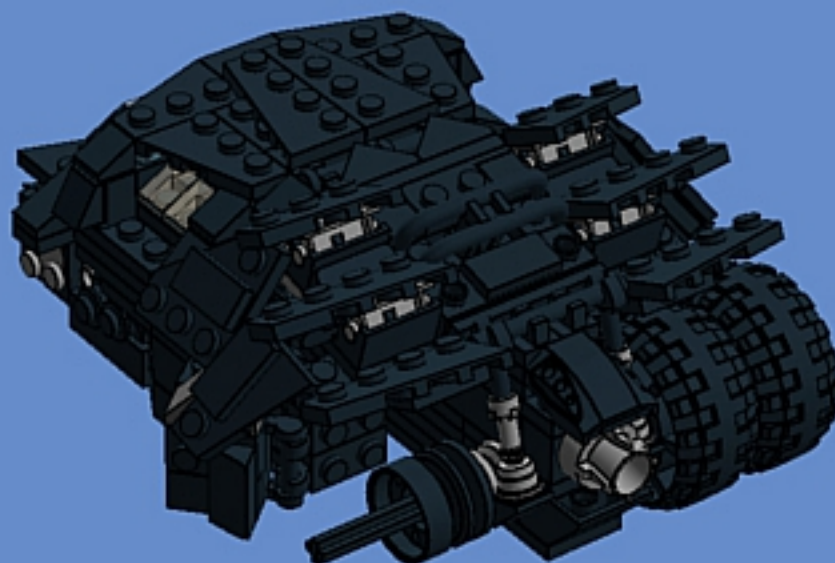


170 / 216

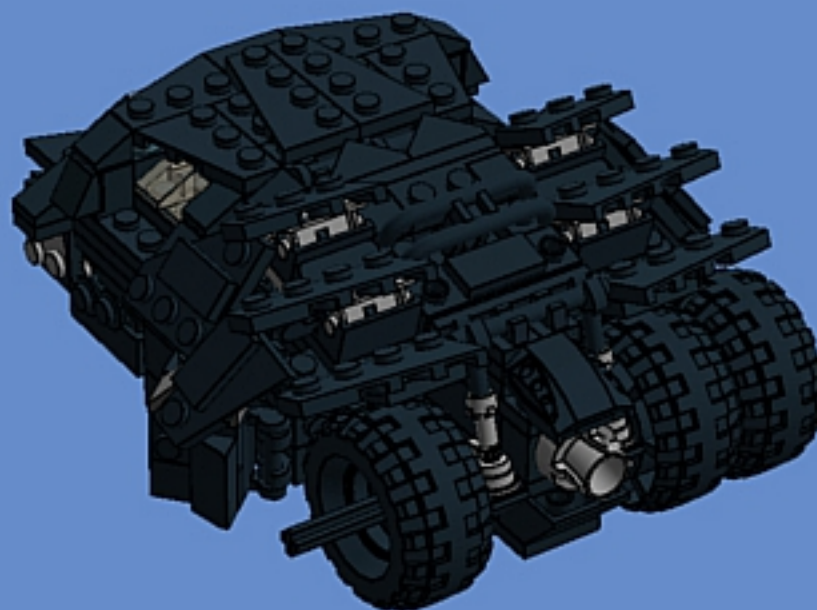




171 / 216

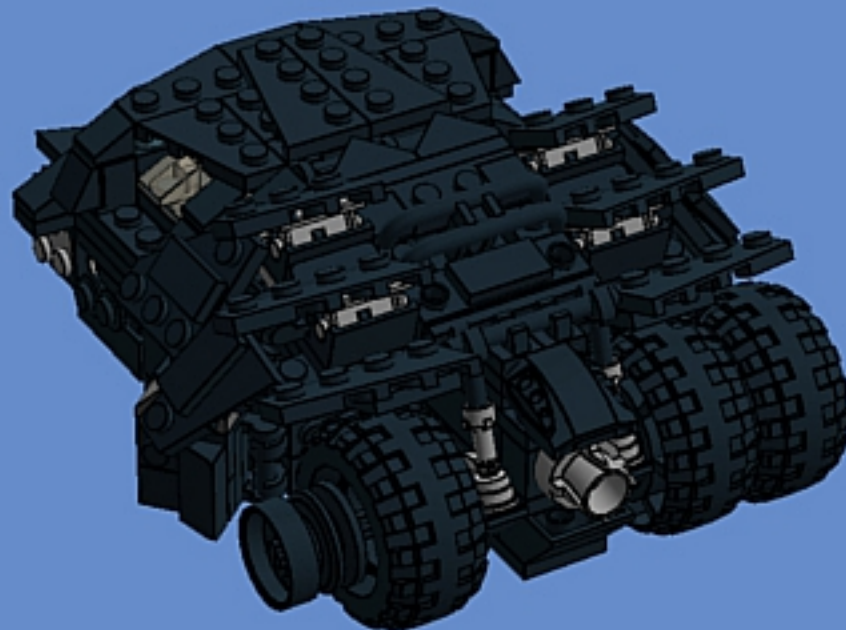


172 / 216

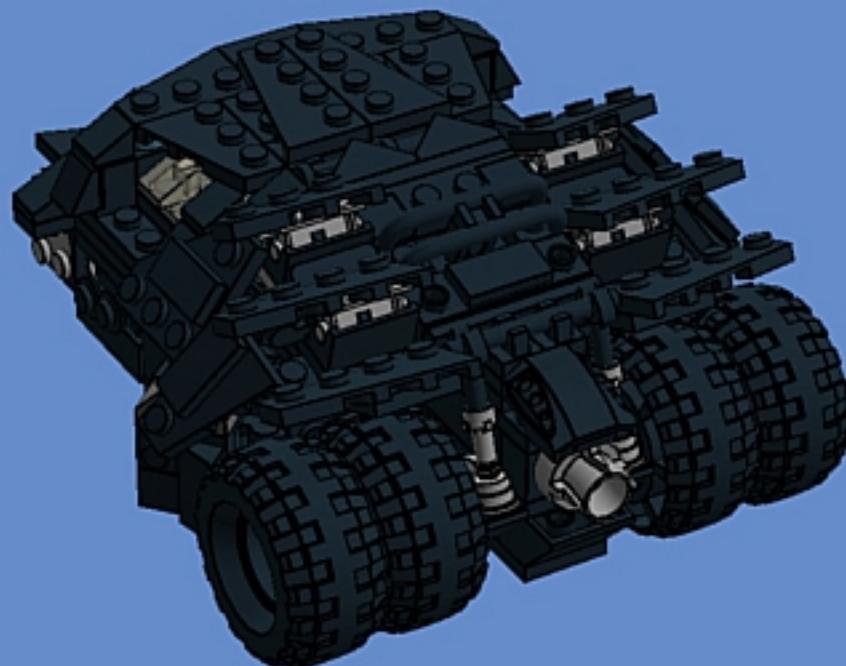




173 / 216



174 / 216





175 / 216



176 / 216





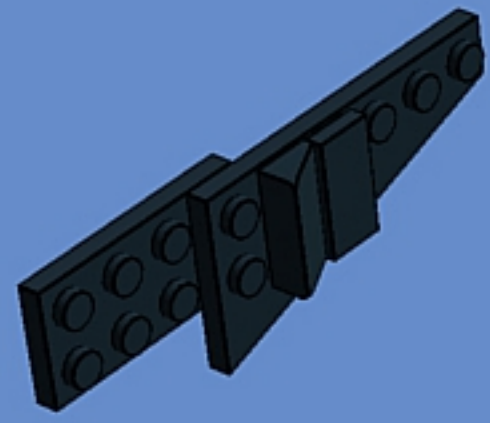
177 / 216



178 / 216

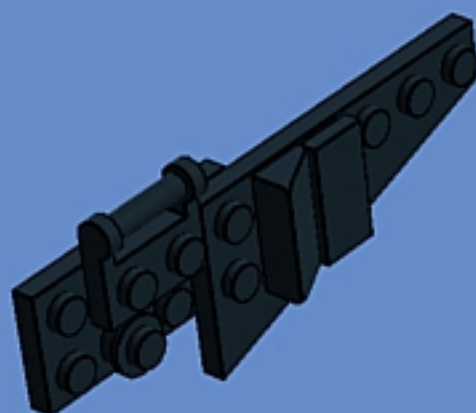


178 / 216

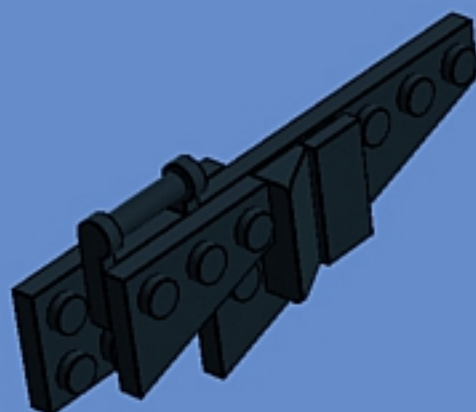


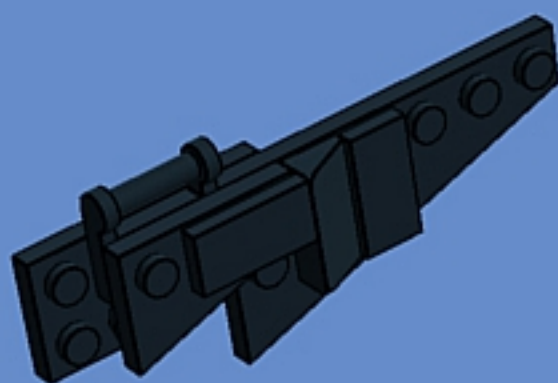


179 / 216



180 / 216







183 / 216



184 / 216



185 / 216



186 / 216







189 / 216

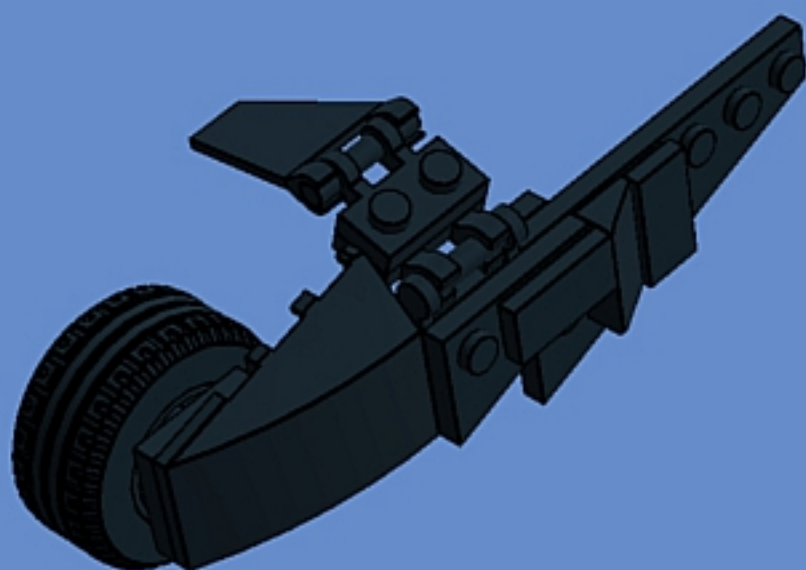


190 / 216



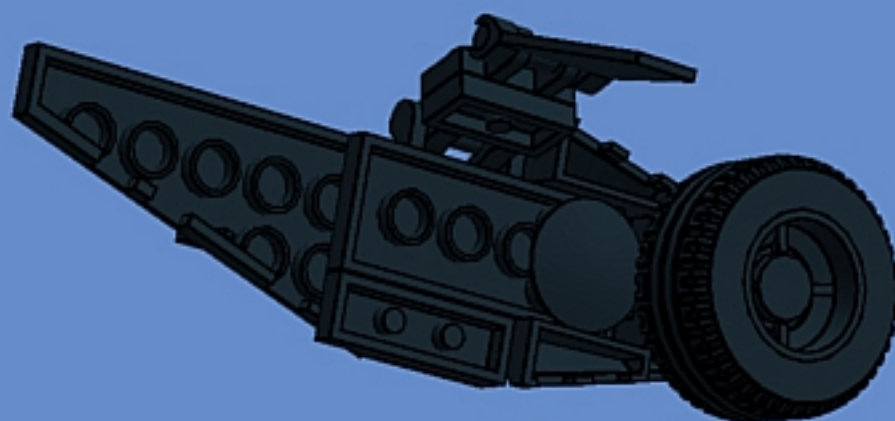


191 / 216



192 / 216



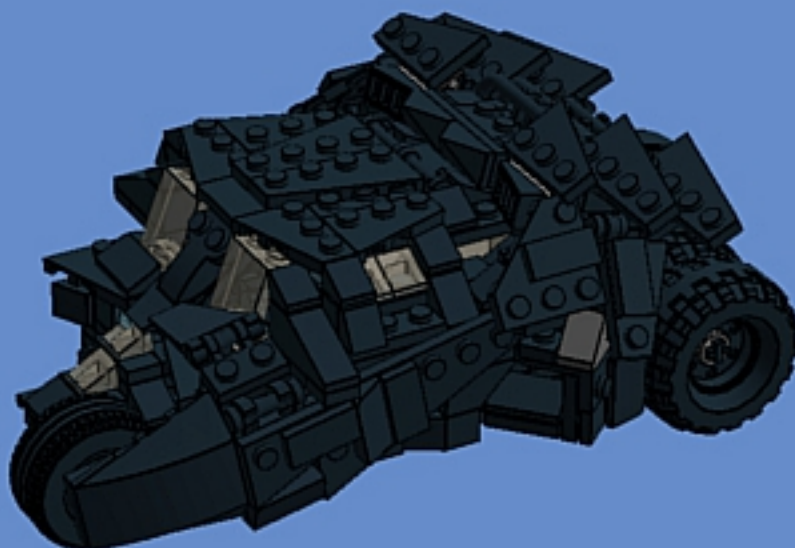


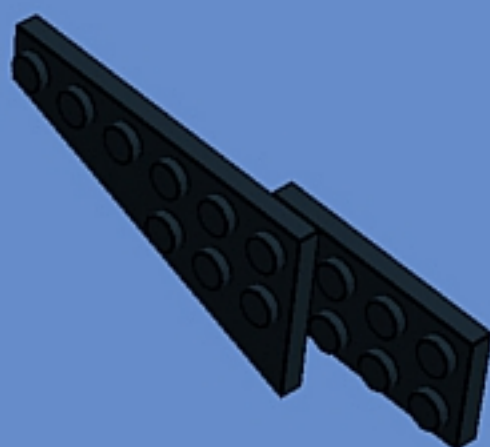


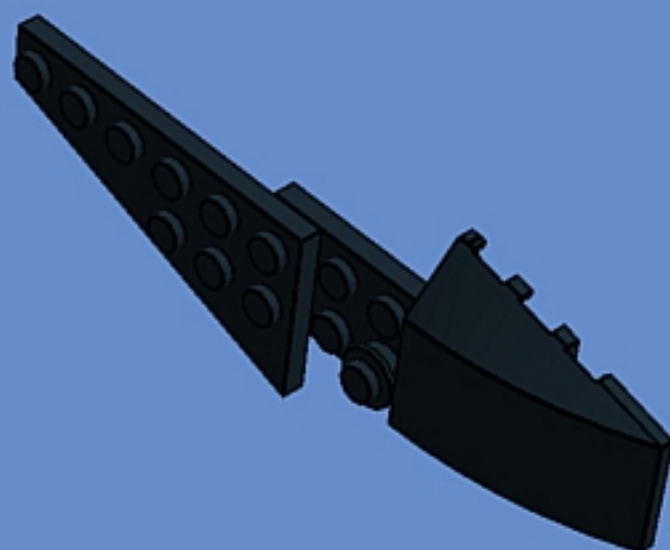
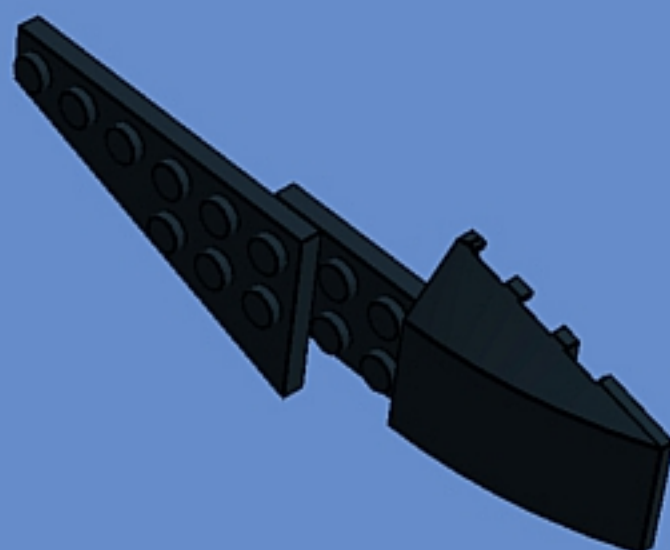
195 / 216

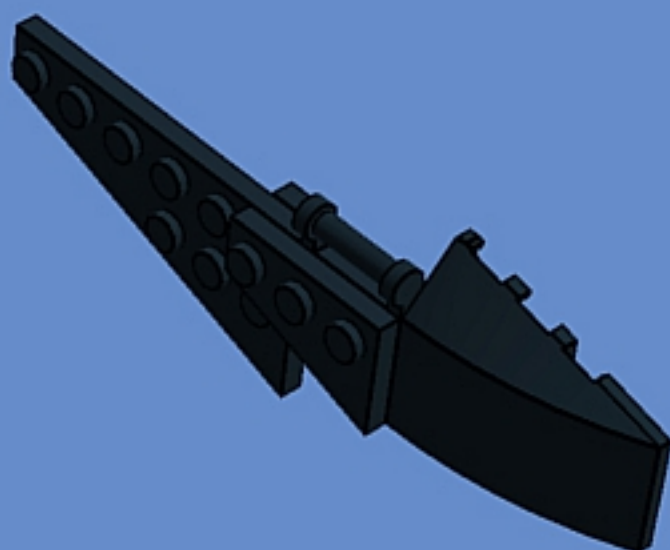
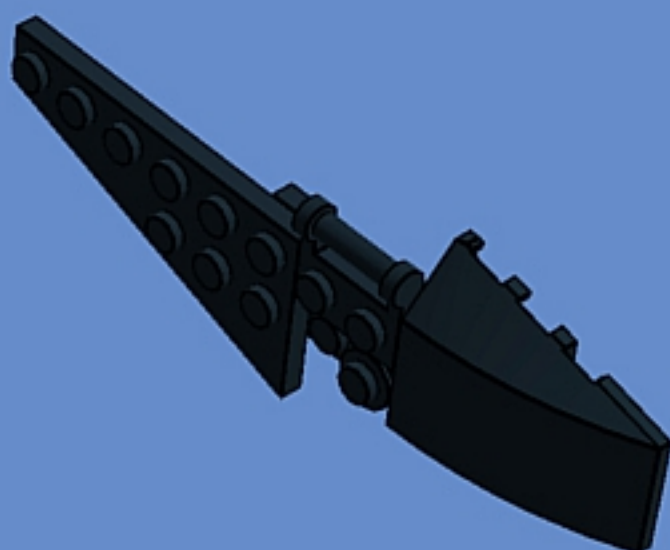


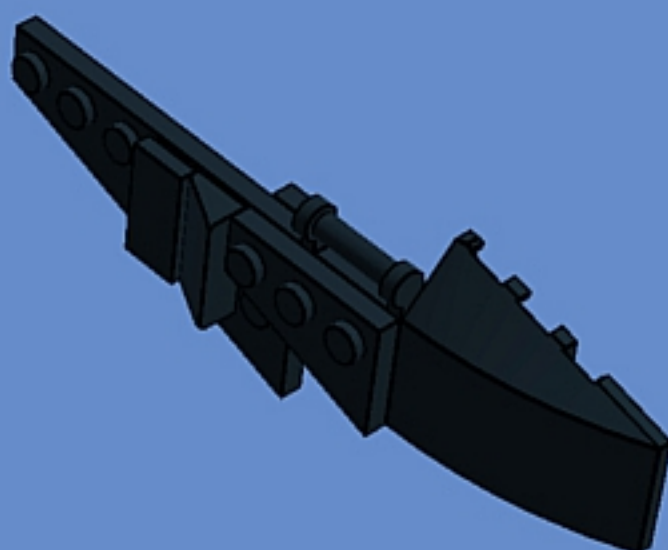
196 / 216

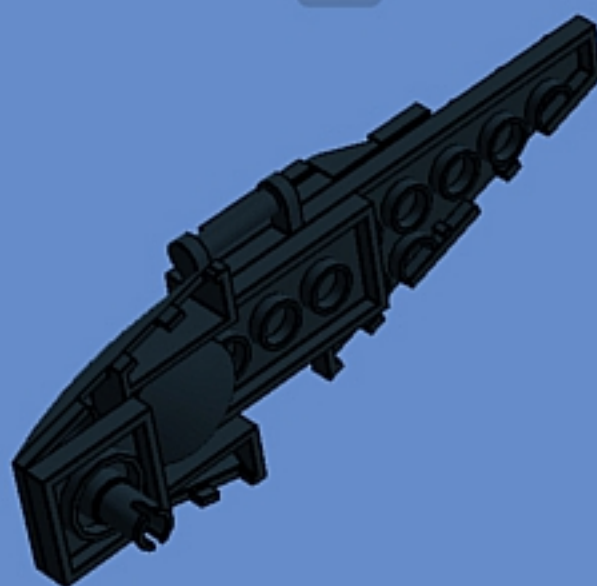
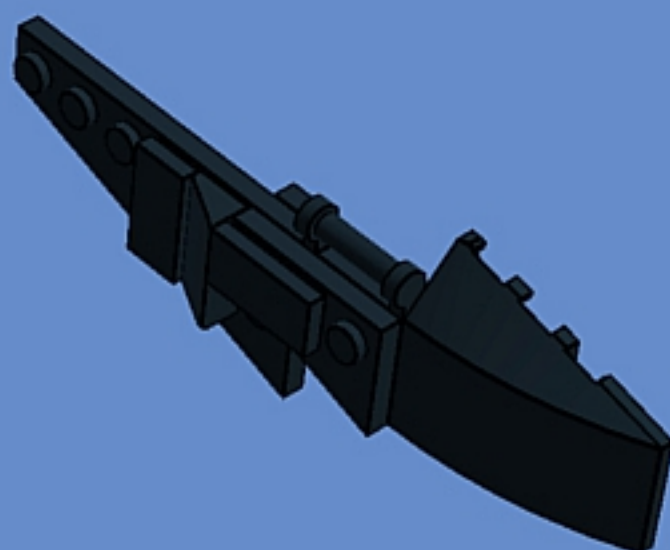
















209 / 216



210 / 216

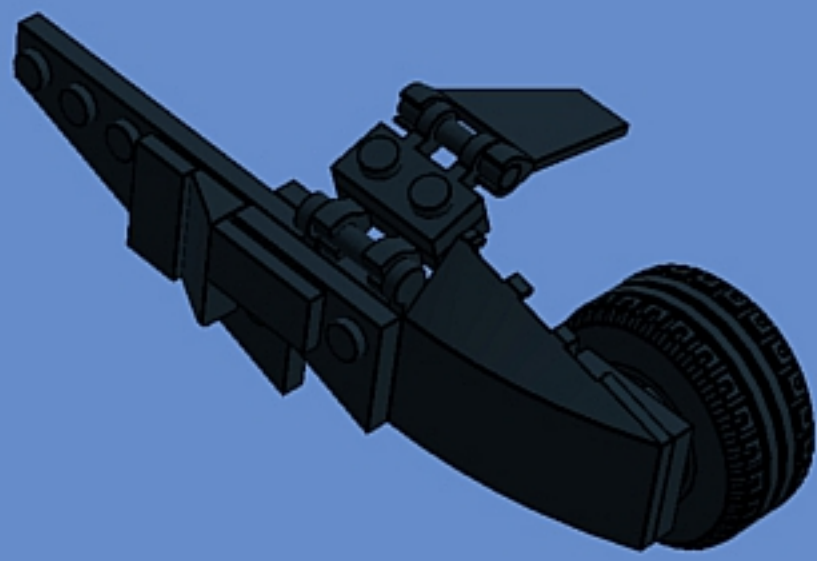




211 / 216



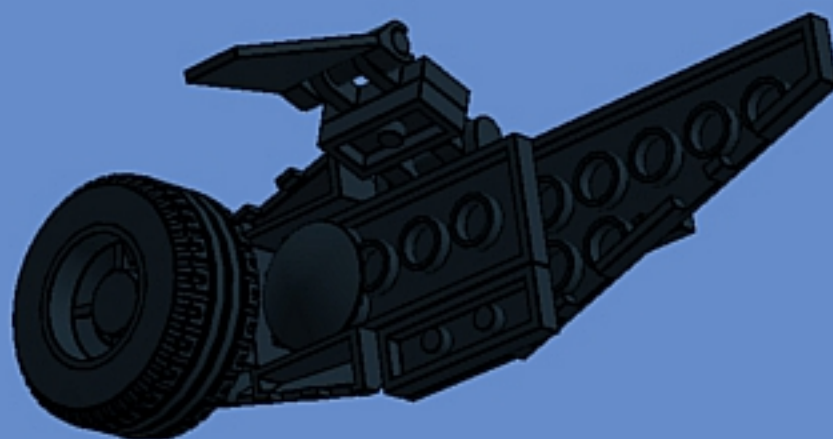
212 / 216



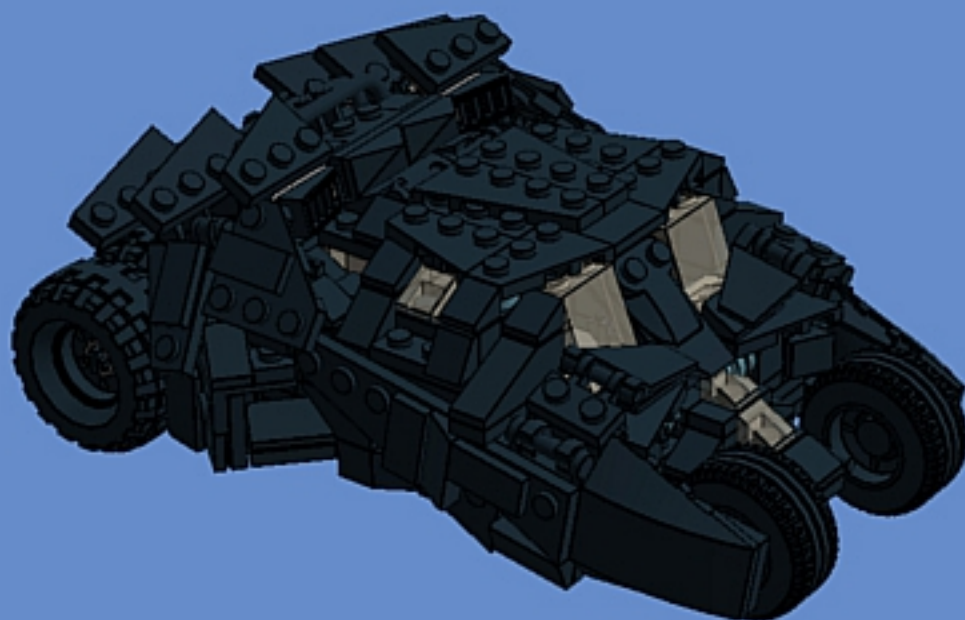




215 / 216



216 / 216



For alternate front axle and wheel version, continue to next page.

Parts List

10 Pieces

6 x



403226 PLATE 2X2 ROUND - Black

2 x



RIM NARROW Ø18x7 W
4499259 HOLE Ø4.8 - Medium Stone
Grey

2 x



4211815 CROSS AXLE 3M - Medium
Stone Grey



OR



1 / 5







OR



1 / 5







Hello Fellow Builders,

This custom Tumbler was created by me over a period of about three months. I hope you enjoy building this as much as I enjoyed coming up with the design. If you would like LEGO to make this into a real LEGO set, please support my project at the official custom LEGO set site.

<http://lego.cuusoo.com/ideas/view/38399>

If I receive 10,000 supporters, LEGO will review my design and see if they would like to sell this as an official LEGO set.

Thanks for your support!

Buggyirk