

CORNER RECORD

Agency Index

BK141 PG 47

Document Number

CR 14880

City of OAKLAND

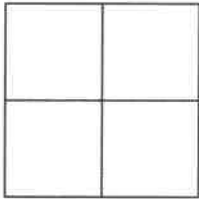
County of

ALAMEDA

, California

Brief Legal Description

WELL MONUMENT LOCATED WITHIN 11th AVE AT E. 23rd STREET



CORNER TYPE

Government Corner ☐ Control ☒
Meander ☐ Property ☐
Rancho ☐ Other ☐

Date of Survey 10/8/2020

COORDINATES (Optional)

N. E.

Elevation

Units Metric ☐ U.S. Survey Foot ☐

Horizontal Datum

Zone Epoch Date

Vertical Datum

☐ Complies with Public Resources Code §§8801-8819☐ Complies with Public Resources Code §§8890-8902PLS Act Ref: ☐ 8765 (d) ☒ 8771 ☐ 8773 ☐ Other:

Corner/
Monument: ☒ Left as found ☐ Established ☐ Rebuilt ☒ Pre-Construction
☐ Found and tagged ☐ Reestablished ☒ Referenced ☐ Post-Construction

Narrative of corner identified and monument as found, set, reset, replaced, or removed:

☐ See sheet #2 for description (s):

FOUND 1/4" PIN IN CONCRETE IN MONUMENT WELL, NO TAG.

FOUND AND SET POINTS AS SHOWN ON PAGE 2.

THIS POINT WAS REFERENCED PRIOR TO A CONSTRUCTION PROJECT IN THE VICINITY.

THE TIES SHOWN HEREON ARE FOR THE PURPOSE OF PERPETUATING FOUND MONUMENTATION.
NO CLAIM IS MADE AS TO THE RELATIONSHIP OF THE POINTS OR LINES SHOWN HEREON TO TRUE
BOUNDARY LOCATION.

SURVEYOR'S STATEMENT

This Corner Record was prepared by me or under my direction in conformance with

the Professional Land Surveyors' Act on OCTOBER 1, 2021

Signed John T. May P.L.S. or ~~R.C.E.~~ No. 8570
JOHN T. MAY

COUNTY SURVEYOR'S STATEMENT

This Corner Record was received

and examined and filed OCT 26 2021

Signed D. Ian Wilson P.L.S. or ~~R.C.E.~~ No. 7010

Title COUNTY SURVEYOR

County Surveyor's Comment





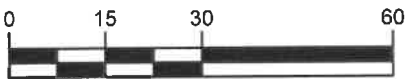
LEGEND

- FOUND 1/4" PIN IN CONCRETE IN MONUMENT WELL
- ⊙ SET NAIL AND TAG STAMPED "TOWILL RP" IN WALK
- ✕ SET NAIL AND TAG STAMPED "TOWILL RP" IN CURB

APN ASSESSOR'S PARCEL NUMBER

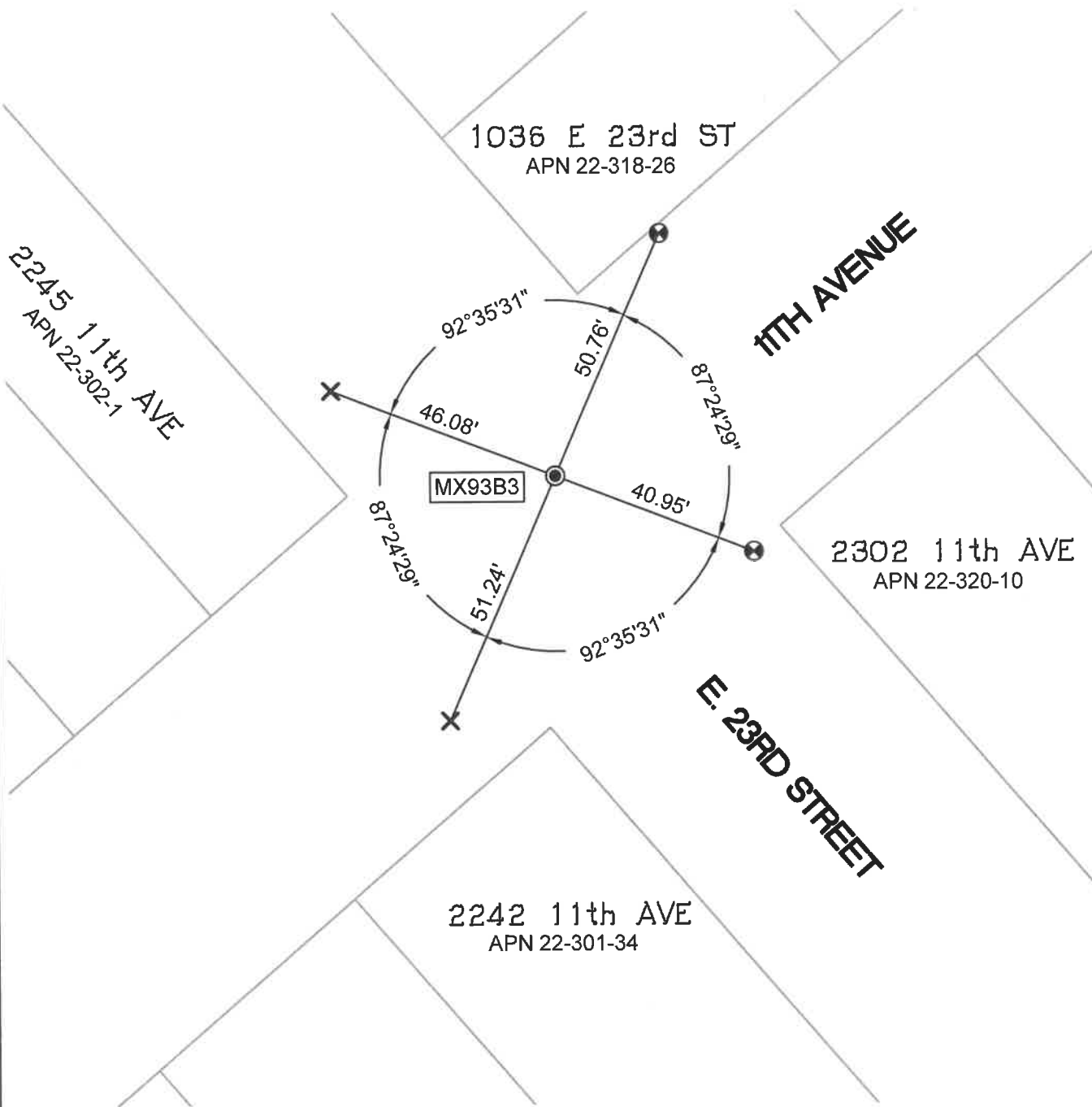
AA##A# ALAMEDA COUNTY MONUMENT ID

19592 REFERENCE STREET ADDRESS



GRAPHIC SCALE: 1 INCH = 30 FT

ALL MEASUREMENTS ARE IN U.S. SURVEY FOOT AND DECIMAL THEREOF



16647-11th Ave-CR-9