

19-40 A

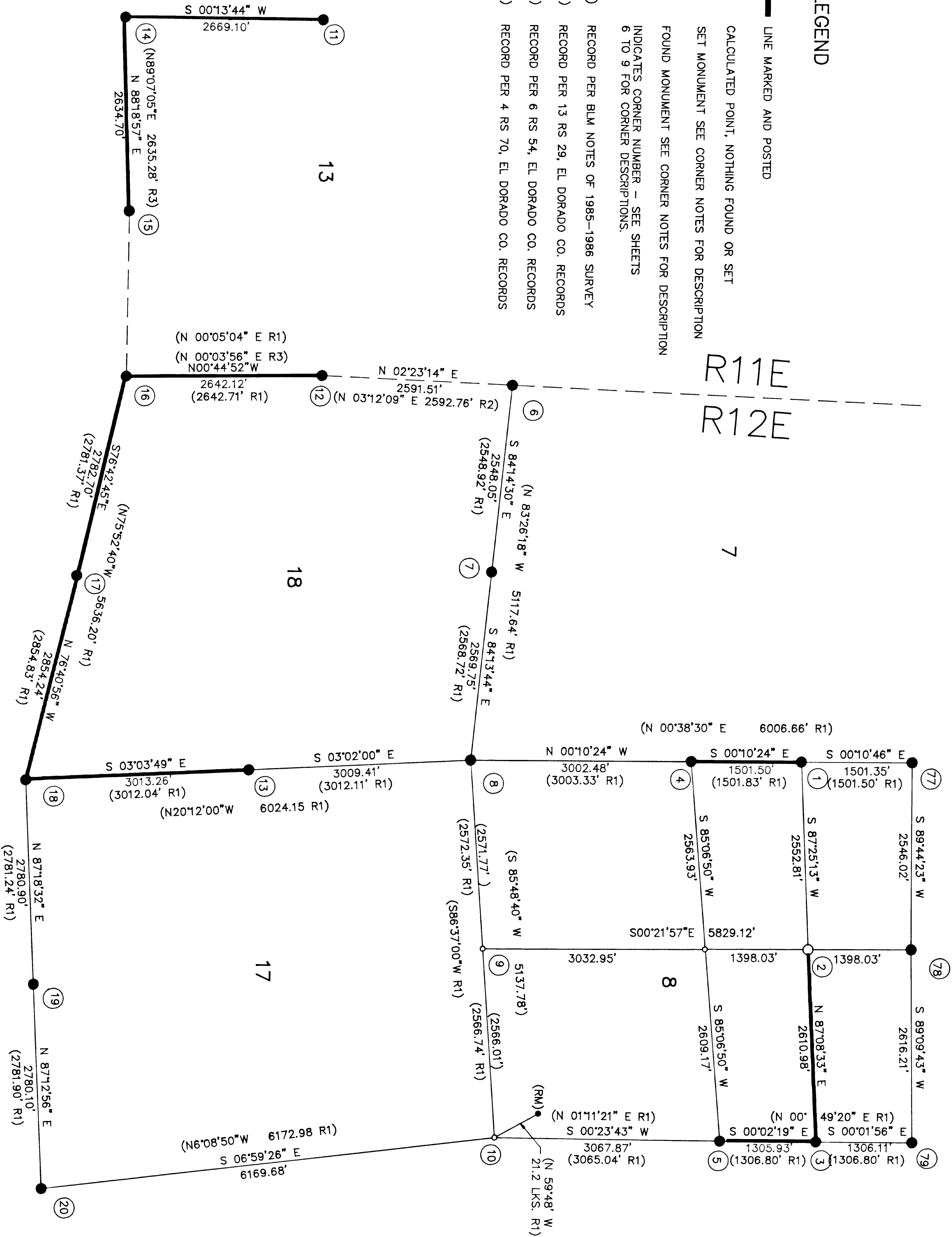
RECORD OF SURVEY

19-40 A

BEING IN SECTIONS 5, 8, 17, 18, 19, 20
26, 27, 28, 29, 30, 31, 32, 33, 34 & 35
OF T. 13N., R. 12E., M.D.M. AND SECTIONS
13 & 24 OF T. 13N., R. 11E., M.D.M. IN THE
UNINCORPORATED AREA OF PLACER COUNTY
AND EL DORADO COUNTY, CALIFORNIA

LEGEND

- CALCULATED POINT, NOTHING FOUND OR SET
- SET MONUMENT SEE CORNER NOTES FOR DESCRIPTION
- FOUND MONUMENT SEE CORNER NOTES FOR DESCRIPTION
- ⑥ INDICATES CORNER NUMBER - SEE SHEETS 6 TO 9 FOR CORNER DESCRIPTIONS.
- (R1) RECORD PER BLM NOTES OF 1985-1986 SURVEY
- (R2) RECORD PER 13 RS 29, EL DORADO CO. RECORDS
- (R3) RECORD PER 6 RS 54, EL DORADO CO. RECORDS
- (R4) RECORD PER 4 RS 70, EL DORADO CO. RECORDS



BASIS OF BEARING:

GRID BEARINGS (CALIFORNIA ZONE 2) DERIVED
FROM GPS OBSERVATIONS. MAPPING ANGLES
SHOWN AT CORNER NUMBERS 14, 20, 34, 44 & 76.
ALL DISTANCES SHOWN AS MEASURED ARE GRID
DISTANCES. TO CONVERT TO GROUND, DIVIDE
SHOWN BY 0.99977873.

