

SURVEYOR'S CERTIFICATE

This map was prepared by me or under my direction and is based upon a field survey in conformance with the requirements of the Subdivision Map Act of the request of William C. Beedle in July, 1974. I hereby certify that it conforms to the approved tentative map and conditions of approval thereof, that all provisions of applicable state law and local ordinances have been complied with.

Harlan H. Heath
Harlan H. Heath R.C.E. N. 8108

COUNTY SURVEYOR'S CERTIFICATE

This map has been examined this 6th day of DECEMBER, 1974 for conformance with the requirements of Section 11575 of the Subdivision Map Act.

JAMES T. PORT
County Surveyor

By Deputy *Steve Johnson*

RECORDER'S CERTIFICATE

Filed this 11th day of December, 1974 at 2:26 P.M. in Book 349 of Maps of Page 33 of the request of Harlan H. Heath.
File No. 4910908 Fee \$500 Paid.
GEORGE A. MANN
County Recorder

By Deputy *Joe Arnold*

BASIS OF BEARINGS

The bearing (S 86°45'W) of the northwesterly line of Lots 220 & 221 as shown on the Map of Redwood Estates - Map No. 3 recorded in Book "V" of Maps of Page 32, Santa Clara County Records, was used as the basis of bearings shown on this map.

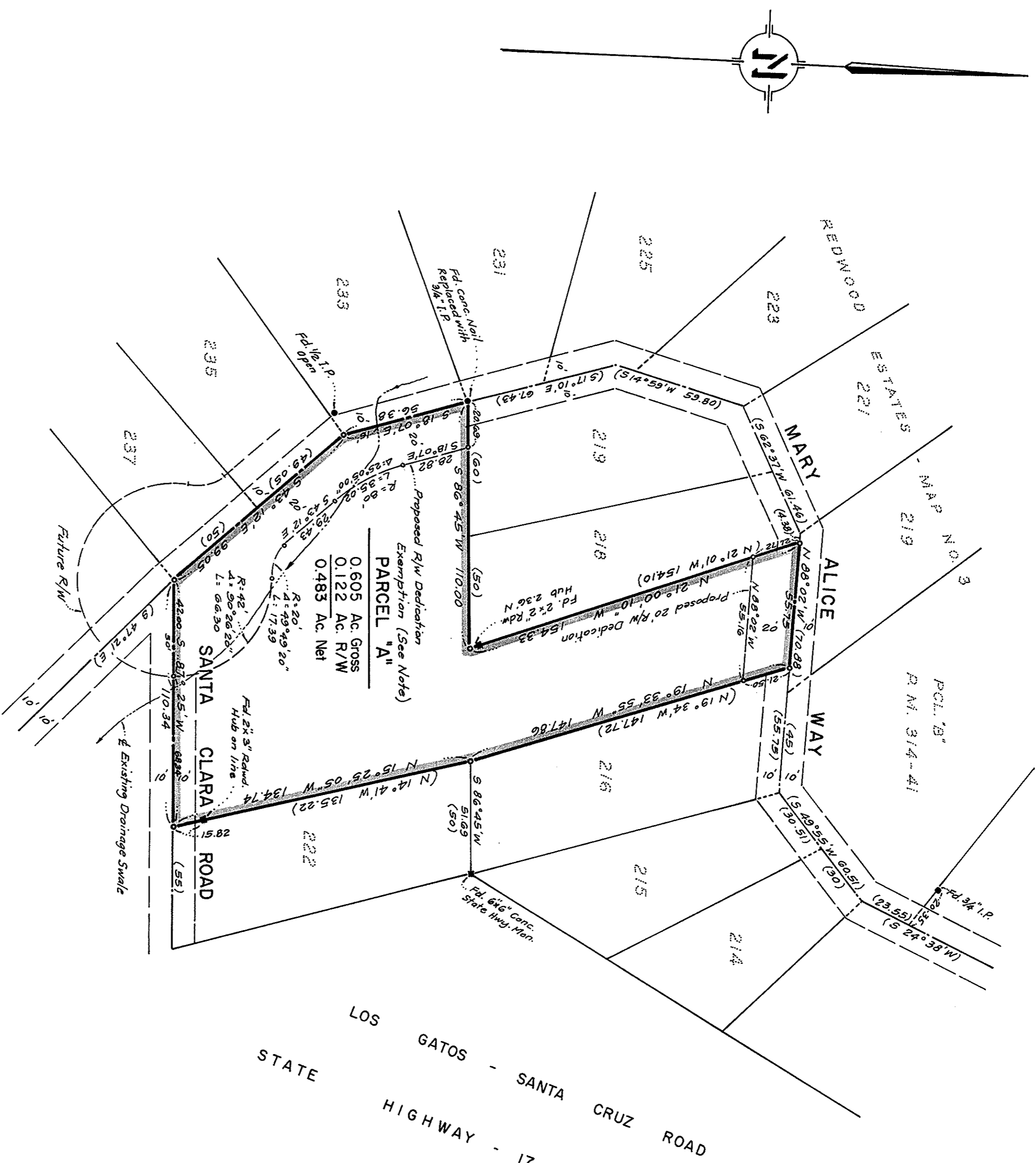
PARCEL MAP

OF LANDS OF
WILLIAM C. BEEDLE

BEING A COMBINATION TO A SINGLE PARCEL OF
LOTS 217, 220 & 221 OF BLOCK "K"
REDWOOD ESTATES - MAP NO. 3
BK. "V" MAPS Pg. 32
SANTA CLARA COUNTY, CALIFORNIA

HARLAN H. HEATH
CIVIL ENGINEER
SAN JOSE, CALIFORNIA

JULY, 1974 SCALE: 1" = 40'



LEGEND

- Indicates 3/4" Iron Pipe Set.
- Indicates Monument Found as noted.
- (123.45) Indicates Record Data.

NOTE:

Parcel "A" was exempted from minor land division regulations by Resolution of the Land Development Committee pursuant to Section 11575 of the County Ordinance Code. This parcel is subject to Building Site Approval and Ordinance requirements prior to development or reduction. Conditions will include, but are not limited to road dedication and road improvement, water supply, sewage disposal and fire protection.