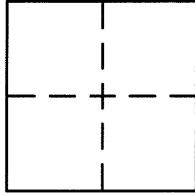


CORNER RECORDDocument Number CR7694City of SAN LEANDROCounty of ALAMEDA, CaliforniaBrief Legal Description STREET MONUMENT ON AMHERST COURT AS SHOWN ON MAP OF TRACT 1003 (BK 31 PG 52)**CORNER TYPE**

Government Corner ☐ Control ☒
 Meander ☐ Property ☐
 Rancho ☐ Other ☐
 Date of Survey SEPTEMBER 28, 2015

COORDINATES (Optional)

N. _____
 E. _____
 Zone _____ NAD27 ☐ NAD83 ☐
 NAD83 Epoch _____
 Elev. _____
 Vert. Datum: NGVD29 ☐ NAVD88 ☐
 Meas. Units: Metric ☐ Imperial ☐
 U.S. Survey Feet ☐

Corner – Left as found ☒ Found and tagged ☐ Established ☐ Reestablished ☐ Rebuilt ☐

Identification and type of corner found: Evidence used to identify or procedure used to establish or reestablish the corner:

FOUND 1/4" PIN IN CONCRETE ON THE MONUMENT LINE OF AMHERST COURT, AS SHOWN ON THAT MAP
OF TRACT 1003, RECORDED JULY, 19, 1951 (BK 31 PG 52), ALAMEDA COUNTY RECORDS.

A description of the physical condition of the monument as found and as set or reset:

THE MONUMENT WAS FOUND IN GOOD CONDITION. ESTABLISHED FROM RECORD TIES TO STREET
MONUMENTS AS SHOWN ON SAID MAP. SET TIES TO THE MONUMENT AS SHOWN ON THE SKETCH
ON PAGE 2.

SURVEYOR'S STATEMENT

This Corner Record was prepared by me or under my direction in conformance with
 the Land Surveyor's Act on DECEMBER 4, 2015.

Signed [Signature] P.L.S. or R.C.E. No. 9225
RODNEY A. STEWART II
Kier & Wright, Civil Engineers & Surveyors, Inc., Pleasanton, CA
COUNTY SURVEYOR'S STATEMENT

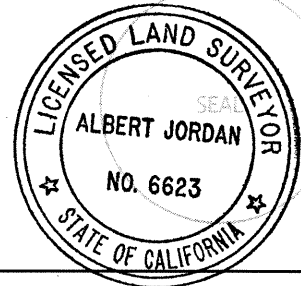
This Corner Record was received 10-28-2015

and examined and filed 12-07-2015

Signed Albert Jordan P.L.S. or R.C.E. No. 6623

Title Deputy County Surveyor

County Surveyor's Comment _____



LEGEND:

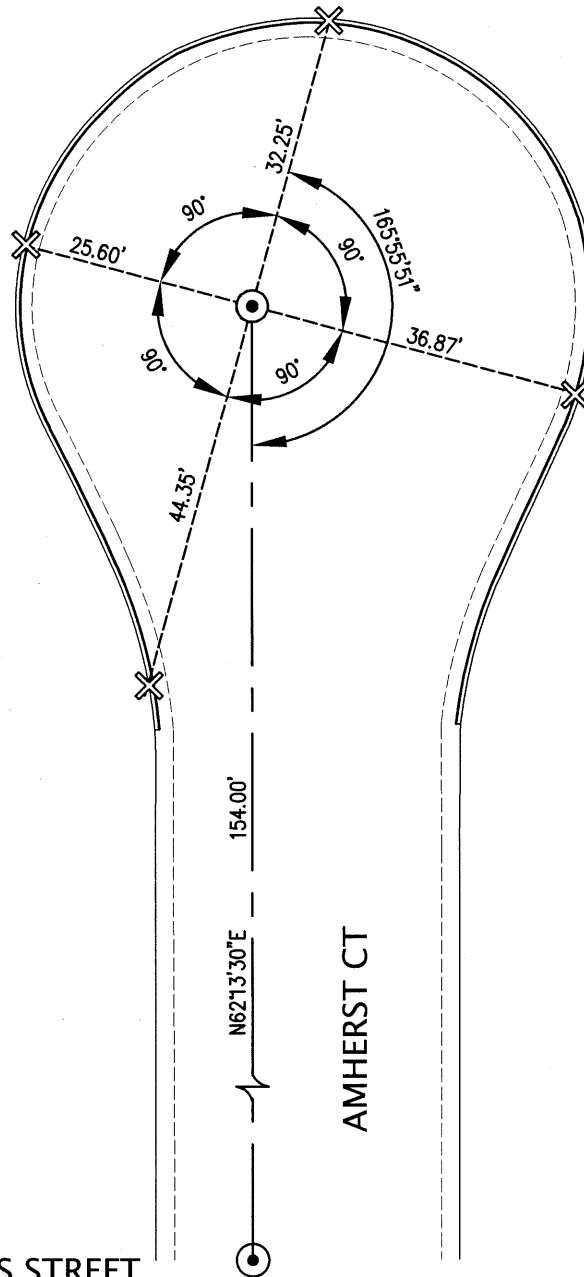
⊙ 1/4" PIN IN CONCRETE

✕ CUT CROSS

==== CURB & GUTTER



0 10' 20' 40'
Scale 1" = 20 ft



KW#A15598