

CONSTRUCTION NOTE:
PIT WALL FORMWORK AND SHORING TO
REMAIN IN PLACE DURING BACK FILL
OPERATIONS AND UNTIL FLOOR SLAB
HAS BEEN INSTALLED AND ALLOWED TO
CURE FOR 72 HOURS (MINIMUM).

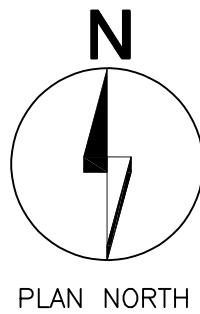
LIFT NOTES:
1. VERIFY QUANTITY OF LIFTS
WITH OWNER PRIOR TO
INSTALLATION OF CONCRETE
FOUNDATIONS.
2. RECESS AREA FOR LIFTS
MUST BE EXACTLY 4" DEEP
AND LEVEL TO ENSURE
PROPER EQUIPMENT FUNCTION.

REFER TO PLUMBING
DRAWINGS FOR
UNDER SLAB PIPING
REQUIREMENTS.

TYPICAL SUB-ON-GRADE (U.N.O.)
5" THICK CONCRETE SLAB
REINFORCED WITH #4 BARS AT 16"
O.C.E.W. PLACED CENTERED IN
SLAB. PROVIDE 10 MIL
POLYETHYLENE VAPOR BARRIER.

PLAN NOTES:

1. REF. SHEET S0.0 FOR STRUCTURAL NOTES AND SPECIAL INSPECTION REQUIREMENTS.
2. REF. 09/S2.0 FOR TYPICAL CORNER BAR DETAIL AS REQUIRED.
3. REF. 10/S2.0 FOR TYPICAL SLAB RECESS DETAIL AS REQUIRED.
4. REF. 01/S2.1 FOR TYPICAL GRADE BEAM PENETRATION DETAIL AS REQUIRED.
5. REF. 02/S2.1 FOR TYPICAL CURB DETAIL AS REQUIRED.
6. (+) INDICATES SIMPSON HDU HOLDOWN. REFER TO SHEARWALL SCHEDULE ON S1.1 FOR SIZE AND 03/S2.1 FOR TYPICAL HOLDOWN DETAIL.
7. REFER TO 05/S2.1 FOR TYPICAL TRASH ENCLOSURE SECTION. REFER TO A0.3 FOR TRASH ENCLOSURE PLAN.



01 FOUNDATION PLAN
SCALE: 1/4"=1'-0"

Revisions:

File Name: 22152
Project No: 22152
Date: 05/26/23
Drawn By: STAFF
Checked By: CMB

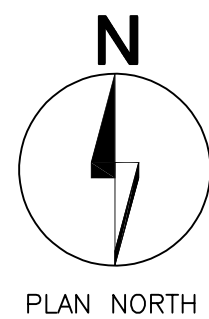
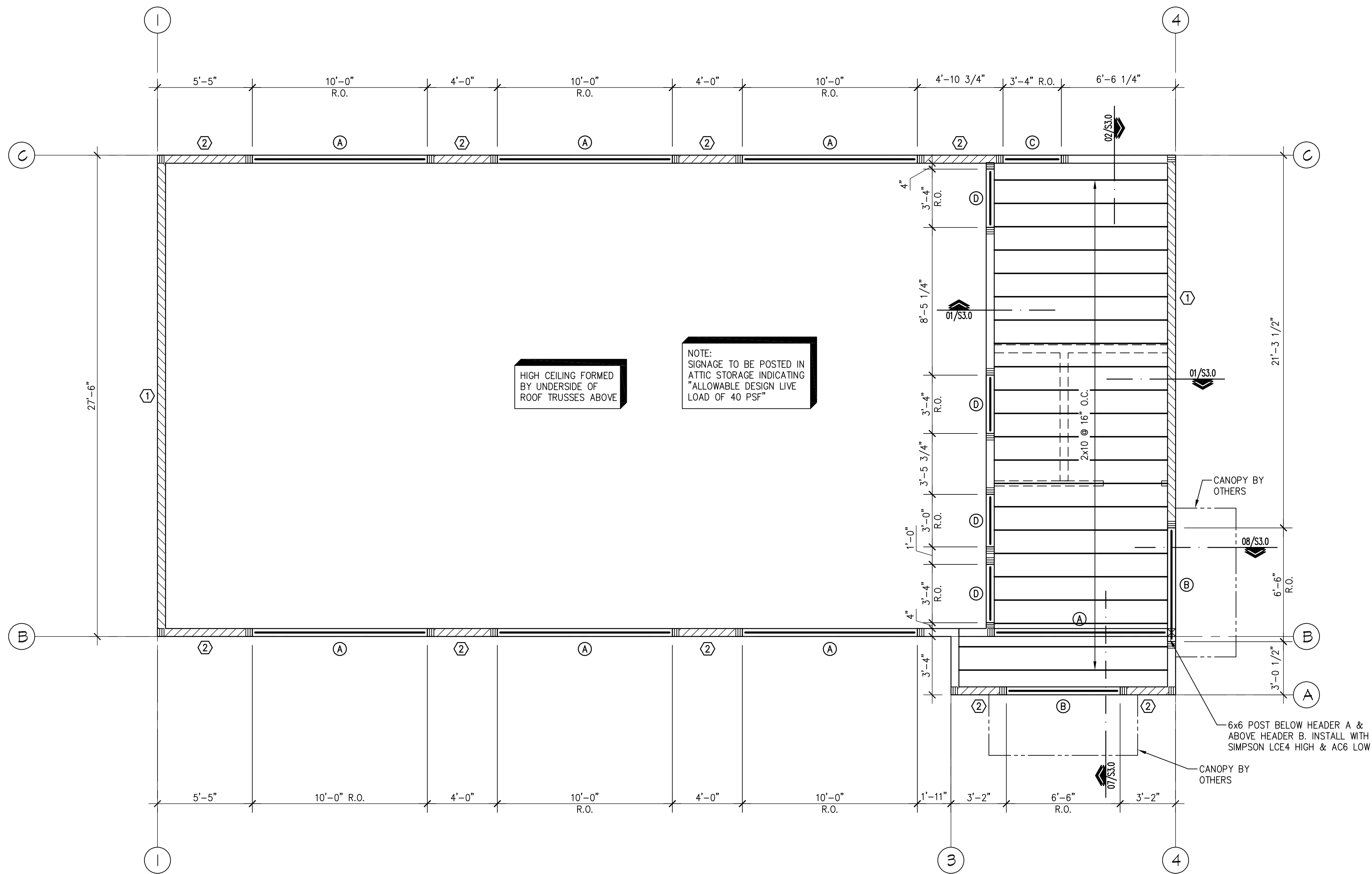
SHEET
S1.0
FOUNDATION
PLAN

2048 N. Simmons Freeway
Dallas, Texas 75247-6103
Phone: (214) 637-6299
www.rar.net

RAR
Associates, Inc.
Consulting Engineers

STRICKLAND BROTHERS
317 N BROAD STREET
WINDER, GEORGIA

Professional Engineer
No. 21506
Andrew J. Lebut
Seal



01

WALL/CEILING FRAMING PLAN

SCALE: 1/4"=1'-0"

PLAN NOTES:

1. REF. SHEET S0.0 FOR STRUCTURAL NOTES AND SPECIAL INSPECTION REQUIREMENTS.

HEADER SCHEDULE	
TYPE	SIZE
(A)	5 1/2" x 12" GLB
(B)	(3) 2x10 W/ 1/2" PLYWD. SPACERS
(C)	(3) 2x8 W/ 1/2" PLYWD. SPACERS
(D)	(3) 2x6 W/ 1/2" PLYWD. SPACERS

(X) - DESIGNATES HEADER TYPE

NOTES:

1. REF. 09/S3.0 FOR TYPICAL HEADER DETAIL (U.N.O.)
2. REFER TO ARCHITECTURAL DRAWINGS FOR ALL BOTTOM OF HEADER ELEVATIONS (U.N.O.)

SHEARWALL SCHEDULE			
TYPE	NAIL SPACING	HOLDOWN	ANCHOR BOLTS
(1)	10d @ 6" O.C.	HDU5-SDS2.5	5/8" @ 32" O.C.
(2)	10d @ 6" O.C.	HDU5-SDS2.5	5/8" @ 32" O.C.

(X) - DESIGNATES SHEARWALL TYPE

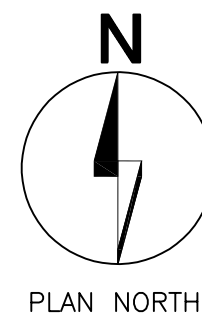
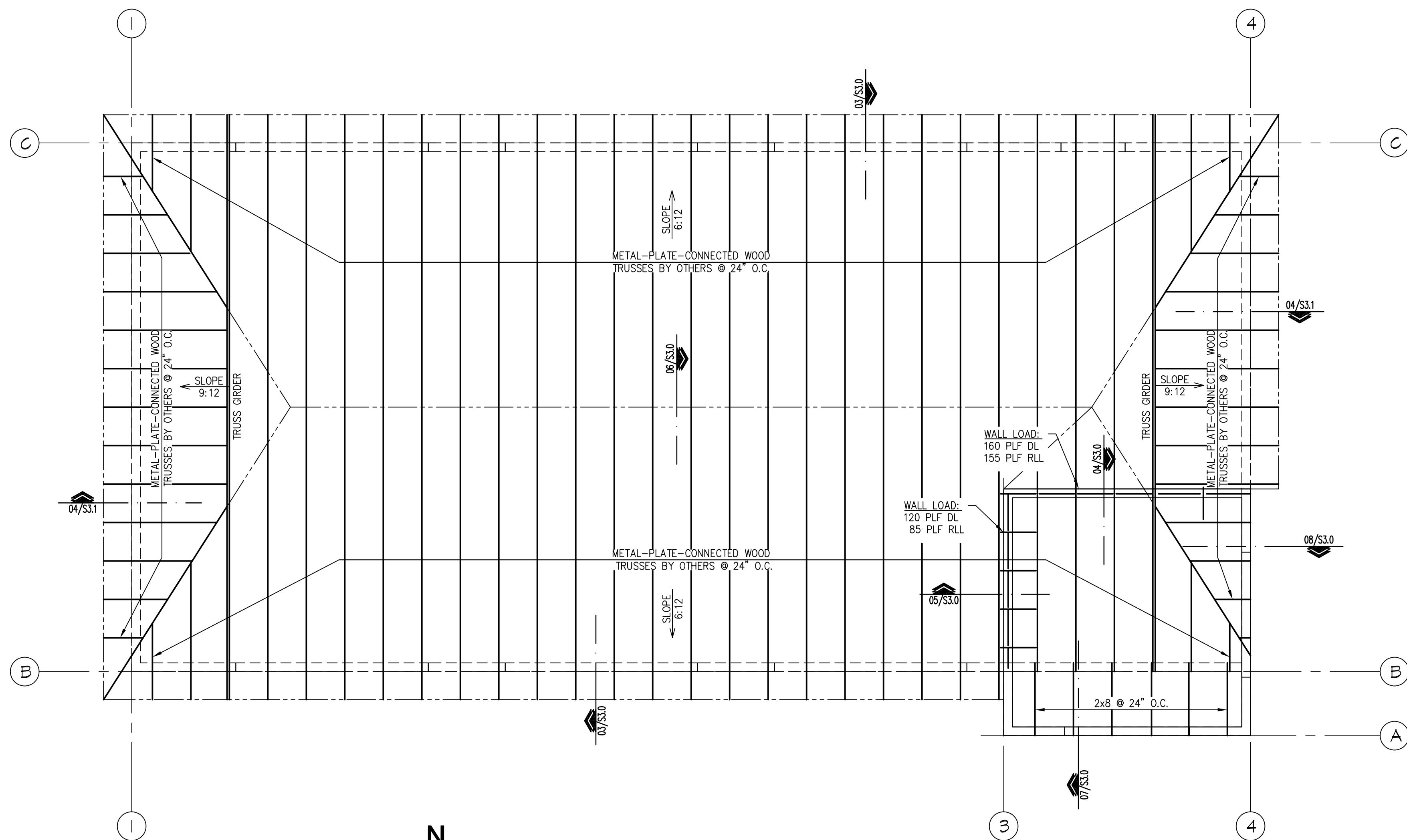
NOTES:

1. USE 10d COMMON NAILS.
2. NAIL PANEL FACES @ 12" O.C.
3. USE 1/2" WOOD SHEATHING ON EXTERIOR. REFER TO STRUCTURAL NOTES S0.0.
4. STAGGER PLYWOOD JOINT AND SILL PLATE NAILING.
5. FRAMING MEMBERS OR BLOCKING SHALL BE PROVIDED AT THE EDGES OF ALL SHEETS IN SHEARWALLS.
6. REFER TO 03/S2.1 FOR TYPICAL HOLDOWN DETAIL.
7. HOLDOWN ANCHORS MUST BE TIED IN PLACE PRIOR TO FOUNDATION INSPECTION IF CAST IN PLACE.
- *8. FRAMING AT ADJOINING PANEL EDGES SHALL BE 3 INCH NOMINAL OR THICKER AND NAILS SHALL BE STAGGERED WHERE NAILS ARE SPACED AT 2" O.C. OR ARE ON EACH FACE.

Revisions:

File Name: 22152
Project No: 22152
Date: 05/26/23
Drawn By: STAFF
Checked By: CMB

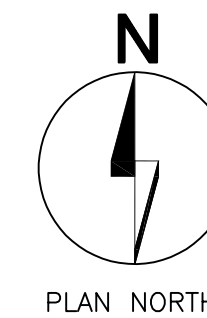
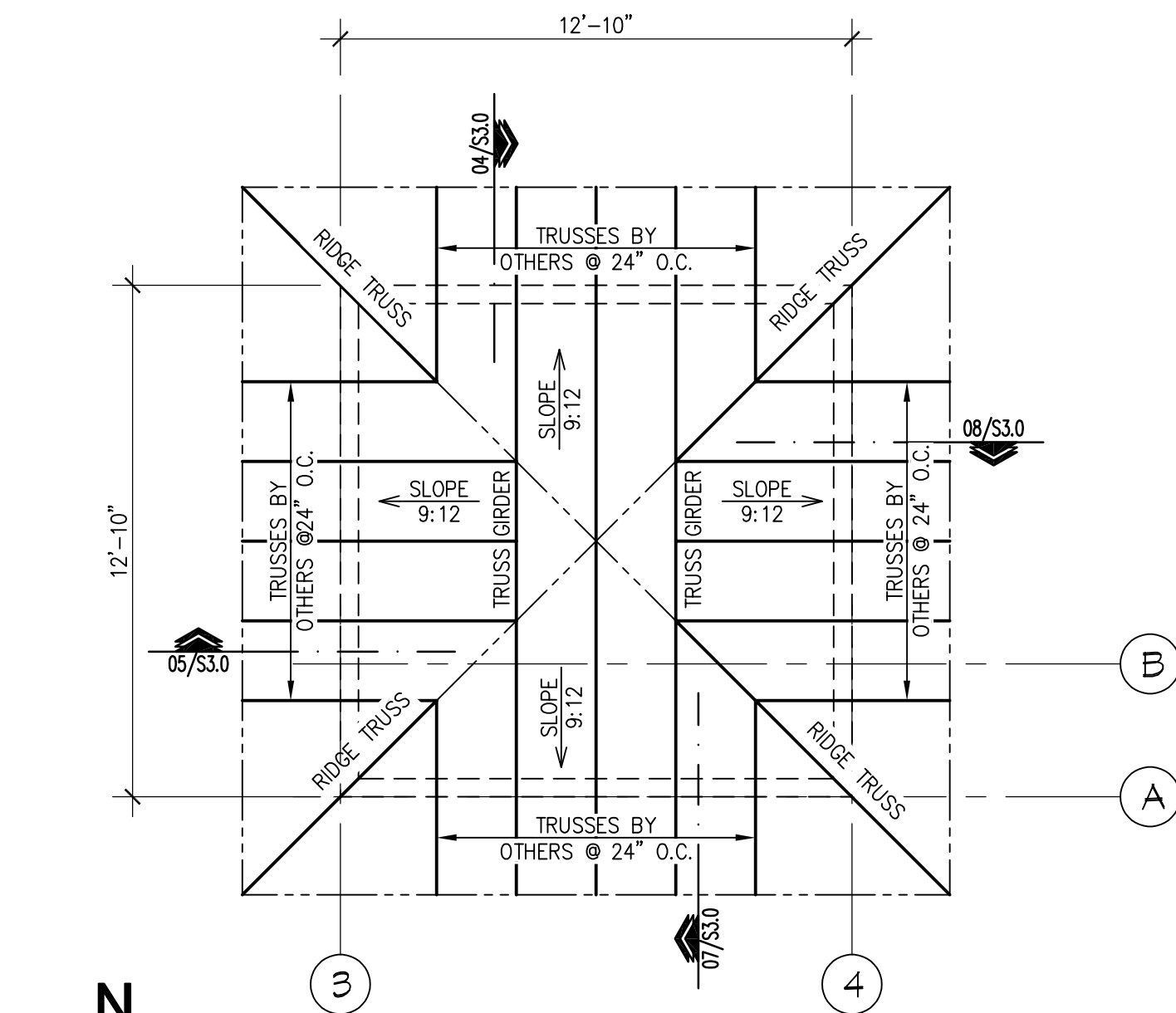
SHEET
S1.1
WALL/CEILING
FRAMING PLAN



01 ROOF FRAMING PLAN
SCALE: 1/4"=1'-0"

PLAN NOTES:

1. REF. SHEET S0.0 FOR STRUCTURAL NOTES AND SPECIAL INSPECTION REQUIREMENTS.
2. ROOF TRUSSES (U.N.O) ARE TO BE MANUFACTURED WOOD TRUSSES DESIGNED BY OTHERS. MAXIMUM SPACING SHALL BE 24" O.C. TRUSS LINES INDICATED ARE GRAPHICAL REPRESENTATION ONLY. ACTUAL LAYOUT SHALL BE SPECIFIED BY THE TRUSS MANUFACTURER. REFER TO S0.0 FOR GENERAL TRUSS DESIGN NOTES.
3. REFER TO 10/S3.0 FOR TYPICAL ROOF DIAPHRAGM NAILING AND DECK LAYOUT REQUIREMENTS.
4. REFER TO 03/S3.1 FOR TYPICAL (2) 2X BEARING PLATE SPLICE REQUIREMENTS.



02 TOWER ROOF FRAMING PLAN
SCALE: 1/4"=1'-0"

Revisions:

File Name: 22152	22152
Project No:	05/26/23
Date:	STAFF
Drawn By:	CMB
Checked By:	

SHEET
S1.2
ROOF FRAMING
PLANS

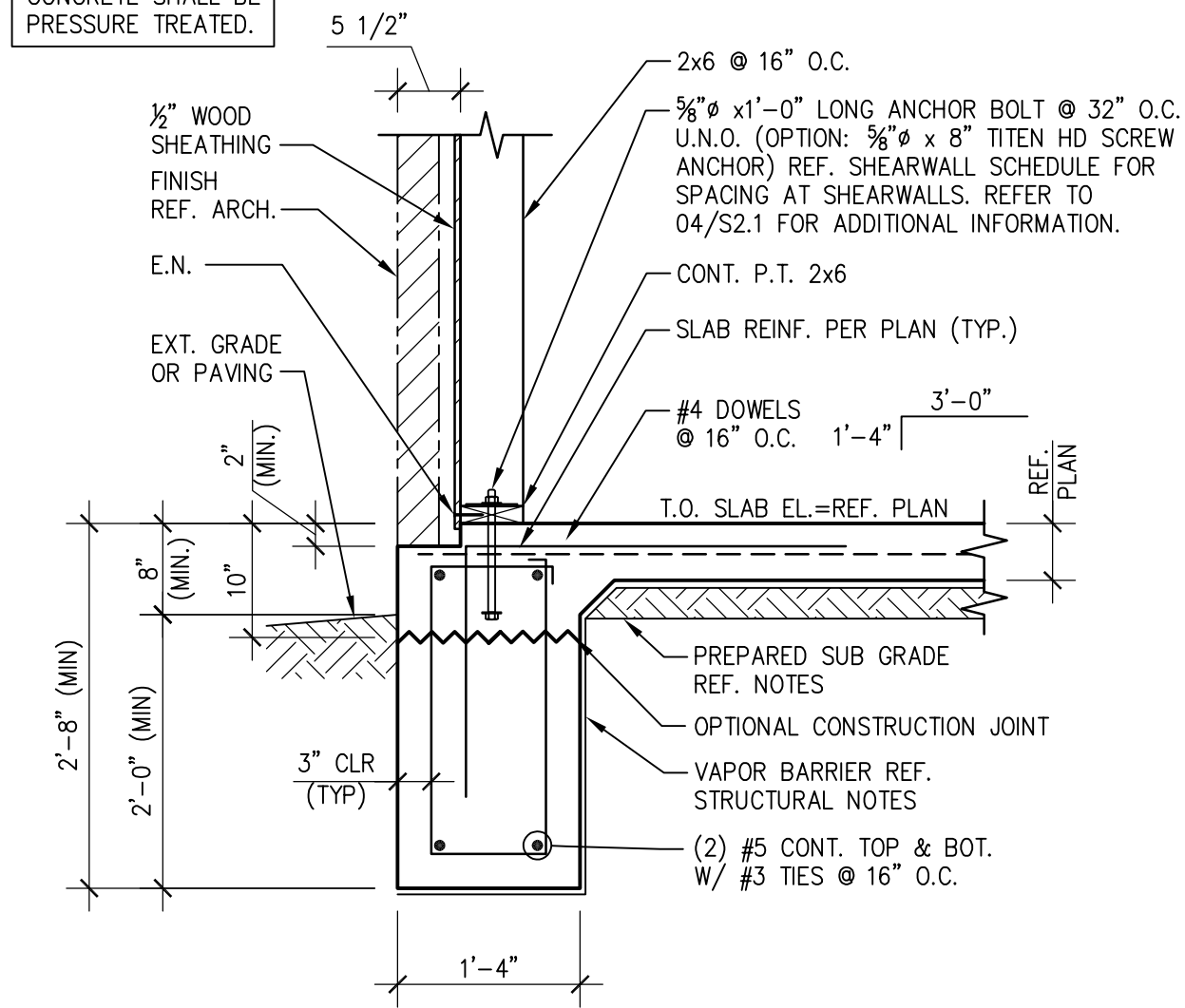
STRICKLAND BROTHERS
317 N BROAD STREET
WINDER, GEORGIA

Ronald R. Roberts
Professional Engineer
2048 N. Simmons Freeway
Dallas, Texas 75247-6103
Phone: (214) 637-6299
www.rar.net

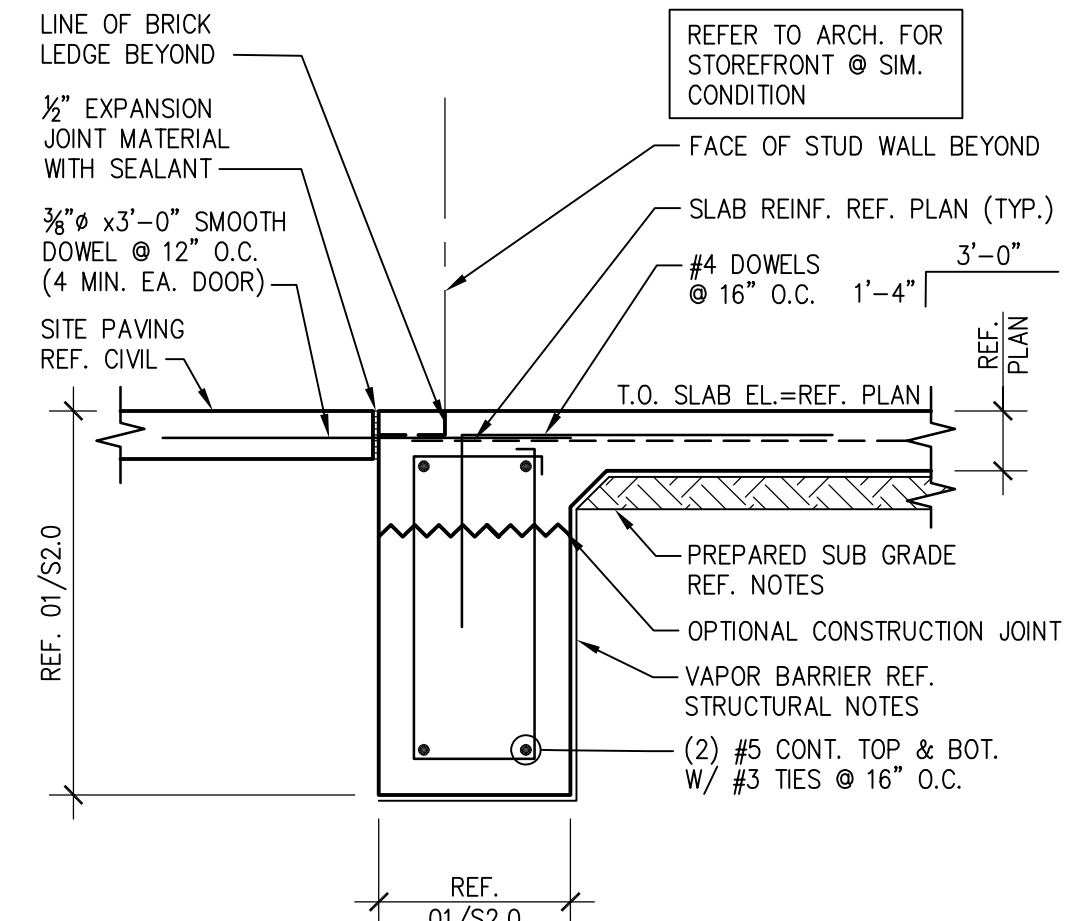
Associates, Inc.
Consulting Engineers



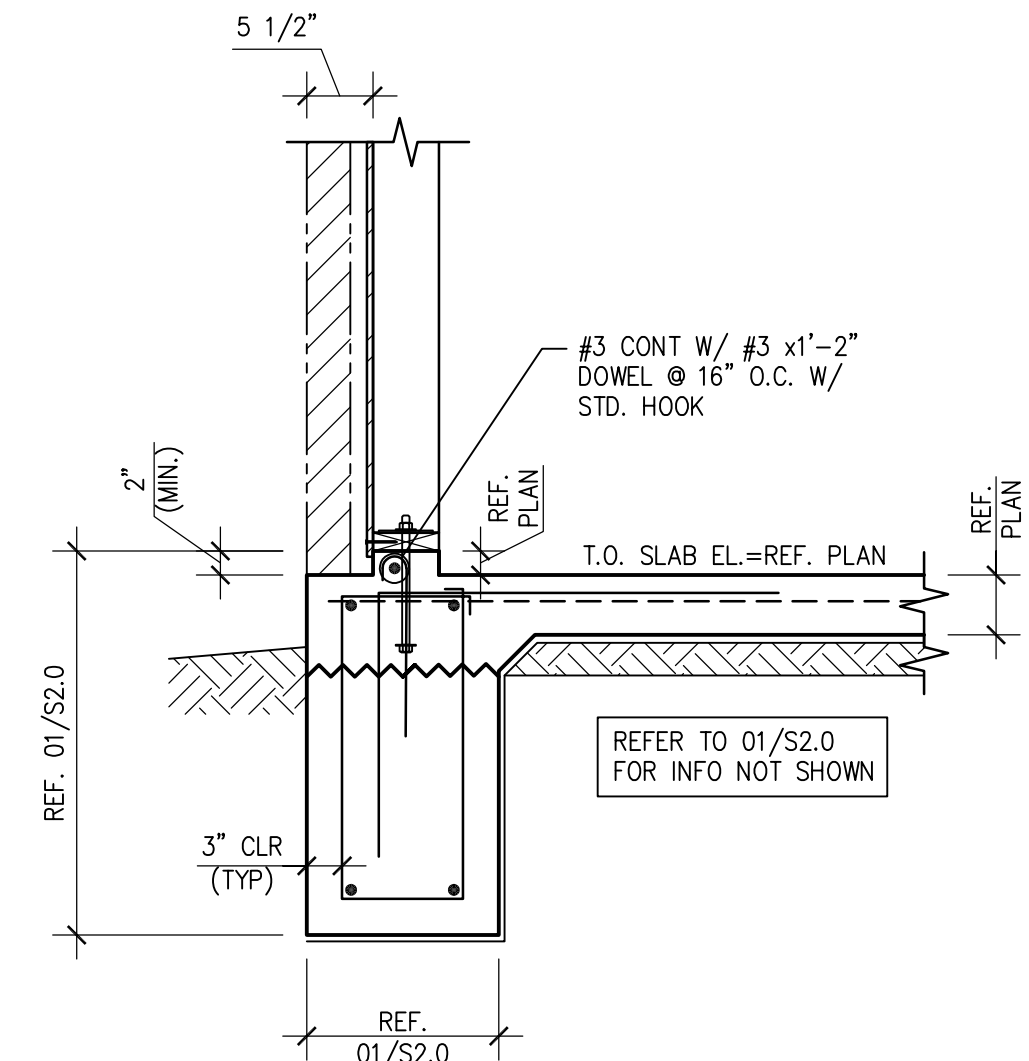
ALL SILLS & PLATES
IN CONTACT WITH
CONCRETE SHALL BE
PRESSURE TREATED.



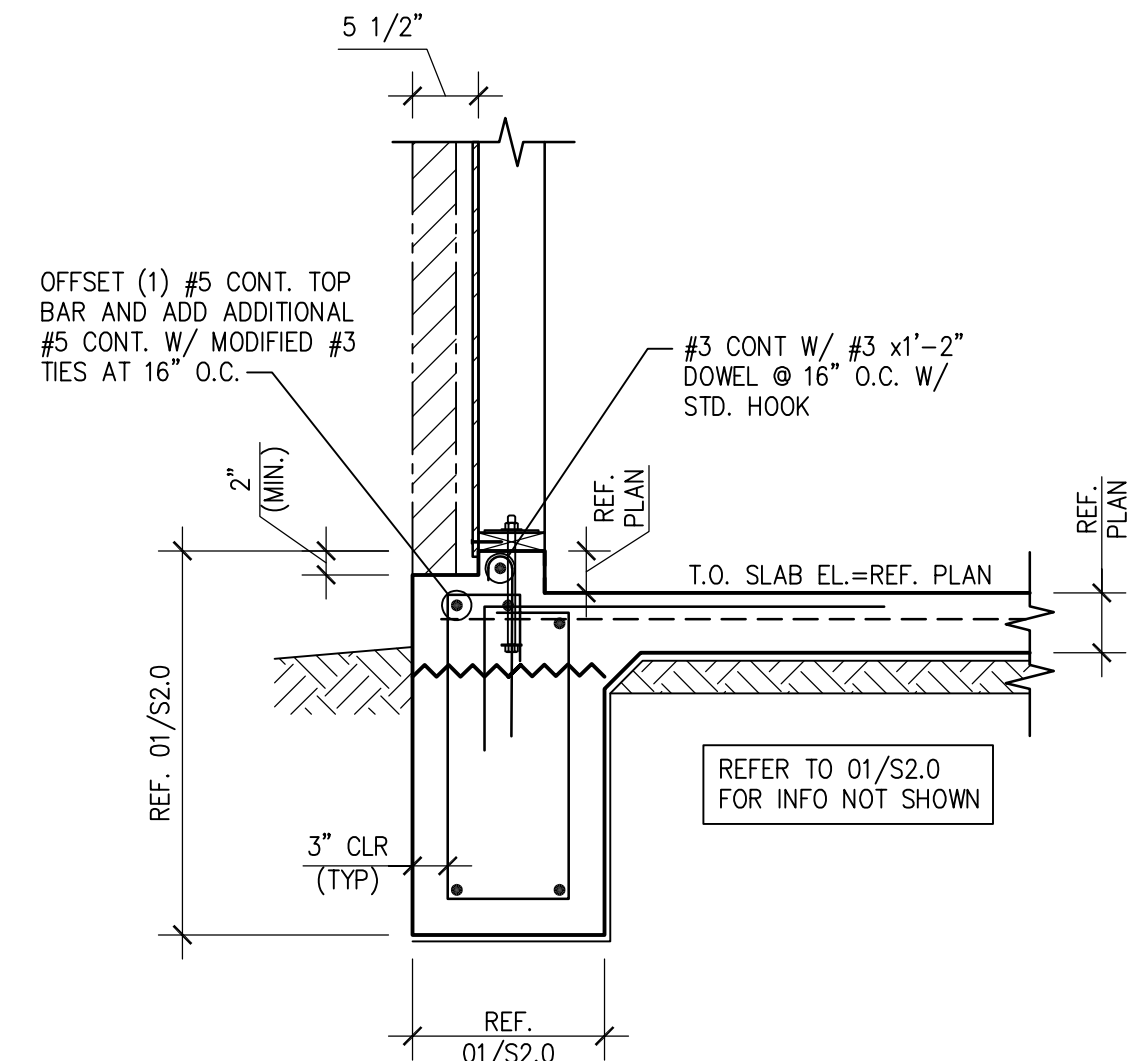
01 SECTION
SCALE: 3/4"=1'-0"



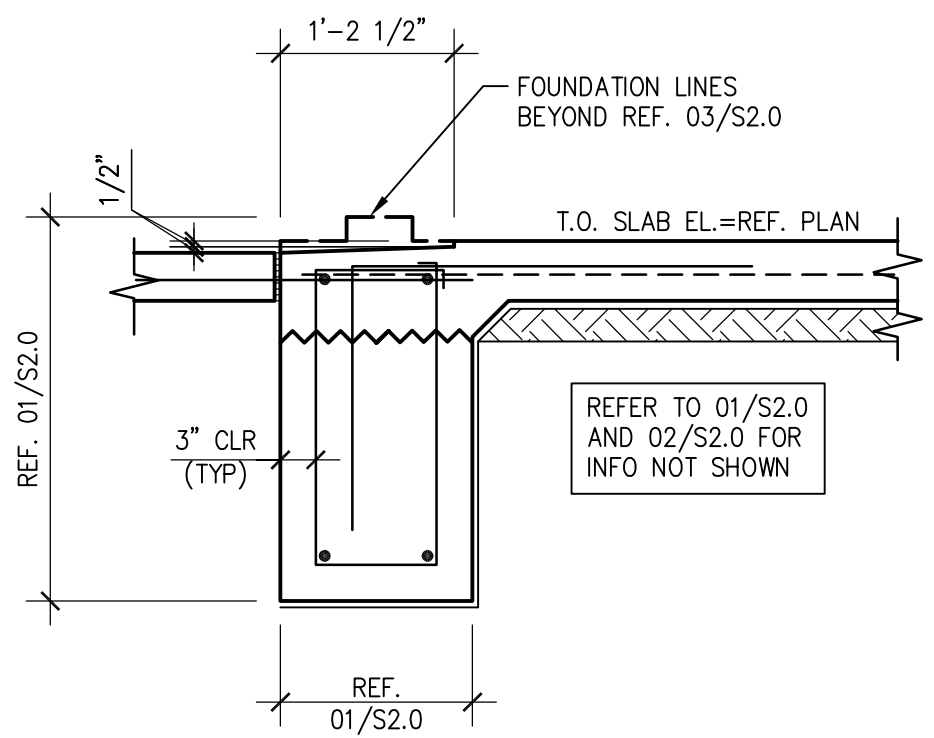
02 SECTION
SCALE: 3/4"=1'-0"



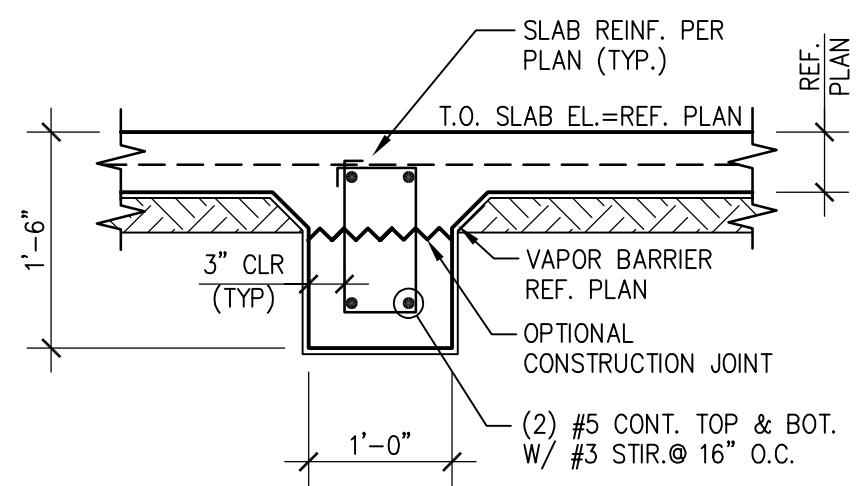
03 SECTION
SCALE: 3/4"=1'-0"



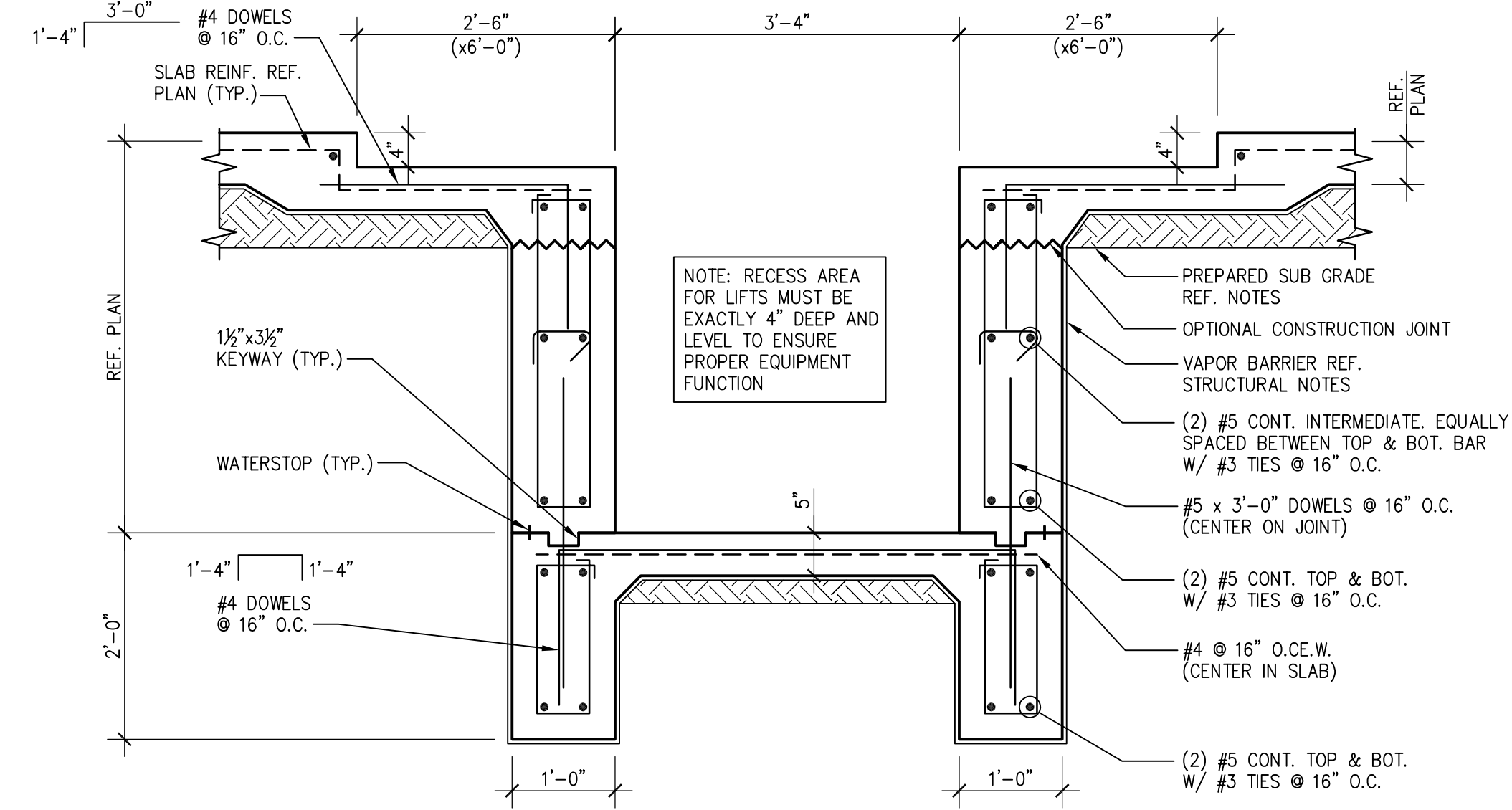
04 SECTION
SCALE: 3/4"=1'-0"



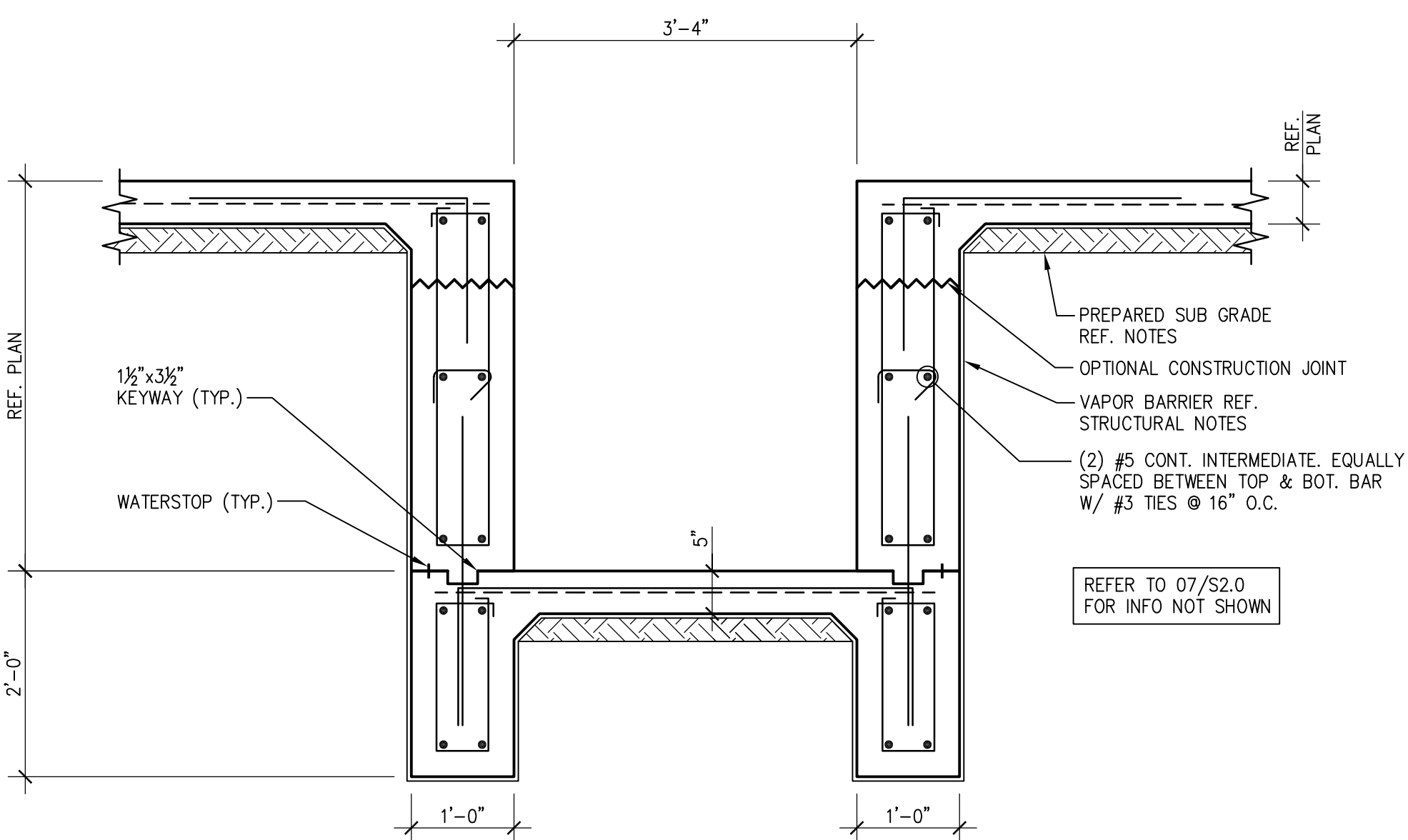
05 SECTION
SCALE: 3/4"=1'-0"



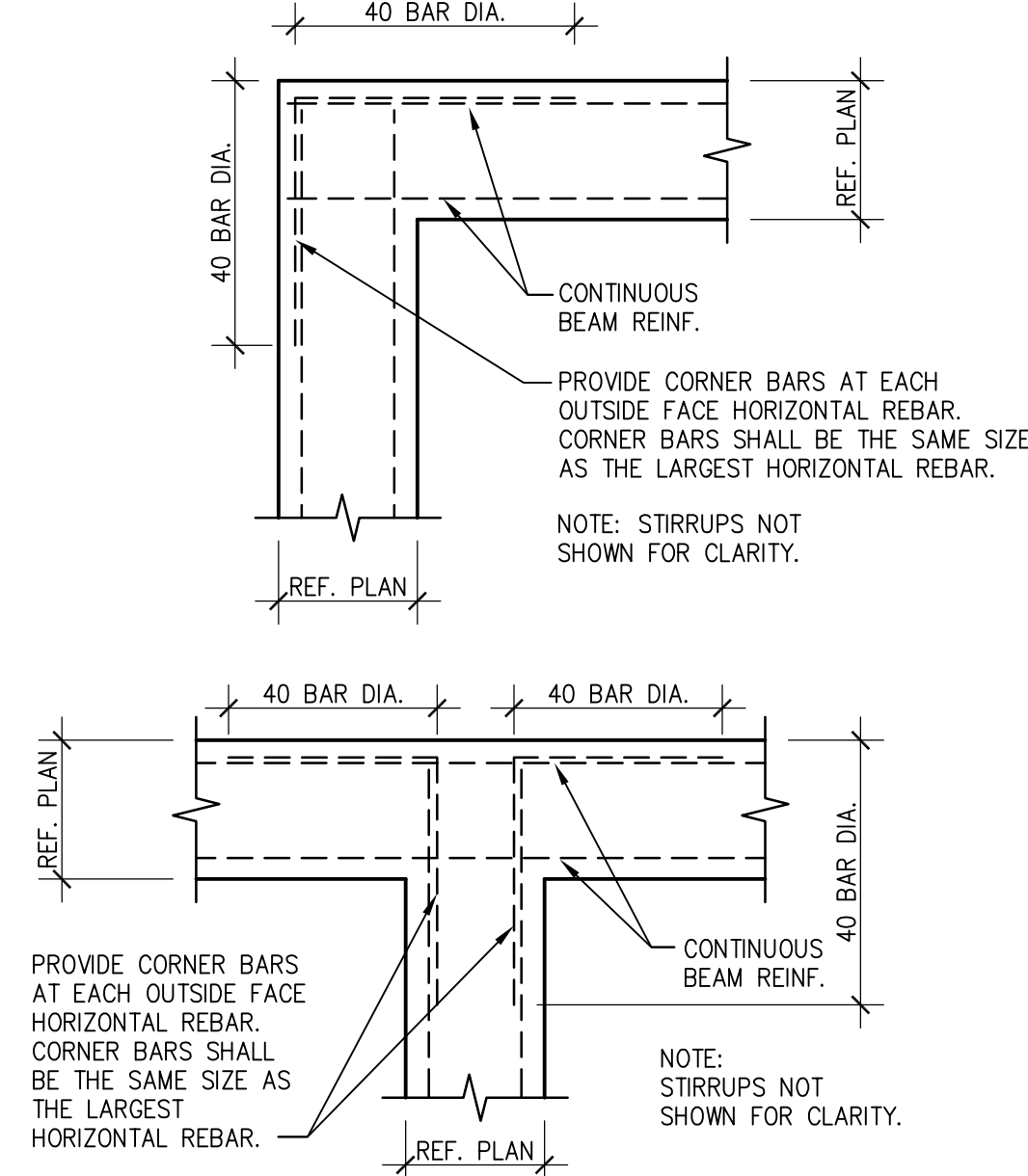
06 TYP. INTERIOR STIFFENER
SCALE: 3/4"=1'-0"



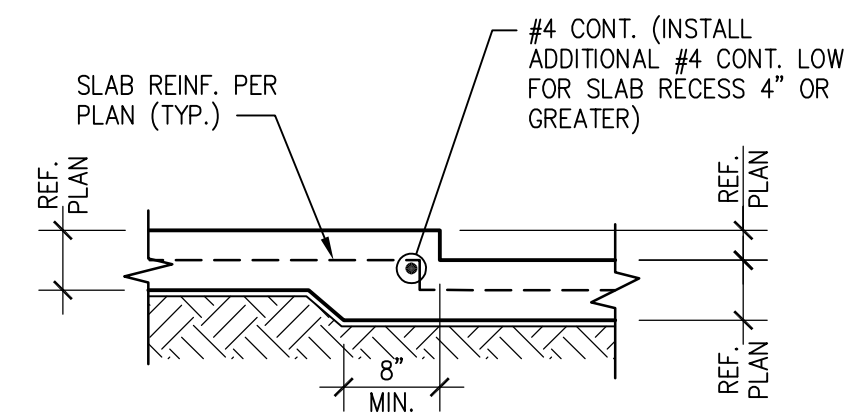
07 SECTION
SCALE: 3/4"=1'-0"



08 SECTION
SCALE: 3/4"=1'-0"



09 TYP. CORNER BAR DETAILS
SCALE: 3/4"=1'-0"



10 TYP. SLAB RECESS
SCALE: 3/4"=1'-0"



2048 N. Simmons Freeway
Dallas, Texas 75247-6103
Phone: (214) 637-6299
www.rar.net

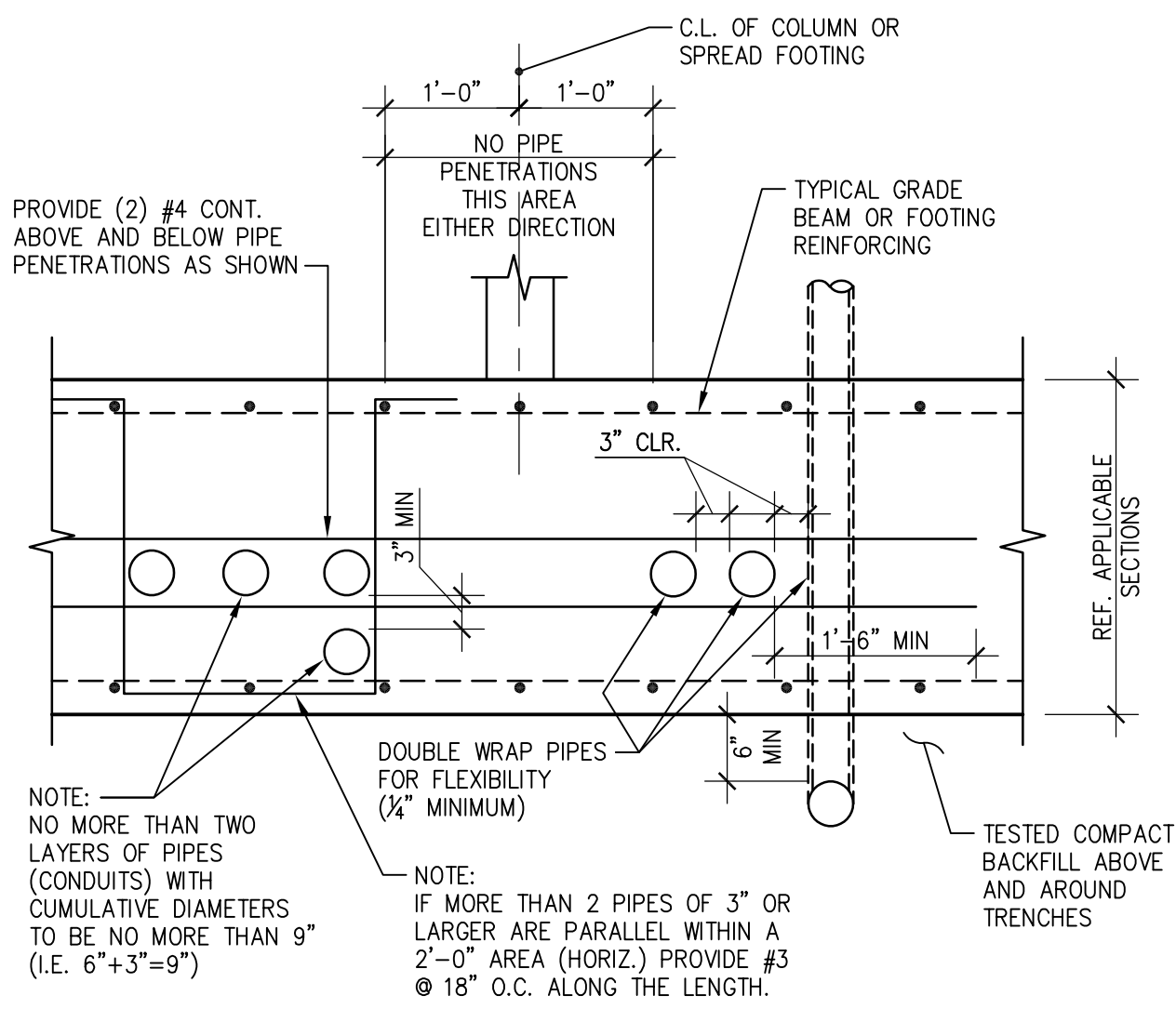
RAR
Associates, Inc.
Consulting Engineers

STRICKLAND BROTHERS
317 N BROAD STREET
WINDER, GEORGIA

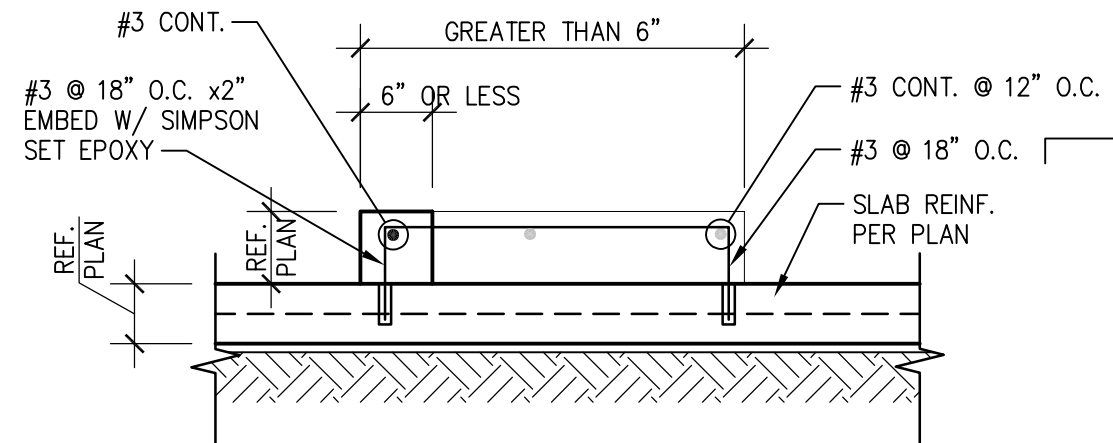
Revisions:

File Name: 22152
Project No: 22152
Date: 05/26/23
Drawn By: STAFF
Checked By: CMB

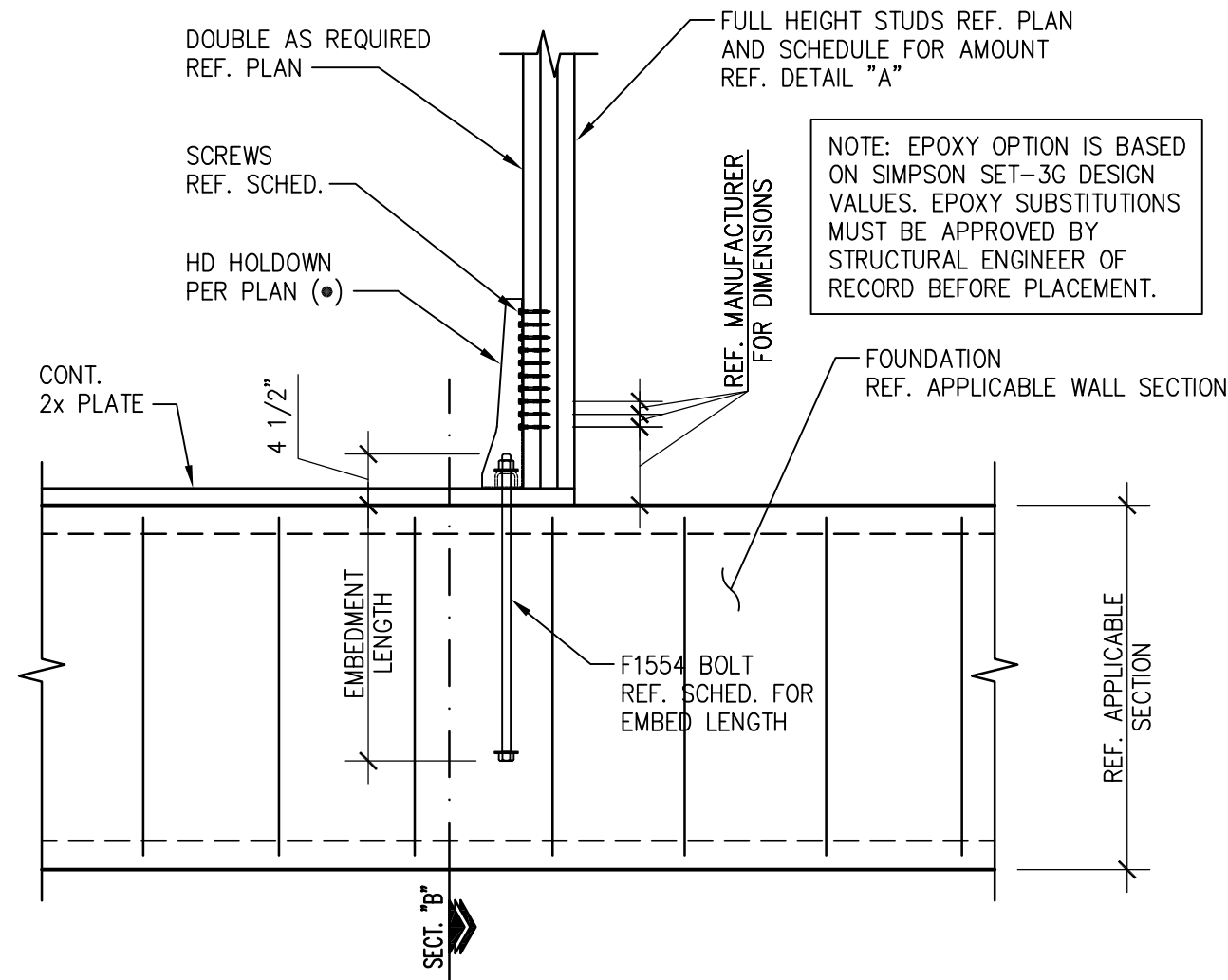
SHEET
S2.0
FOUNDATION
DETAILS



01 TYP. PENETRATION THRU FOOTINGS OR GRADE BEAMS
SCALE: 3/4"=1'-0"

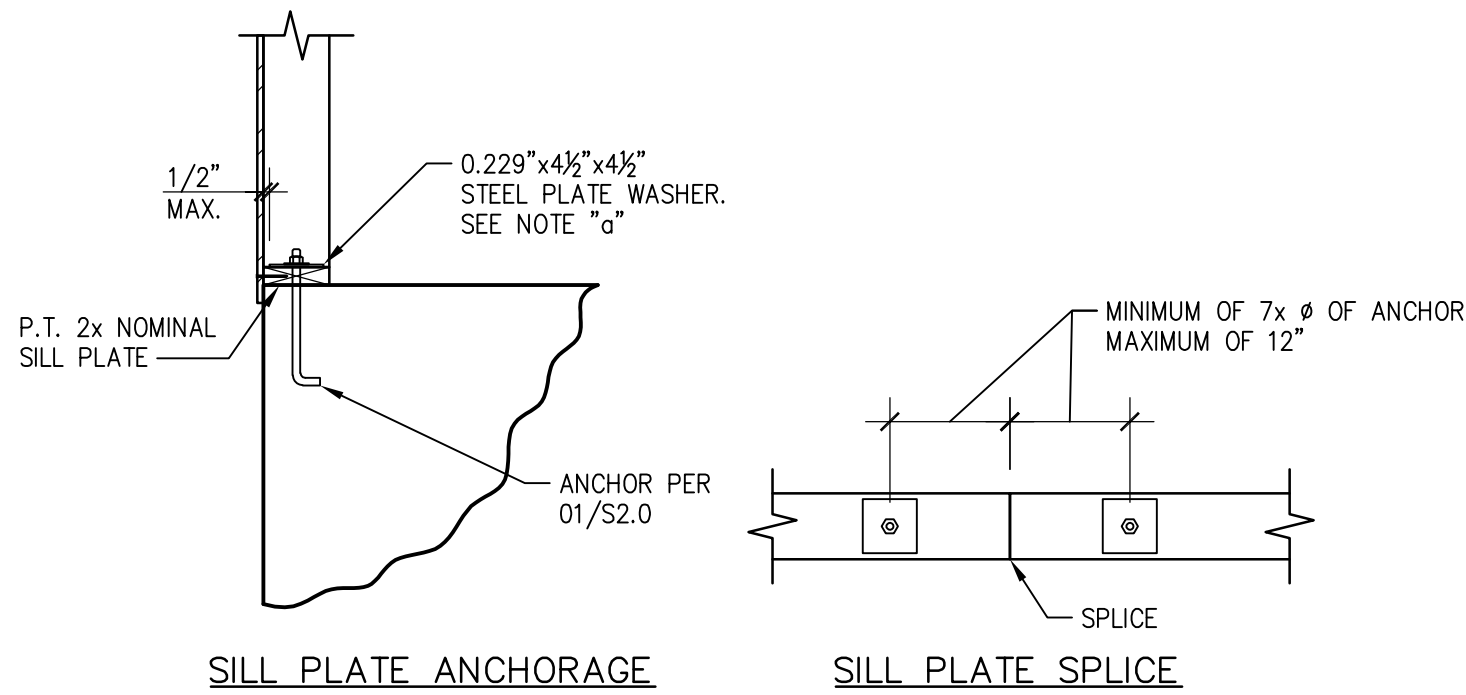


02 TYP. CURB
SCALE: 3/4"=1'-0"



HOLDOWN	POST/2x	BOLT/SCREW #	ANCH. BOLT	EDGE DISTANCE	CAST IN PLACE REQUIREMENTS BOLT EMBED	EPOXY OPTION REQUIREMENTS BOLT EMBED
HDU5-SDS2.5	3	(14) SDS 1/4"x2 1/2"	3/8" Ø	14"	1'-0"	1'-0"
HDU8-SDS2.5	3	(20) SDS 1/4"x2 1/2"	7/8" Ø	14"	1'-0"	1'-0"
HDU11-SDS2.5	4x6	(30) SDS 1/4"x2 1/2"	1" Ø	16"	1'-2"	1'-4"
HDU14-SDS2.5	6x6	(36) SDS 1/4"x2 1/2"	1" Ø	16"	1'-2"	1'-4"

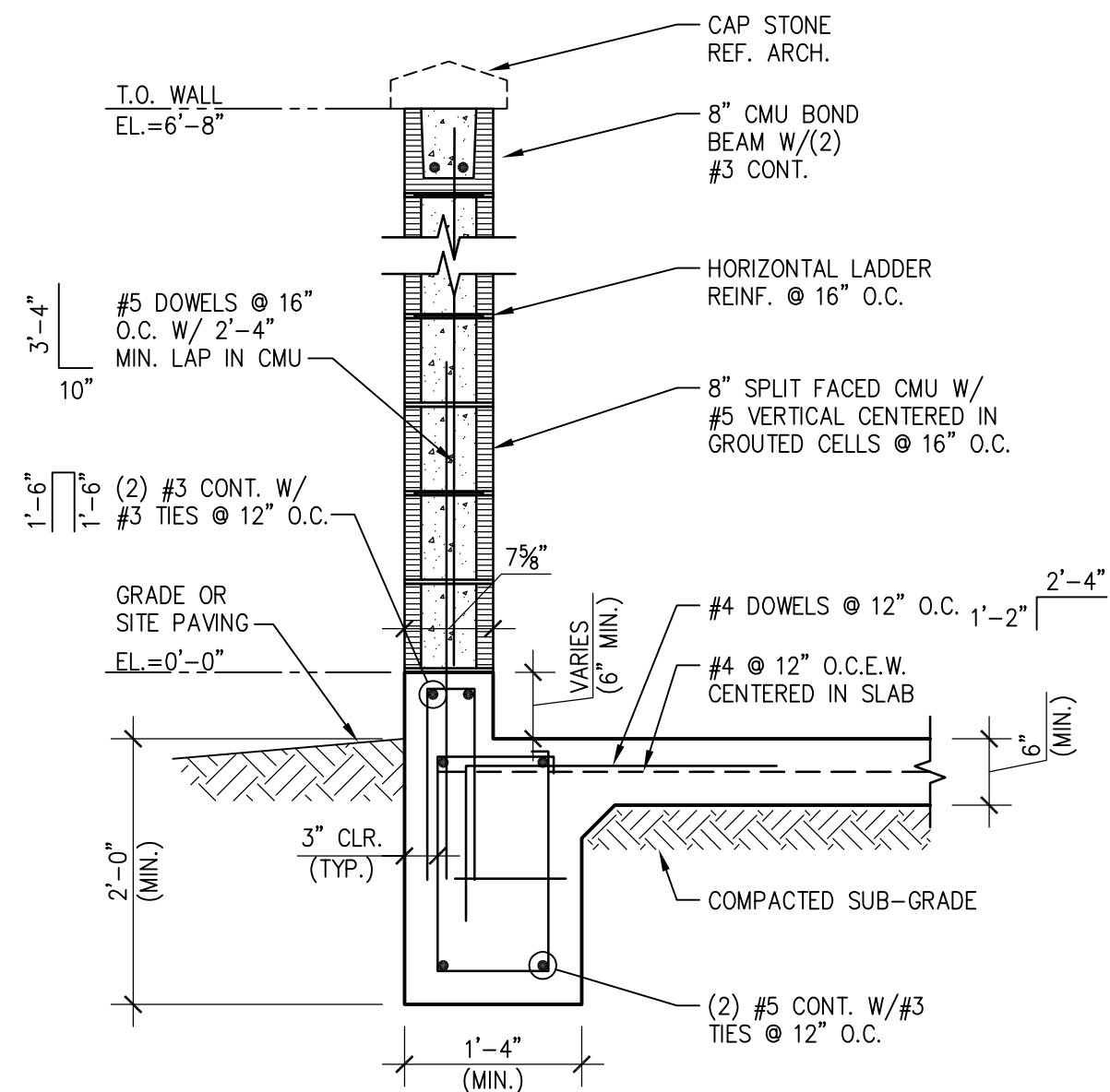
03 TYP. HOLDOWN DETAIL
SCALE: 3/4"=1'-0"



NOTES:

a. IF STANDARD CUT WASHER IS PLACED BETWEEN PLATE WASHER AND NUT, THE HOLE IN THE PLATE WASHER MAY BE DIAGONALLY SLOTTED UP TO 1 3/4" WITH WIDTH UP TO 3/16" LARGER THAN BOLT DIAMETER.

04 TYP. SILL PLATE ANCHORAGE
SCALE: 3/4"=1'-0"



06 TYP. TRASH ENCLOSURE SECTION
SCALE: 3/4"=1'-0"

EMBEDMENT LENGTHS

CONCRETE 28-DAY COMPRESSIVE STRENGTH - 3,000 PSI

BAR SIZE	STRAIGHT BARS		HOOKED BARS
	"TOP" BAR	OTHER BAR	
3	1'-10"	1'-5"	0'-9"
4	2'-5"	1'-10"	0'-11"
5	3'-0"	2'-4"	1'-2"
6	3'-7"	2'-9"	1'-5"
7	5'-3"	4'-0"	1'-8"
8	6'-0"	4'-7"	1'-10"
9	6'-8"	5'-2"	2'-1"
10	7'-5"	5'-9"	2'-4"
11	8'-2"	6'-4"	2'-6"

GRADE 60 REINFORCEMENT. MINIMUM LENGTHS SHOWN ABOVE SHALL BE USED UNLESS OTHERWISE NOTED ON THE PLANS. "TOP" BARS ARE HORIZONTAL BARS PLACED SUCH THAT MORE THAN 12 INCHES OF FRESH CONCRETE IS CAST IN THE MEMBER BELOW THE BAR.

LAP SPLICE LENGTHS

CONCRETE 28-DAY COMPRESSIVE STRENGTH - 3,000 PSI

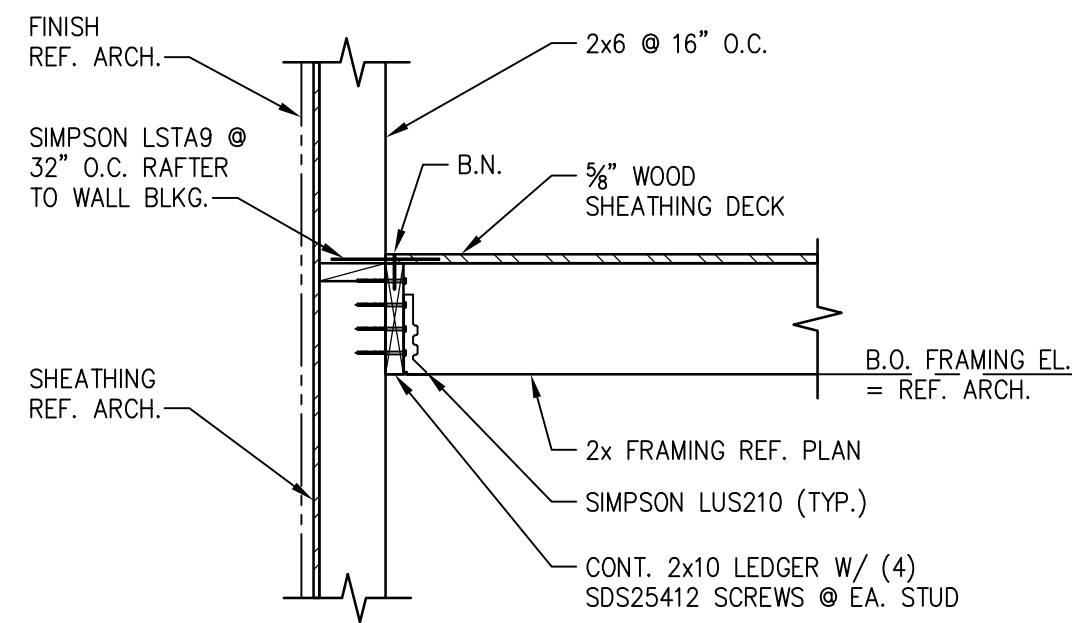
BAR SIZE	SPACING 6" OR GREATER		SPACING LESS THAN 6"	
	"TOP" BAR	OTHER BAR	"TOP" BAR	OTHER BAR
3	2'-5"	1'-10"	2'-11"	2'-3"
4	3'-2"	2'-5"	3'-10"	2'-11"
5	3'-11"	3'-1"	4'-9"	3'-9"
6	4'-8"	3'-7"	5'-8"	4'-4"
7	6'-10"	5'-3"	8'-3"	6'-4"
8	7'-10"	6'-0"	9'-5"	7'-3"
9	8'-8"	6'-9"	10'-5"	8'-2"
10	9'-8"	7'-6"	11'-8"	9'-0"
11	10'-8"	8'-3"	12'-10"	9'-11"

GRADE 60 REINFORCEMENT. MINIMUM LENGTHS SHOWN ABOVE SHALL BE USED UNLESS OTHERWISE NOTED ON THE PLANS. "TOP" BARS ARE HORIZONTAL BARS PLACED SUCH THAT MORE THAN 12 INCHES OF FRESH CONCRETE IS CAST IN THE MEMBER BELOW THE BAR.

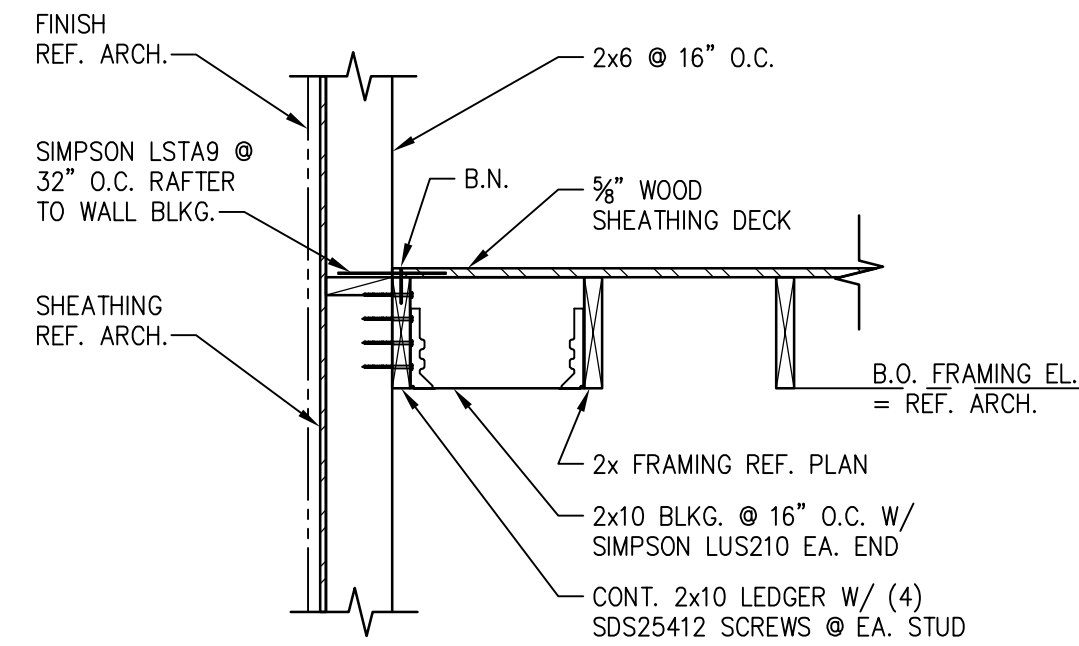
Revisions:

File Name: 22152
Project No: 22152
Date: 05/26/23
Drawn By: STAFF
Checked By: CMB

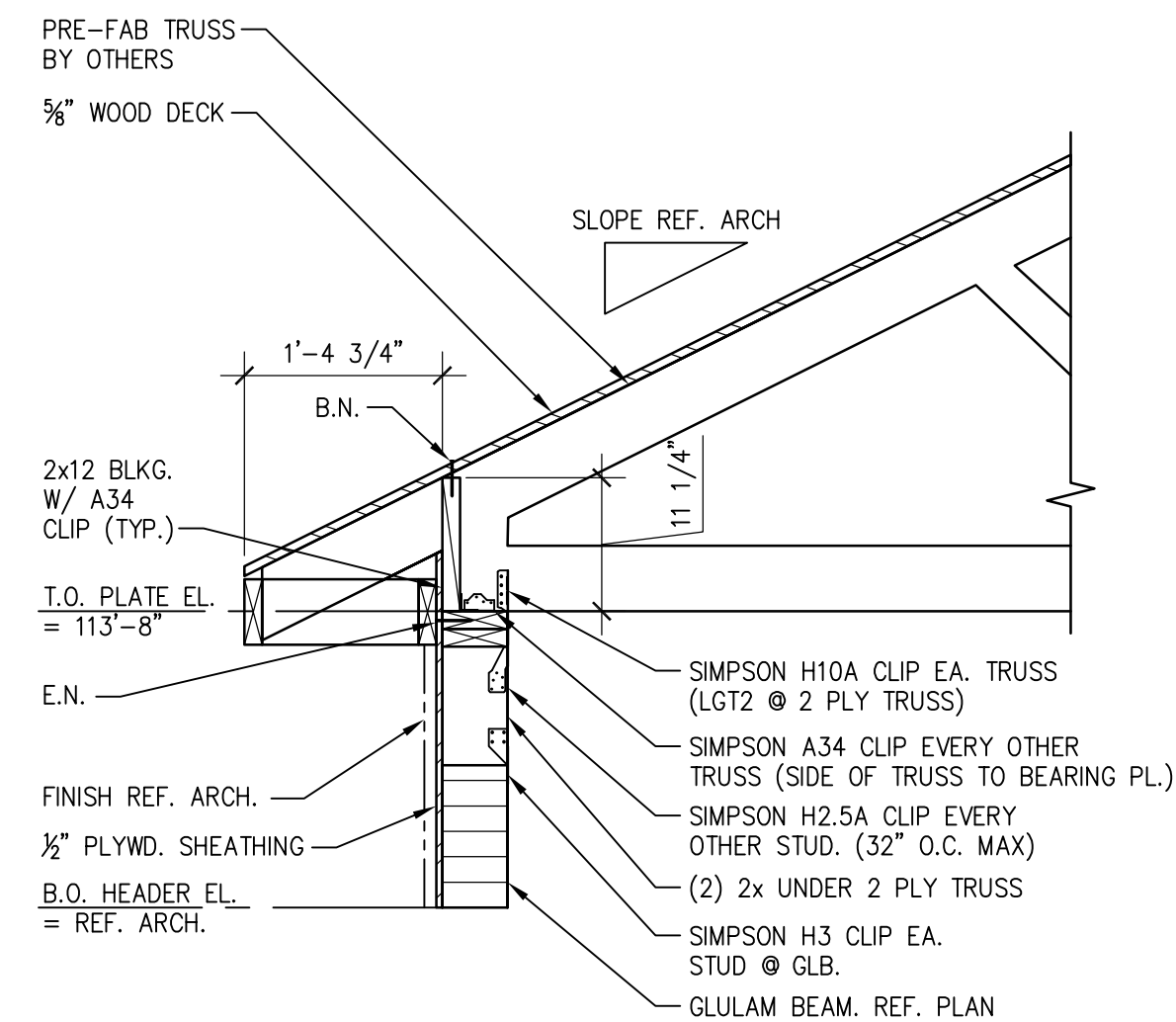
SHEET
S2.1
FOUNDATION
DETAILS



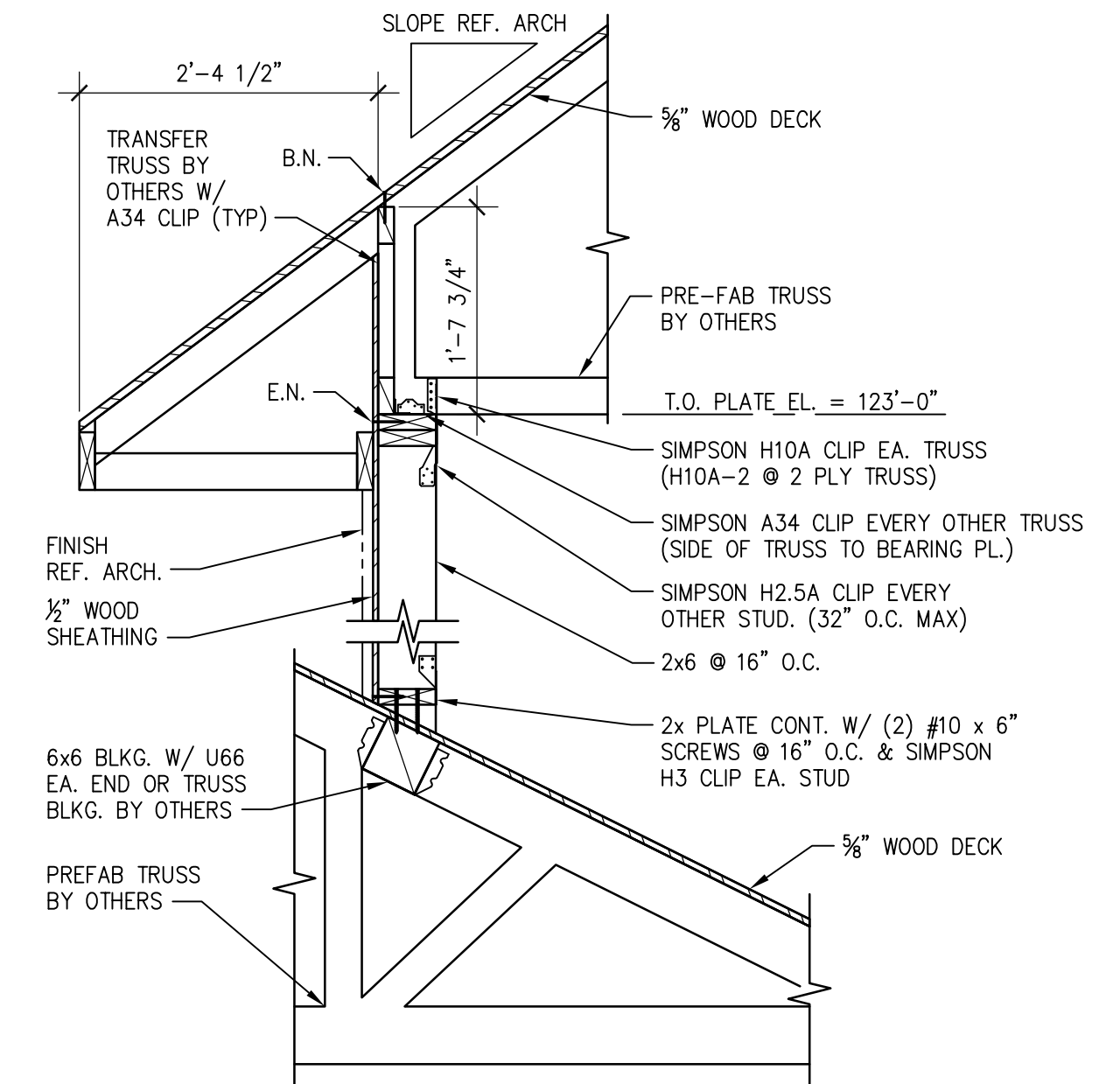
01 SECTION
SCALE: 3/4"=1'-0"



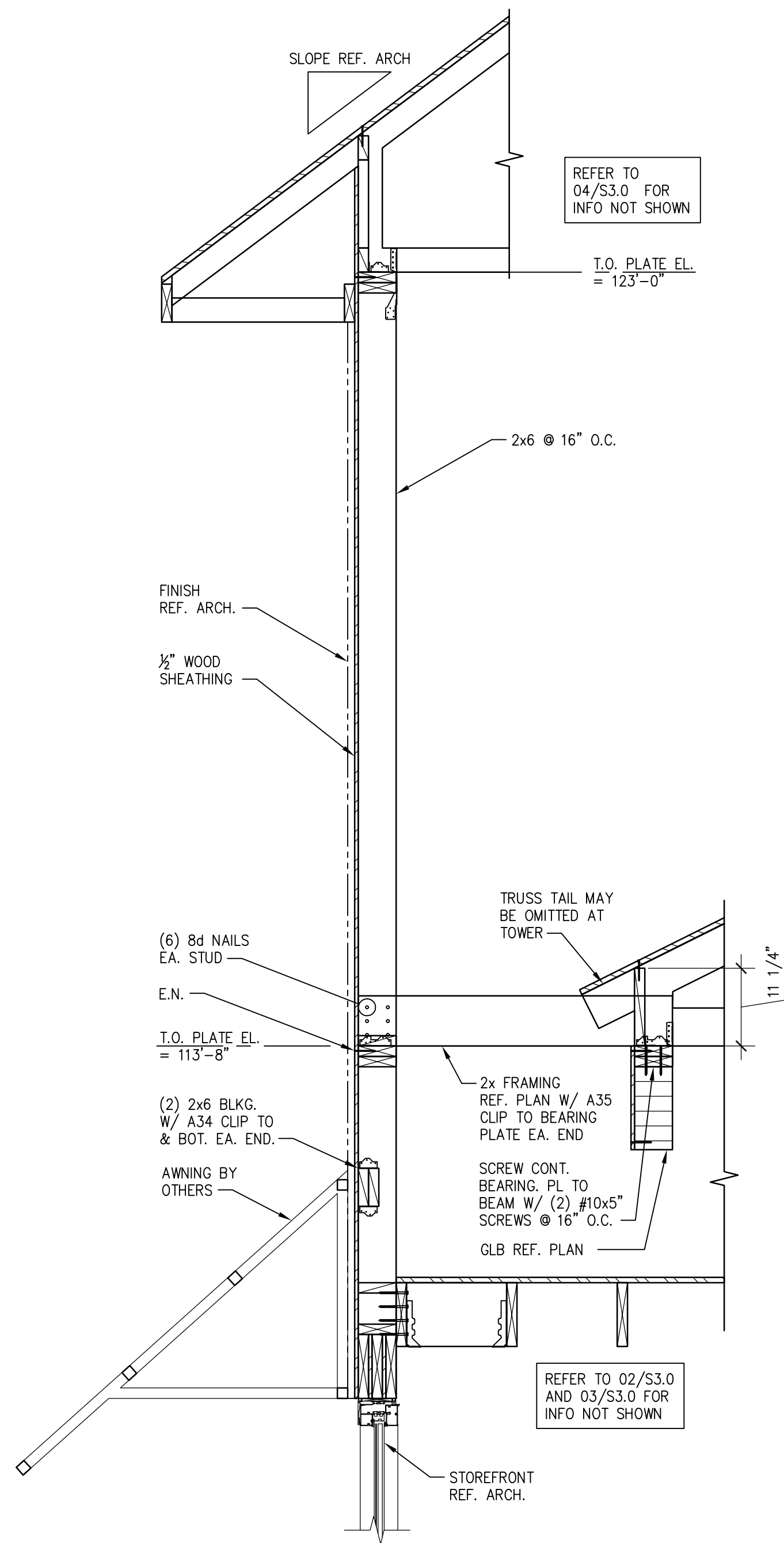
02 SECTION
SCALE: 3/4"=1'-0"



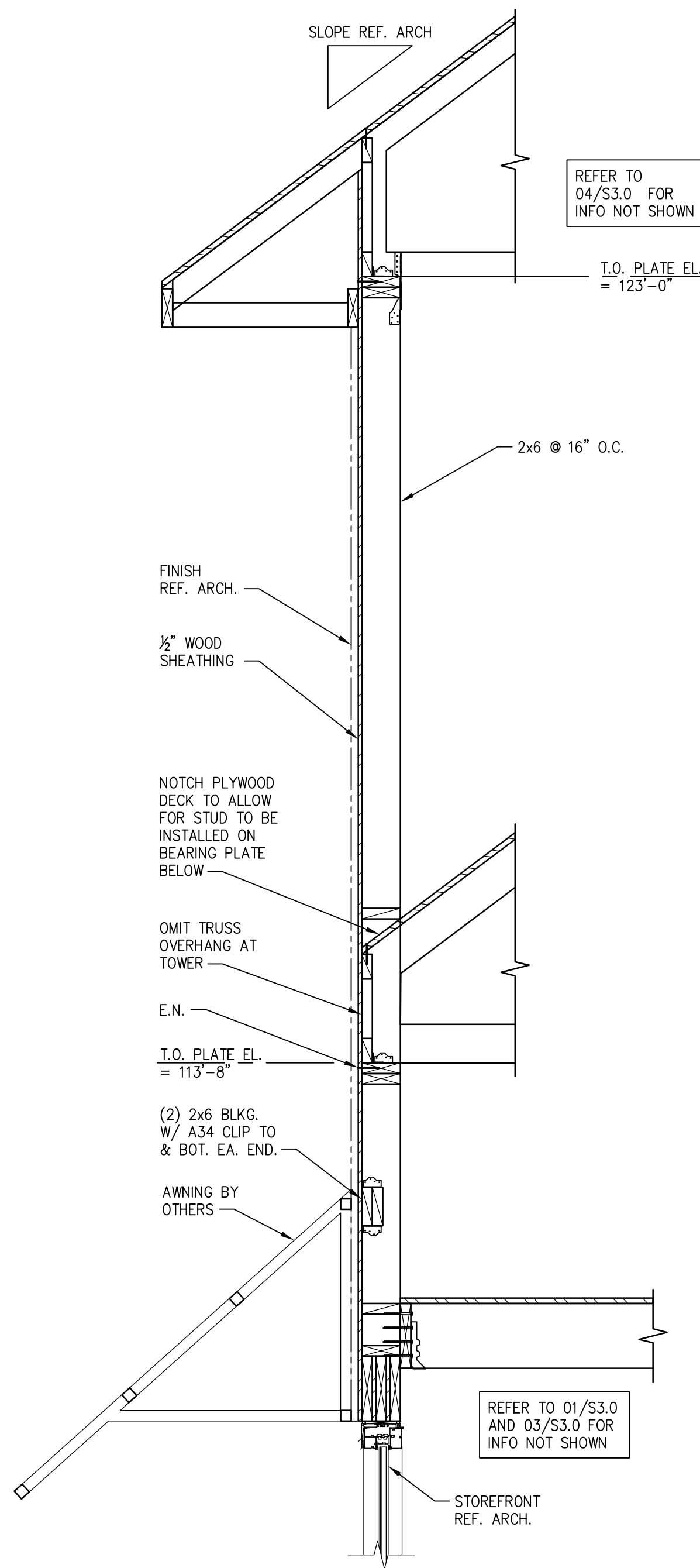
03 SECTION
SCALE: 3/4"=1'-0"



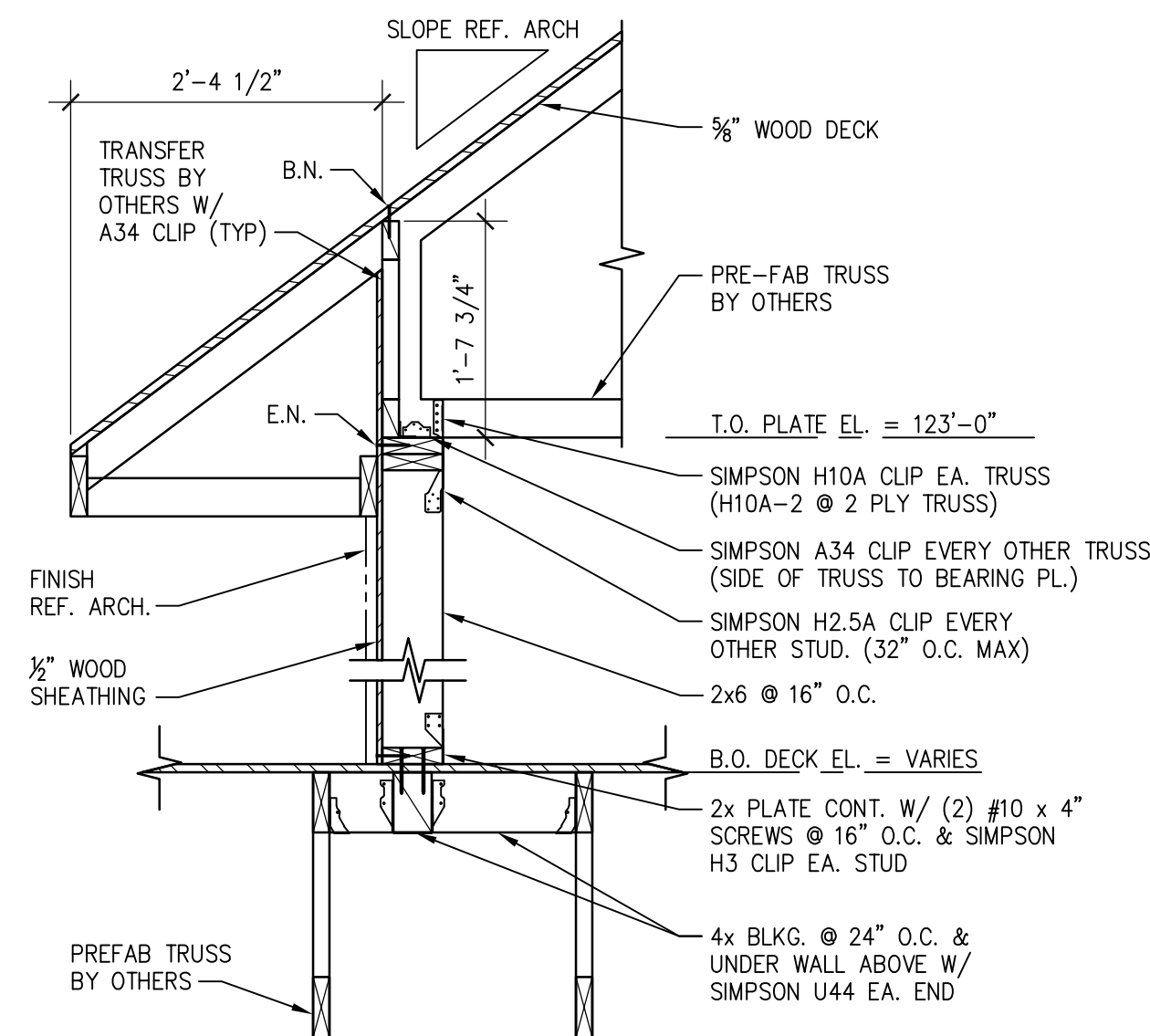
04 SECTION
SCALE: 3/4"=1'-0"



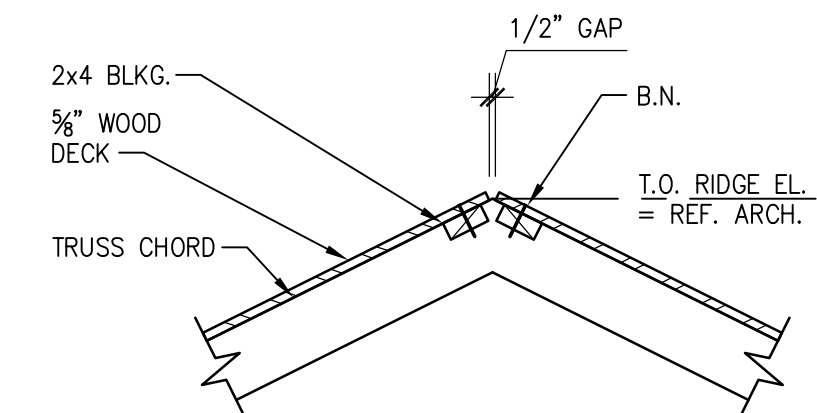
07 SECTION
SCALE: 3/4"=1'-0"



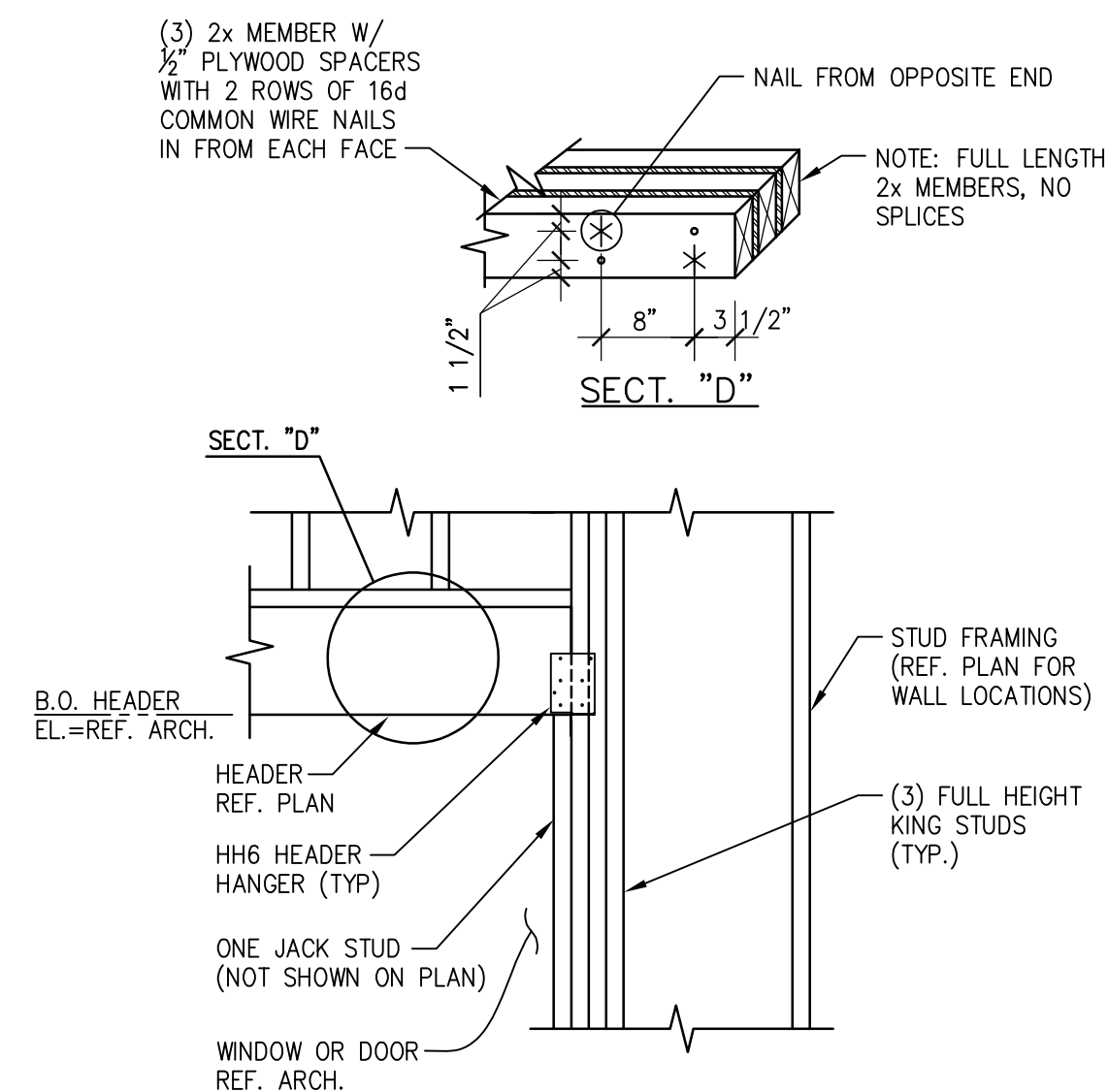
08 SECTION
SCALE: 3/4"=1'-0"



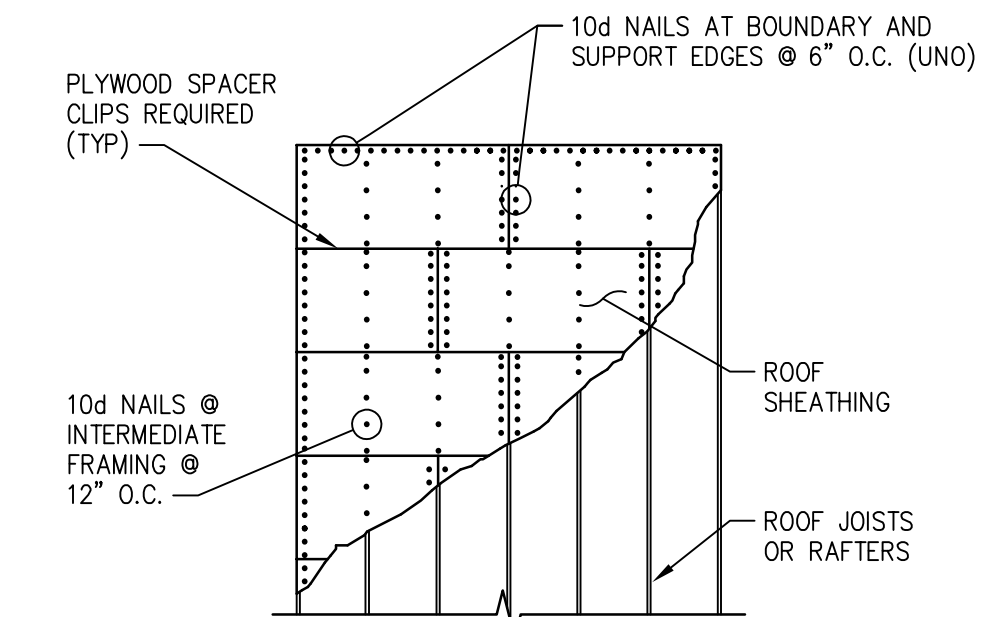
05 SECTION
SCALE: 3/4"=1'-0"



06 SECTION
SCALE: 3/4"=1'-0"



09 SECTION
SCALE: 3/4"=1'-0"



10 ROOF DIAPHRAGM NAILING
SCALE: NONE



2048 N. Strickland Freeway
Dallas, Texas 75247-6103
Phone: (214) 637-6299
www.rar.net

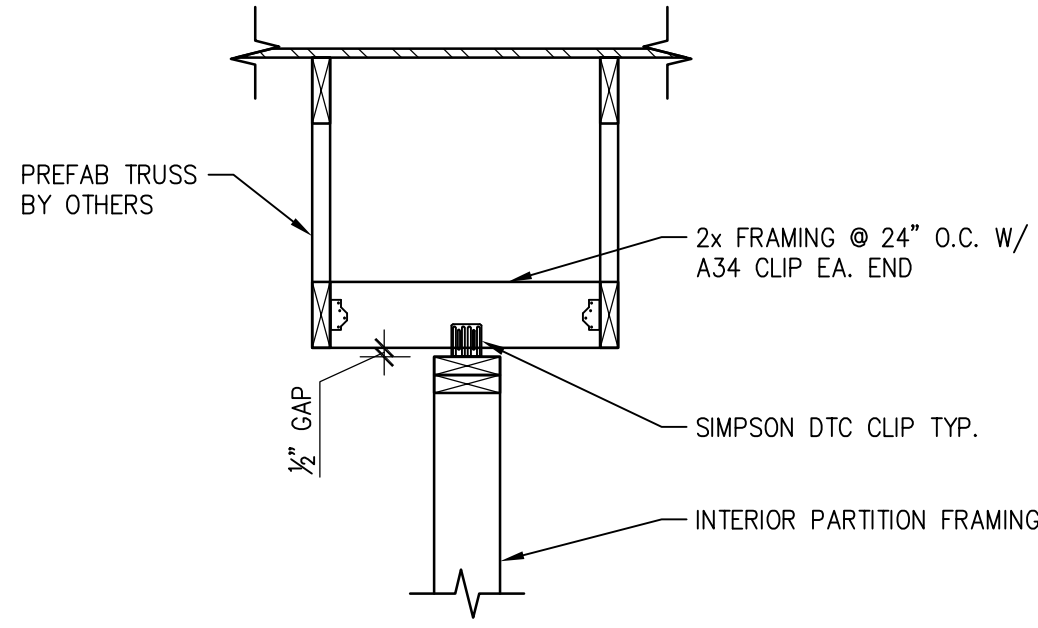
Roberts
Associates, Inc.
Consulting Engineers

STRICKLAND BROTHERS
317 N BROAD STREET
WINDER, GEORGIA

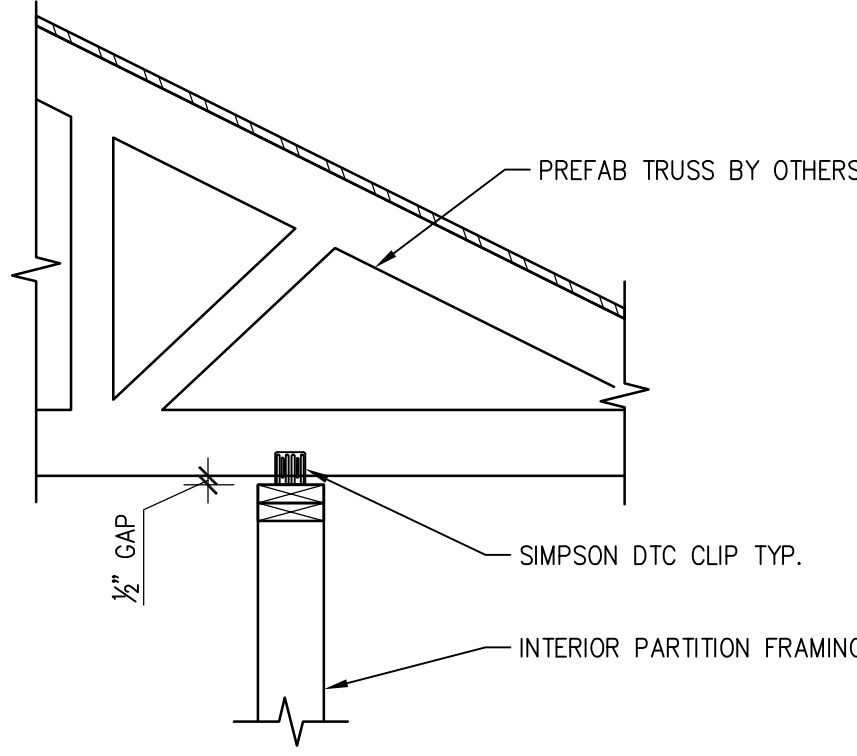
Revisions:

File Name: 22152	22152	
Project No:	05/26/23	STAFF
Date:		CMB
Drawn By:		
Checked By:		

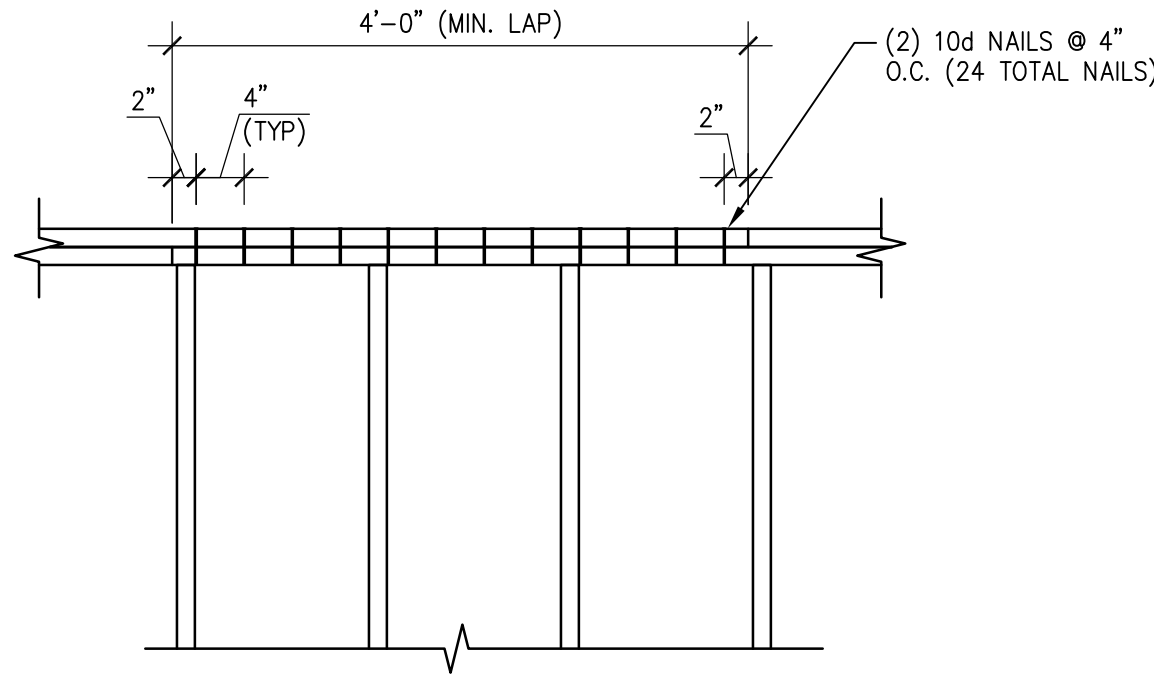
SHEET
S3.0
FRAMING
DETAILS



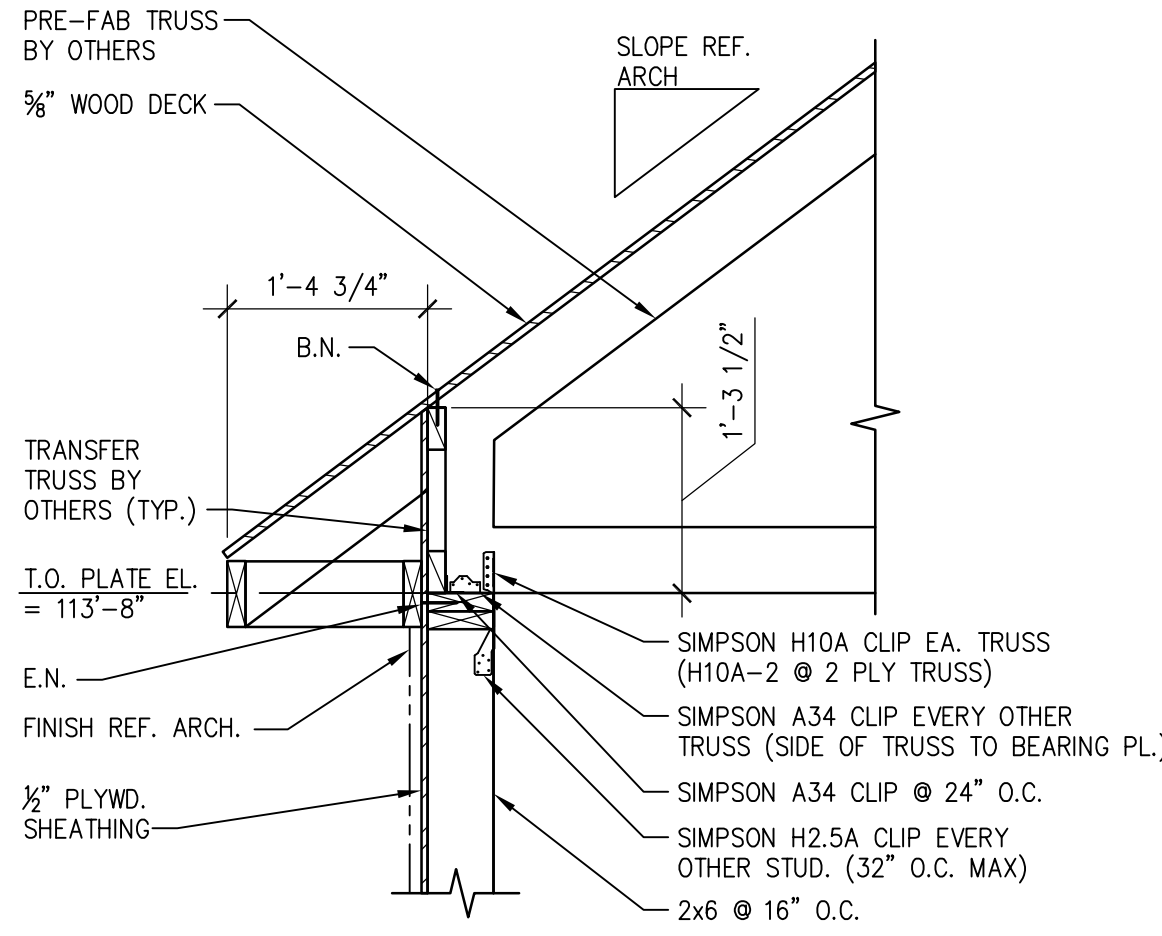
01 NON LOAD BEARING PARTITION
SCALE: 3/4"=1'-0"



02 NON LOAD BEARING PARTITION
SCALE: 3/4"=1'-0"



03 TYP. BEARING PLATE SPLICE
SCALE: 3/4"=1'-0"



04 SECTION
SCALE: 3/4"=1'-0"

Revisions:

File Name: 22152
Project No: 22152
Date: 05/26/23
Drawn By: STAFF
Checked By: CMB

SHEET
S3.1
FRAMING
DETAILS

STRICKLAND BROTHERS
317 N BROAD STREET
WINDER, GEORGIA

Strickland Brothers
2048 N. Stemmons Freeway
Dallas, Texas 75247-6103
Phone: (214) 637-6299
www.rbr.net
Associates, Inc.
Consulting Engineers

PROFESSIONAL
ENGINEER
No. 21506
ANDREW J. LEBOLT