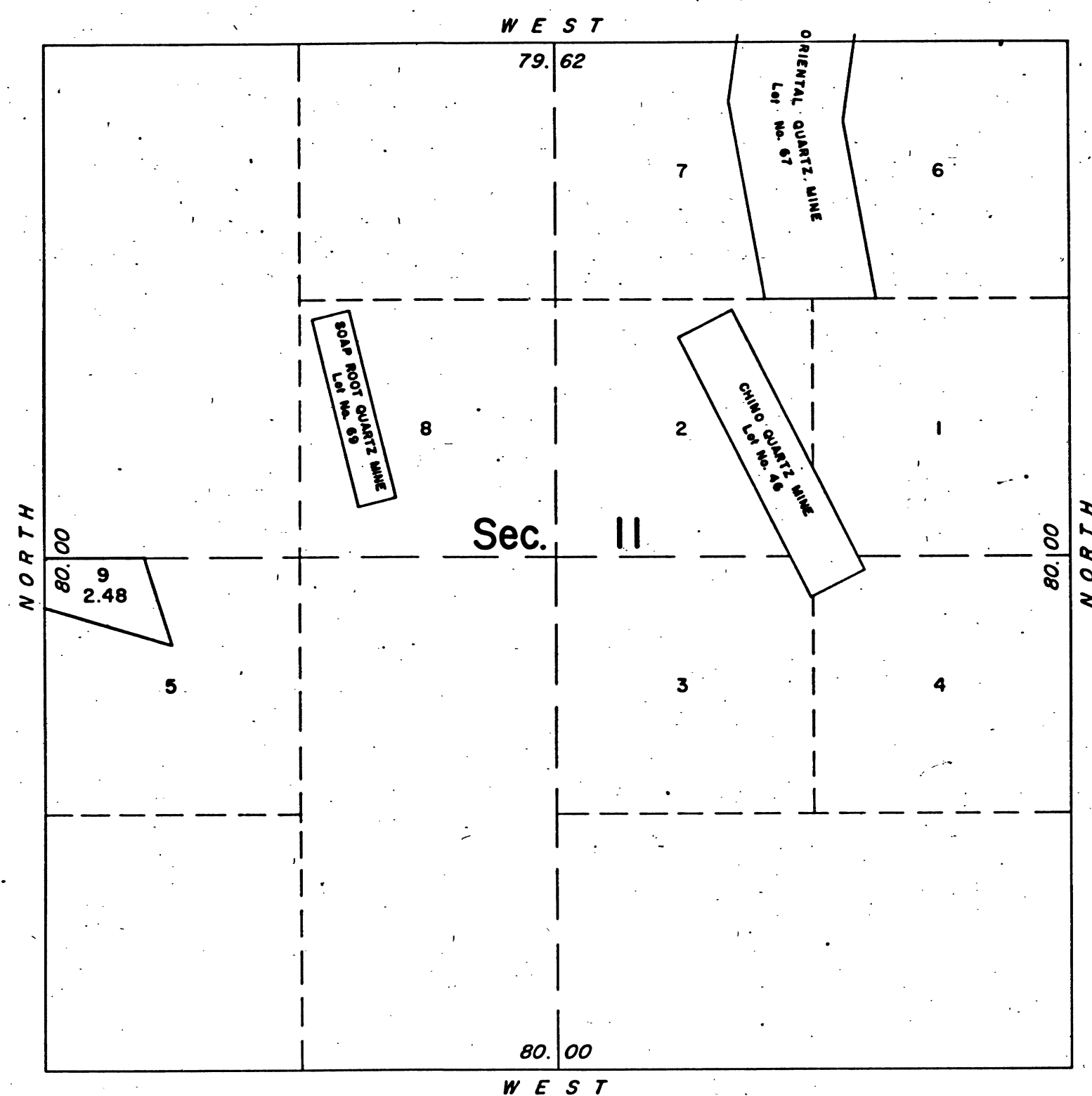


TOWNSHIP 6 NORTH, RANGE 13 EAST, OF THE MOUNT DIABLO MERIDIAN, CALIFORNIA
SUPPLEMENTAL PLAT



This plat, showing amended lottings in Section 11, Township 6 North, Range 13 East, Mount Diablo Meridian, California, is based upon the township plat approved May 2, 1871 and the plats dated January 22, 1885 and August 4, 1888.

UNITED STATES DEPARTMENT OF THE INTERIOR
BUREAU OF LAND MANAGEMENT
Washington, D. C. June 10, 1960

This plat, showing amended lottings, is based upon the official records, and having been correctly prepared in accordance with the regulations, is hereby accepted.

For the Director

James O. Clement

Cadastral Engineering Staff Officer

BLM 290

41 531-G

T. 6 N., R. 13 E., MDM