

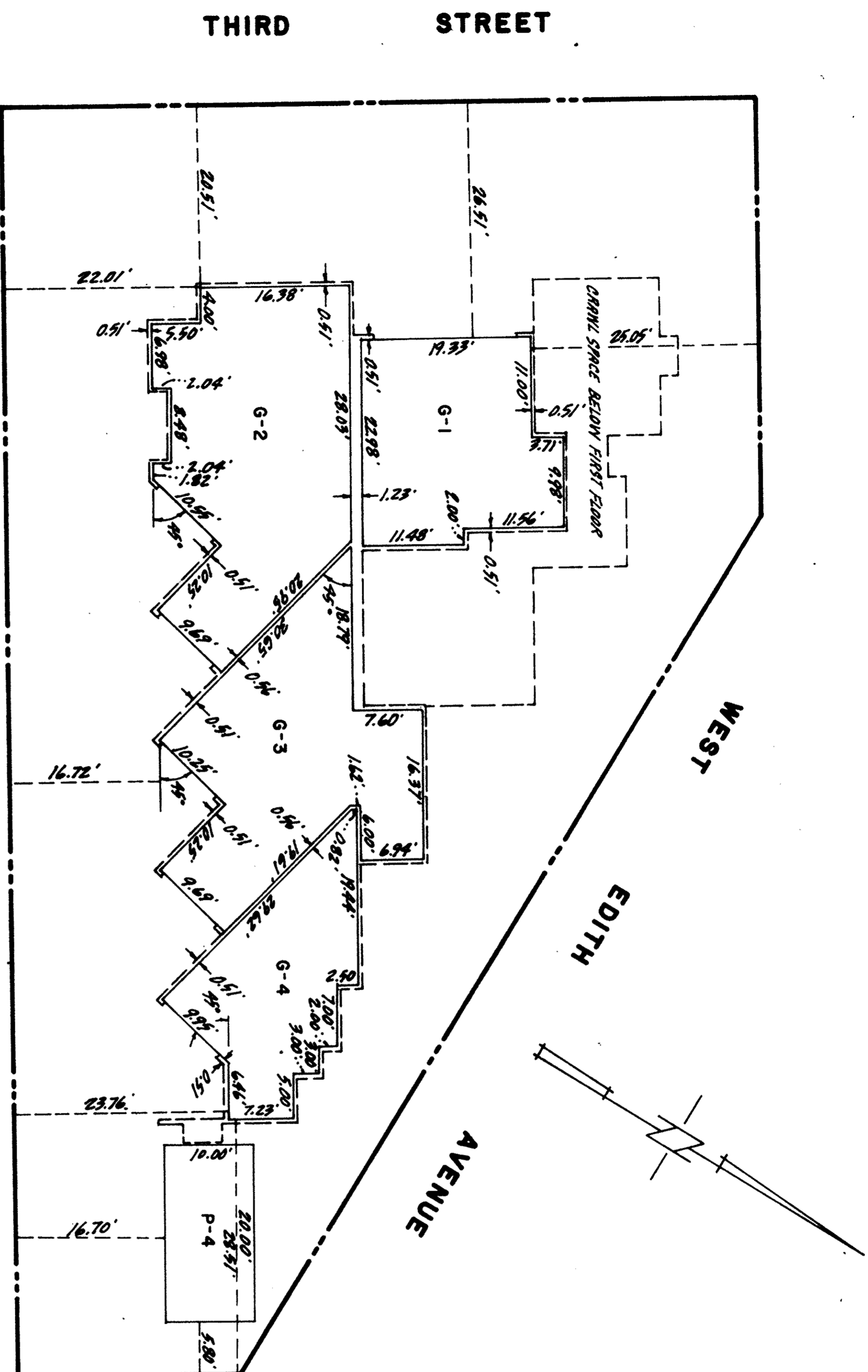
NOTES AND LEGEND

ALL DIMENSIONS ARE TO INSIDE UNFINISHED SURFACE AT THE SHEETROCK ABOVE THE CONCRETE STEM WALL, EXCEPT FOR THE "PARKING SPACE"

ALL DISTANCES & DIMENSIONS ARE IN FEET & DECIMALS THEREOF.

THE DISTINCTIVE BORDER LINE INDICATES THE BOUNDARY OF LAND SUBDIVIDED BY THIS MAP. (LOT 1 INCLUDES ALL OF THE AREA WITHIN THE BOUNDARY.)

G INDICATES "GARAGE"
P INDICATES "PARKING SPACE"



BASEMENT FLOOR

SCALE: 1"=10'

TRACT NO. 8257 CEDAR MANOR

CONDOMINIUM SUBDIVISION AND PLAN
BEING ALL OF LOT 22 AND A PORTION OF LOT 21, BLOCK 4,
"MAP NO. 1 OF THE TOWN OF LOS ALTOS," RECORDED IN
BOOK "L" OF MAPS, PAGE 99, SANTA CLARA CO. RECORDS
CITY OF LOS ALTOS, CALIFORNIA

AUGUST, 1989

SMITH RANDETT FOLK & STOCK, INC.
CIVIL ENGINEERS AND LAND SURVEYORS
REDWOOD CITY CALIFORNIA

SHEET 3 OF 5 SHEETS