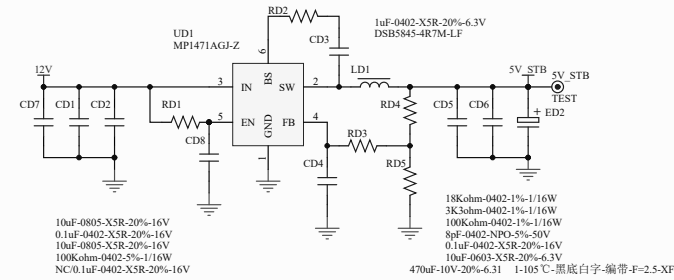
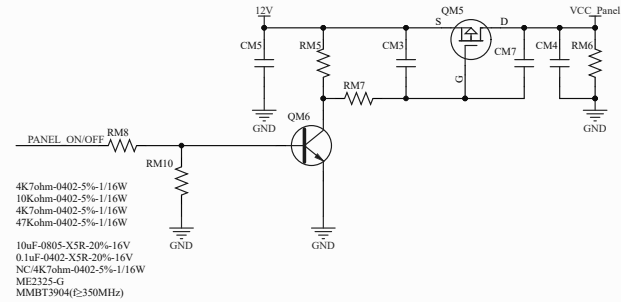


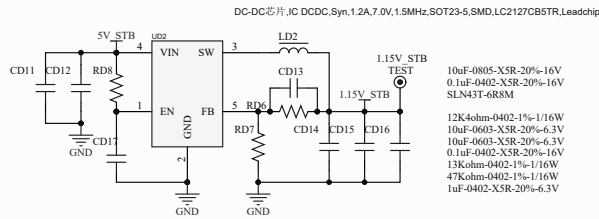
MP1471AGJ-Z电路



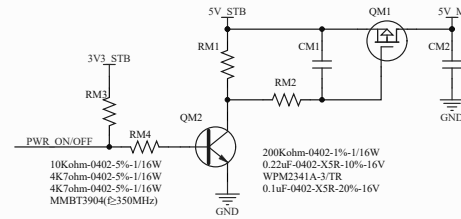
PANEL驱屏电压



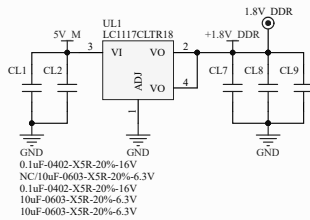
核供电电路



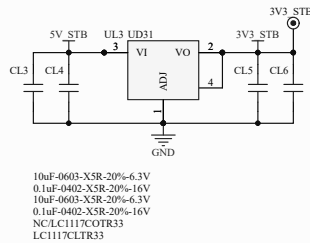
5V_M开关电路



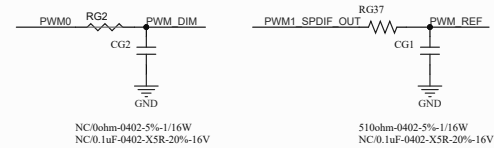
+1.8V_DDR电路



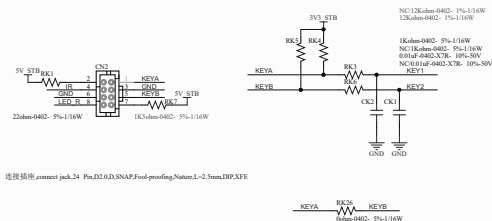
3V3_STB电路



背光控制

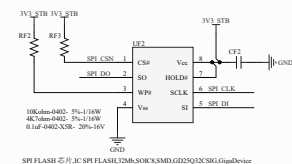


IR&KEY电路



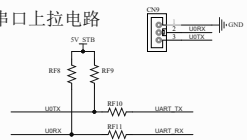
连接插座,connect jack,24 Pin,D2.0,D,SNAP,Fool-proofing,Nature,L-2.5mm,DIP,XFE

Flash电路



SPI FLASH 芯片, IC SPI FLASH, 32Mb, SO8CK, SMD, GD25Q32CSIG, GigaDevice

串口上拉电路

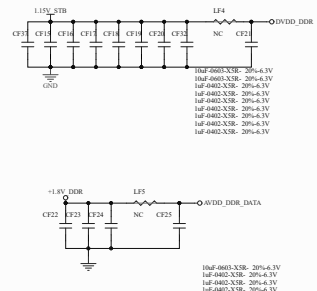
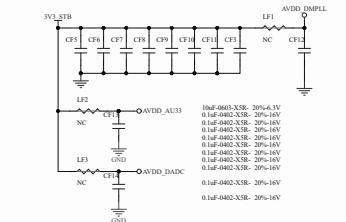


连接插座,correct jack,3Pin,D2.0,D,SNAP,Nature,L=2.8mm,DIP,AMA

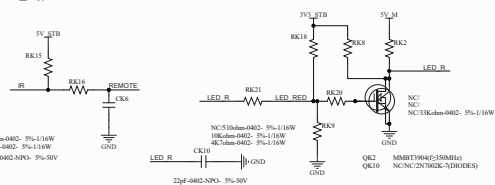
时钟产生电路



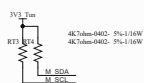
NC1Meim-0402- 5%-1/16W
30pf-F-0402-NPO- 5%-50V
30pf-F-0402-NPO- 5%-50V
无源标准封装晶体振荡器,SPXO,24MHz, 20PPM,20pf,HIC-49SMD,SMD,49SMD 24.000MHz,JWT



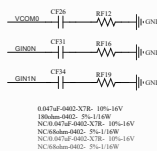
IR-LED电路



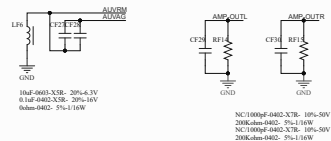
I2C电路



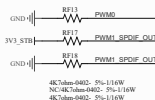
VIDEO匹配电路



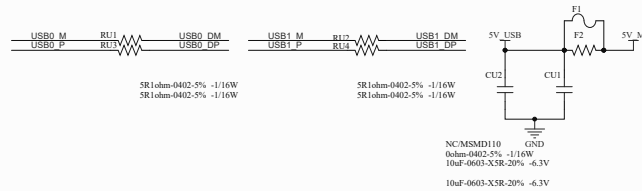
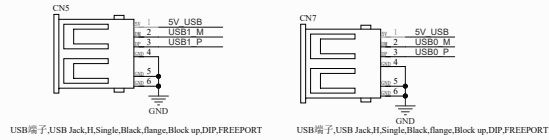
AUDIO匹配电路



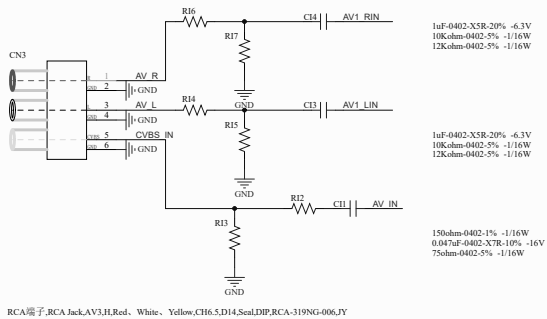
CHIP_CONFIG电路



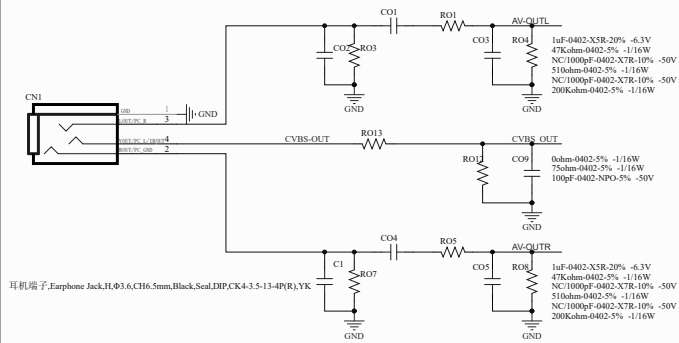
USB电路

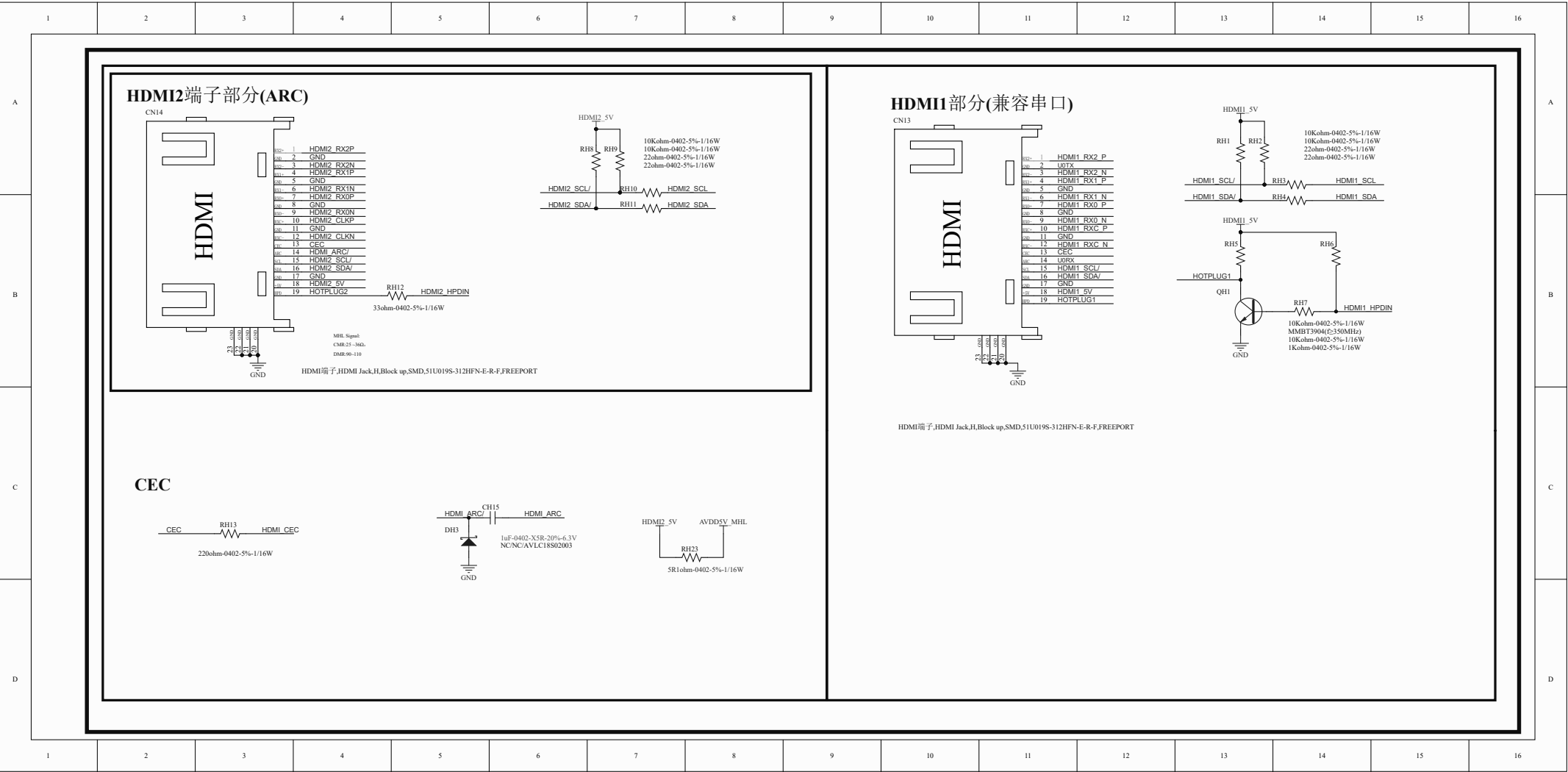


AV1输入电路



AVOUT电路





1

2

3

4

5

6

7

8

9

10

11

12

13

14

15

16

A

B

C

D

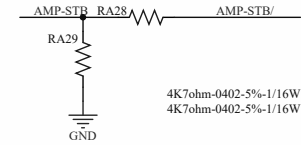
A

B

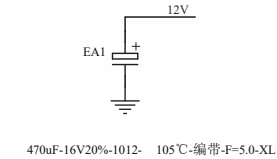
C

D

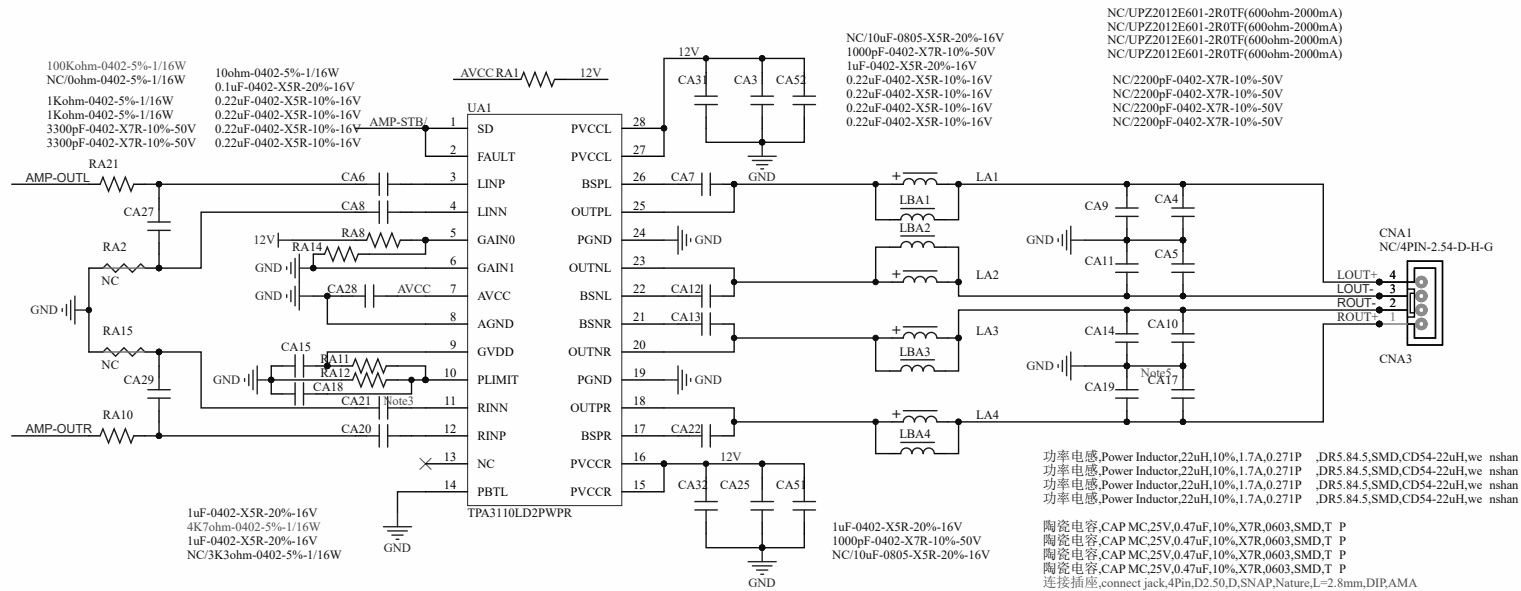
静音控制电路



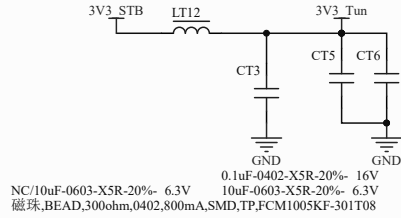
供电电路



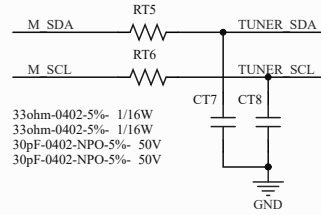
功放电路



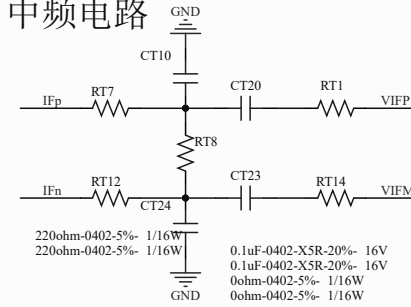
供电部分



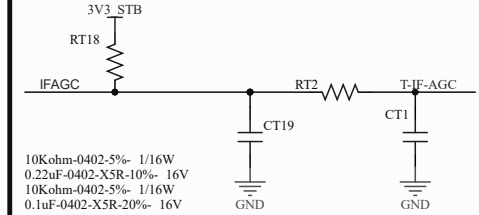
I2C电路



中频电路

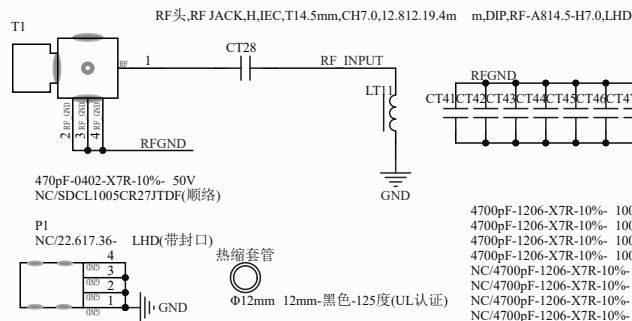


AGC电路



R842电路

RF输入电路



硅高频头,IC Si Tuner,QFN24,SMD,R842,Rafael

