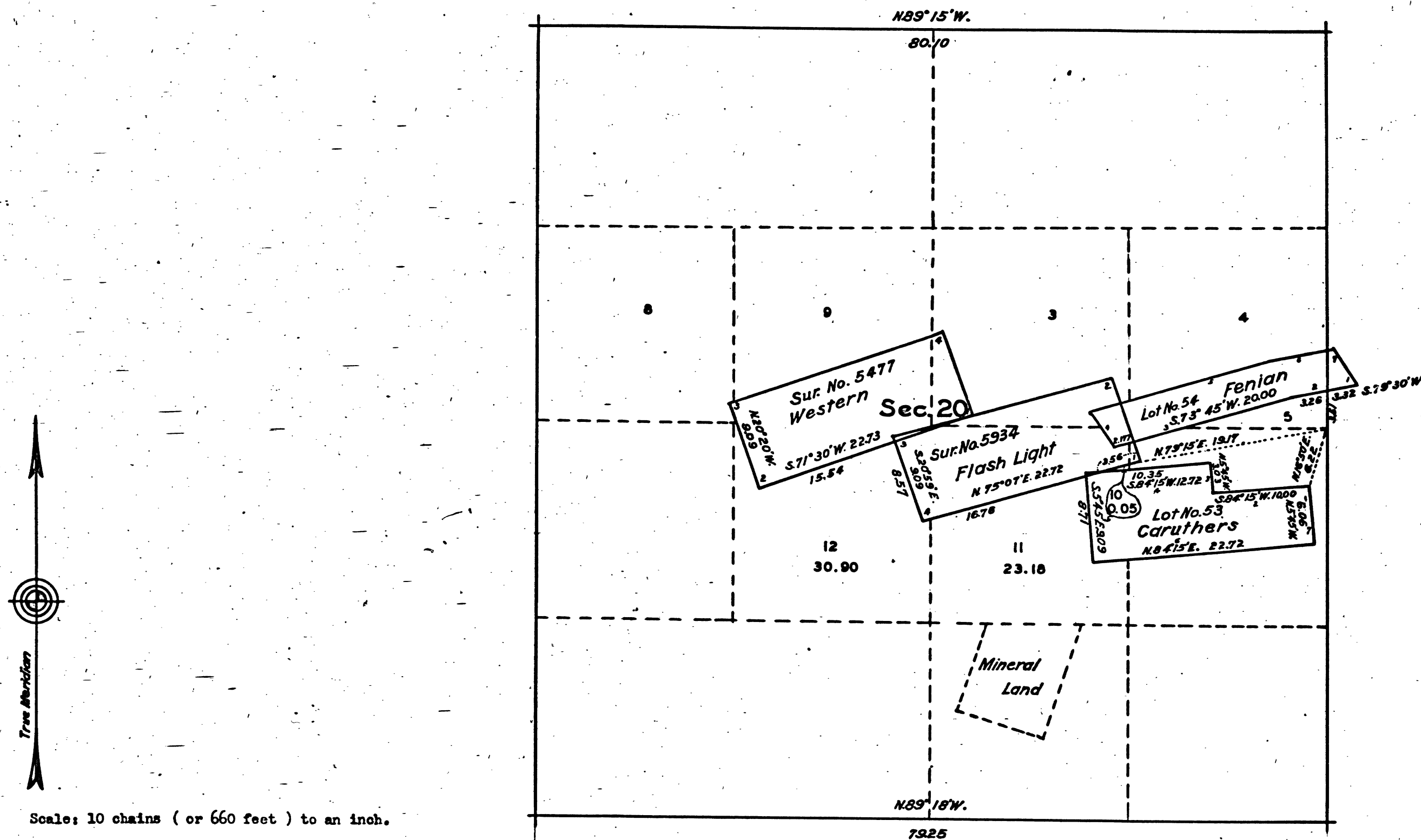


TOWNSHIP N° 4 NORTH , RANGE N° 14 EAST , MOUNT DIABLO MERIDIAN , CALIFORNIA .
SUPPLEMENTAL PLAT OF SECTION 20.



Scale: 10 chains (or 660 feet) to an inch.

PUBLIC SURVEY OFFICE
Glendale, California, March 1, 1939.

The above supplemental plat of section 20, Township No. 4 North, Range No. 14 East, of the Mount Diablo Meridian, California, based upon the plats approved April 18, 1976, April 26, 1902 and April 30, 1921, eliminating Lot No. 56, the Alta No. 3 quartz mine, and showing lottings of fractional areas created by the segregation of the Flash Light lode mining claim, of mineral survey No. 5934, and the Western lode mining claim, of mineral survey No. 5477, to accommodate stockraising homestead entry Sacramento 025590, prepared in accordance with instructions contained in the Commissioner's letter "N" dated February 6, 1939, is hereby approved.

Orig. CBT.

Office Cadastral Engineer.

UNITED STATES
DEPARTMENT OF THE INTERIOR
GENERAL LAND OFFICE
Washington, D. C., June 13, 1939.

The amended lottings represented by this supplemental plat having been correctly made in accordance with the regulations of this office, the plat is hereby accepted.

Acting Assistant Commissioner.

41 351

T 4 N R 14 E M D

BLM 197