

PANDA EXPRESS, INC.
1683 WALNUT GROVE AVE.
ROSEMAD, CALIFORNIA 91770
TELEPHONE: 626.799.9898
FACSIMILE: 626.372.8268

All ideas, designs, arrangement and plans indicated or represented by this drawing are the property of Panda Express Inc. and were created for use on this specific project. None of these ideas, designs, arrangements or plans may be used by or disclosed to any person, firm, or corporation without the written permission of Panda Express Inc.

REVISIONS:

ISSUE DATE:

ISSUE FOR PERMIT 04-07-22
ISSUE FOR BID 04-25-22

DRAWN BY: KBS

PANDA PROJECT #D8689
PANDA STORE #:
ARCH PROJECT #:



UTILITY DETAILS I

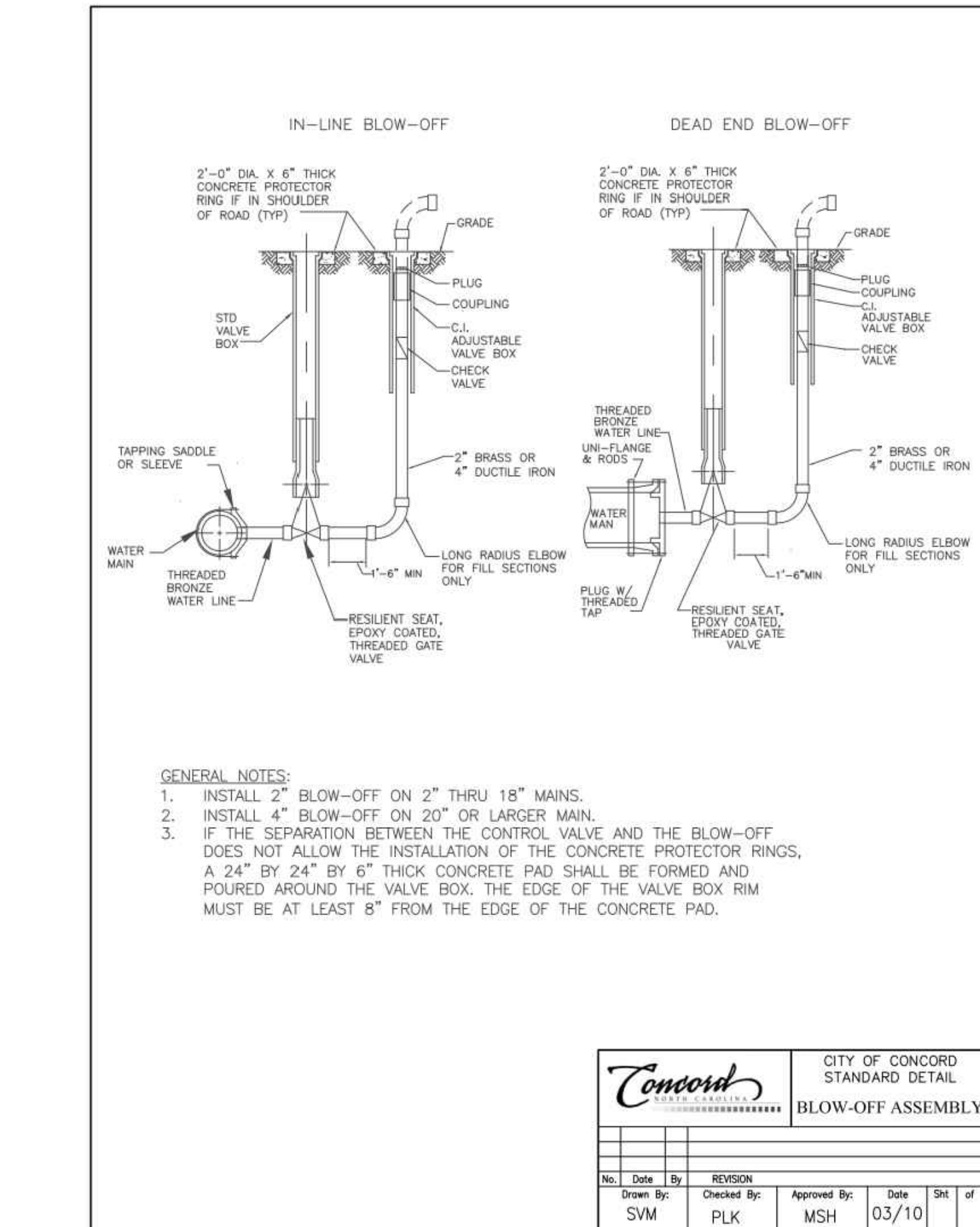
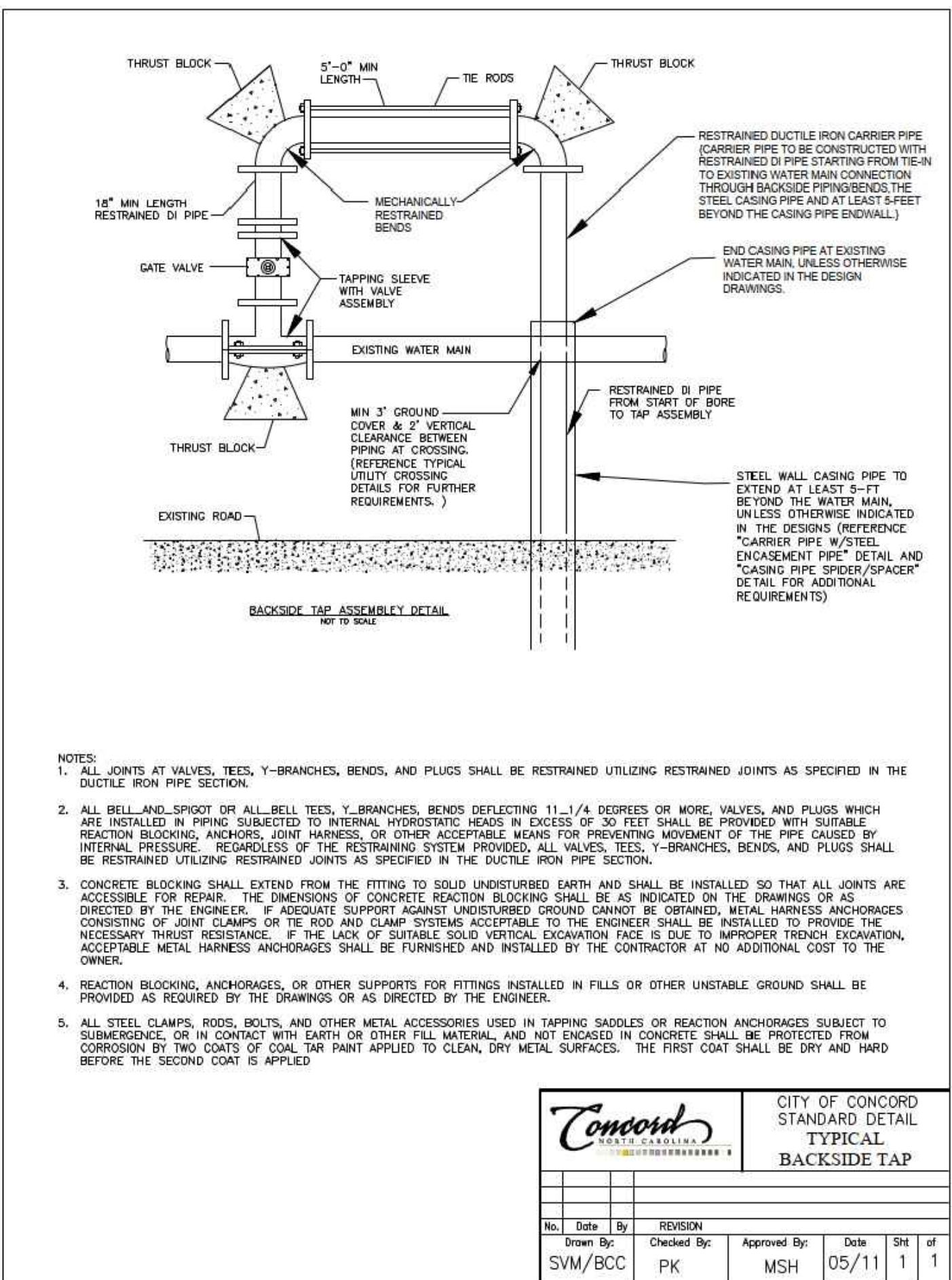
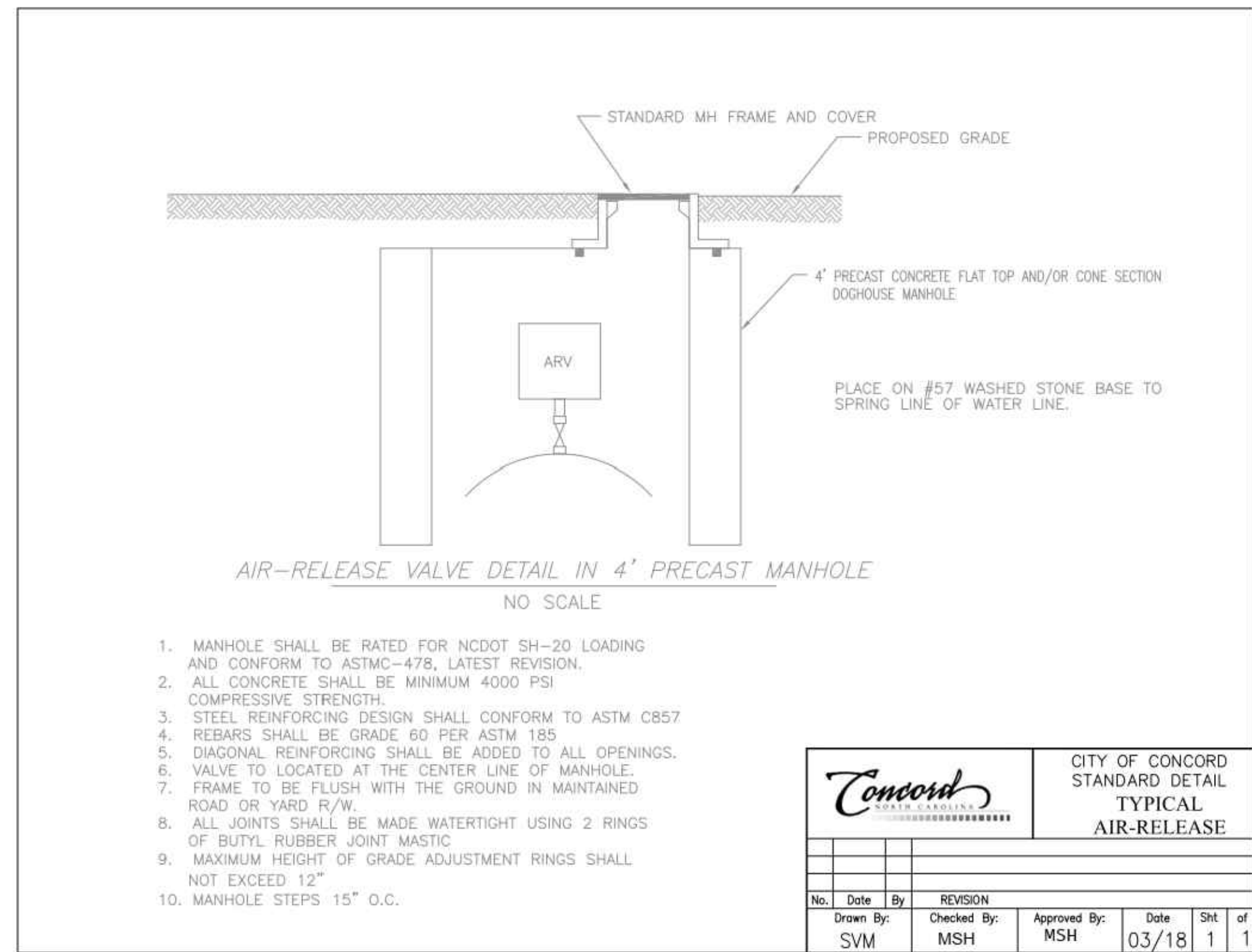
C04.1

1 BUTTERFLY VALVE INSTALLATION NTS

CITY OF CONCORD TECHNICAL STANDARDS MANUAL

2 COMMERCIAL WATER METERS NTS

CITY OF CONCORD TECHNICAL STANDARDS MANUAL



3 AIR RELEASE NTS

CITY OF CONCORD TECHNICAL STANDARDS MANUAL

4 BACKSIDE TAP NTS

CITY OF CONCORD TECHNICAL STANDARDS MANUAL

5 BLOW-OFF ASSEMBLY NTS

CITY OF CONCORD TECHNICAL STANDARDS MANUAL