

# CORNER RECORD

BK 152 PG 25

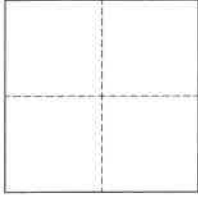
City of Oakland

Agency Index \_\_\_\_\_

Document Number CR 16495County of Alameda, CaliforniaBrief Legal Description Monument near 4604 Rising Hill Court

## CORNER TYPE

## COORDINATES (Optional)



- ☐ Government Corner ☒ Control  
☐ Meander ☐ Property  
☐ Rancho ☐ Other

Date of Survey January 23, 2023

N. \_\_\_\_\_ E. \_\_\_\_\_

Elevation \_\_\_\_\_

Units ☐ Metric ☐ U.S. Survey Foot

Horizontal Datum \_\_\_\_\_

Zone \_\_\_\_\_ Epoch Date \_\_\_\_\_

Vertical Datum \_\_\_\_\_

☐ Complies with Public Resources Code §§8801-8819☐ Complies with Public Resources Code §§8890-8902

PLS Act Ref.:

☐ 8765(d)☒ 8771☐ 8773☐ Other:Corner/  
Monument:☒ Left as found☐ Established☐ Rebuilt☒ Pre-Construction☐ Found and tagged☐ Reestablished☒ Referenced☐ Post-Construction

Narrative of corner identified and monument as found, set, reset, replaced, or removed:

☒ See sheet #2 for description(s):

This Corner Record is being filed to reference the position of an existing monument, prior to a sanitary sewer rehabilitation project. This document is for preservation purposes only, and no attempt was made to determine the relationship to property, centerline, or right-of-way lines.

## SURVEYOR'S STATEMENT

This Corner Record was prepared by me or under my direction in conformance with

the Professional Land Surveyors' Act on March 9, 2023Signed P.L.S. or R.C.E. No. 8040

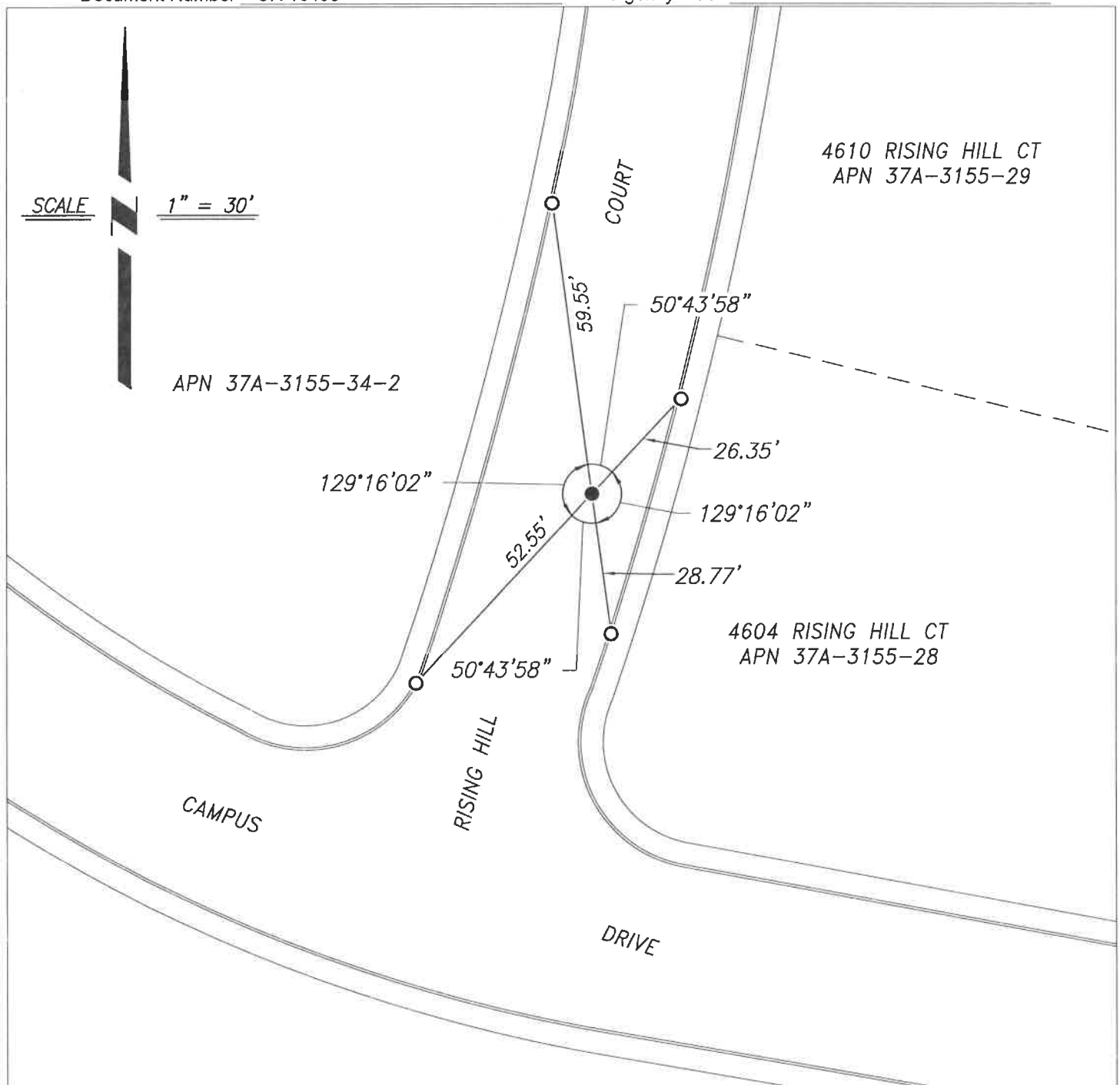
## COUNTY SURVEYOR'S STATEMENT

This Corner Record was received \_\_\_\_\_

and examined and filed MAR 31 2023Signed P.L.S. or R.C.E. No. 7010Title ALAMEDA COUNTY SURVEYOR

County Surveyor's Comment \_\_\_\_\_





### REFERENCE

(A) TRACT 3393 IN THE CITY OF OAKLAND, FILED ON OCTOBER 29, 1981, IN BOOK 130 OF TRACT MAPS, AT PAGES 33-52, ALAMEDA COUNTY RECORDS.

### LEGEND

- FOUND MONUMENT, 3" BRASS DISK, WITH PUNCH, STAMPED "RE 9788", IN MONUMENT WELL
- CUT CROSS IN CONCRETE AS REFERENCE POINT

### NOTES

1. ALL REFERENCES ARE ALAMEDA COUNTY RECORDS